

# U.S. PUBLIC LAND SURVEY MONUMENT RECORD

(Prepared and as required by S. A-E 7.08 WI Administrative Code)

The South 1/4 of Section 27, T.32 N., R.9 E, Langlade County, WI

Corner was: (check all that apply)

- Restored through acceptance of an obliterated evidence location
- Restored through acceptance of a found perpetuated location.
- Determined to be lost and re-established through proportionate methods.  
(Show bearings and distance to PLSS corners used for proportioning.)
- Restored/recovered in a location that differs from a previously established position.  
(Show difference in plan view below.)
- Check here if additional information is shown on the reverse side of this form.

43209270020

Describe record evidence, recovered physical evidence, occupational evidence, testimonial evidence and all other evidence considered in the recovery/restoration of the corner.

September, 1860- Corner originally established by HC Fellows. BTs- Fir 9" N06°E 14 links Hemlock 8" S85°E 14 links

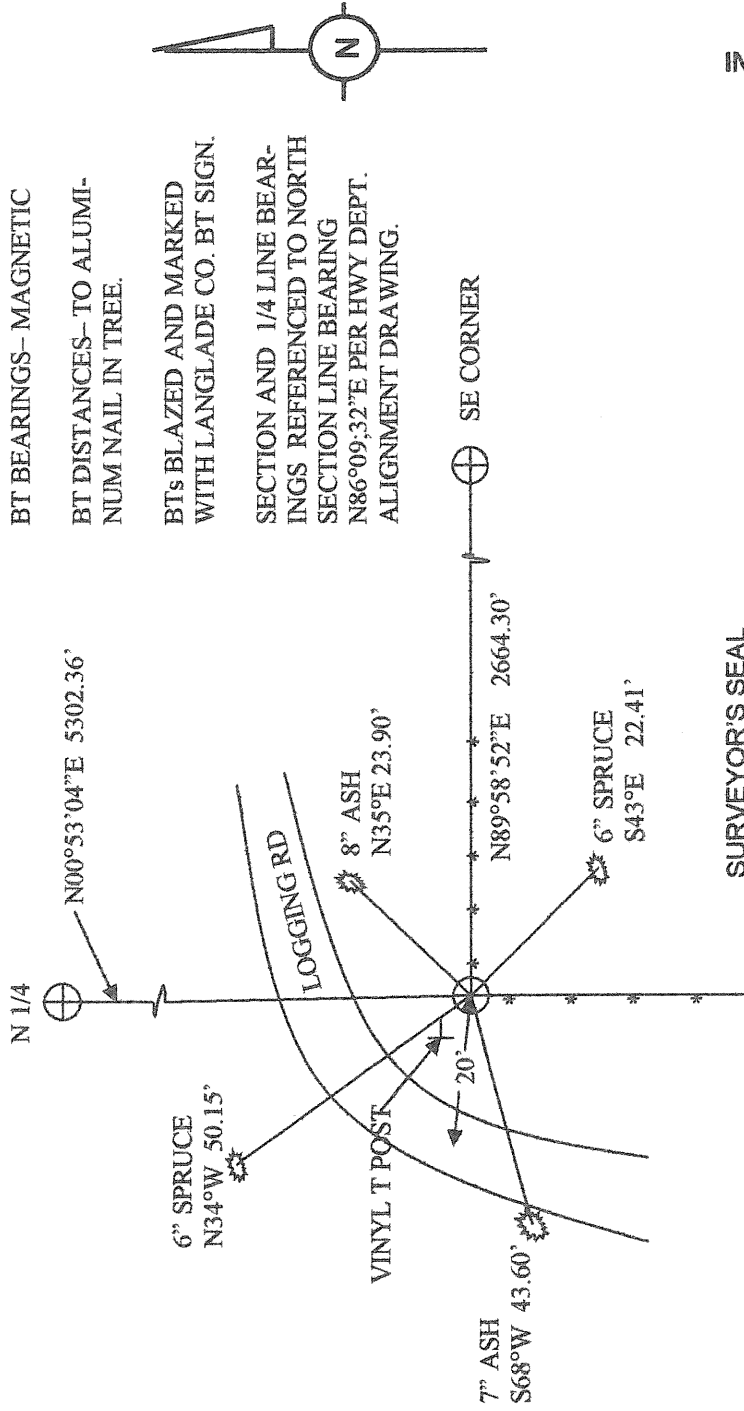
January, 1980- WF Kelly referred to this corner in reestablishing the Northeast corner of section 32 (1.5 miles West) by proportioning. He did not indicate the type of evidence found.

April, 2005- I found a fence corner with fences running East and South. I determined the fence corner and location of adjacent logging road, to be the best evidence of the corner location.

Physical description of the monument set:

1" X 60" iron pipe with a Langlade county aluminum cap.

Describe the accessories used to perpetuate the location of the corner. Include a plan view drawing and indicate accessories found/set. Describe measuring point on bearing trees. Show any topographic features that would aid in future recovery of the corner.

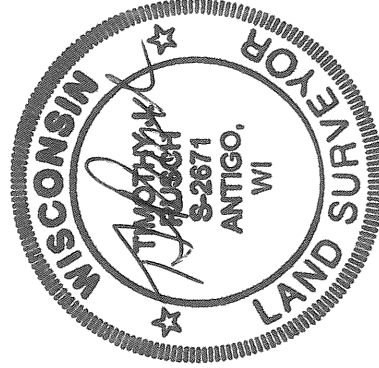


SURVEYOR'S SEAL

INDEX NO. V-15 32-9

The South 1/4 of Section 27

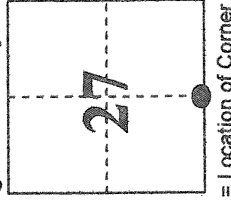
T.32N., R.9E. Langlade County, WI



I, TIMOTHY J RUSCH, certify that the Corner location shown on this record was determined By me or under my direction and control and that this U.S. Public Land Survey Monument Record is correct And complete to the best of my knowledge and belief.

*Timothy J Rusch*  
Signature

6-29-2005  
Date



● = Location of Corner