

43209260020

U.S. PUBLIC LAND SURVEY MONUMENT RECORD

(Prepared and as required by S. A-E 7.08 WI Administrative Code)

The South 1/4 corner of Section 26, T. 32 N., R. 9 E., Langlade County, WI
 Corner was (check all that apply)

- Restored through acceptance of an obliterated evidence location.
- Restored through acceptance of a found perpetuated location.
- Determined to be lost and re-established through proportionate methods. (show bearings and distances to PLSS corners used for proportioning.)
- Restored/recovered/re-established in a location that differs from a previously established position. (Show difference in plan view below.)
- Check here if additional information is shown on the reverse side of this form.

Describe record evidence, recovered physical evidence, occupational evidence, testimonial evidence, and all other evidence considered in the recovery/restoration of the corner.

Sept. 1860 - Corner was set in original survey of township. Bearing trees, 7" Fir N7°E, 13 links, 10" Hemlock S4°W, 16 links.

1915- Surveyor Hutchinson surveyed Section 26 and found "1/4 post stone set by previous surveyor". Hutchinson made a new BT: 14" Spruce, S 67 1/2 W, 82 links

1990'S County Surveyor Tlusty dug for the corner stone, but did not find it.

2007 I found the game farm fence which is midpoint between the SE and SW section corners. I did not find evidence of any old BTs or corner monument. I believe the fenceline and Hayes road to be the best evidence or the original corner location.

Physical description of the monument set:

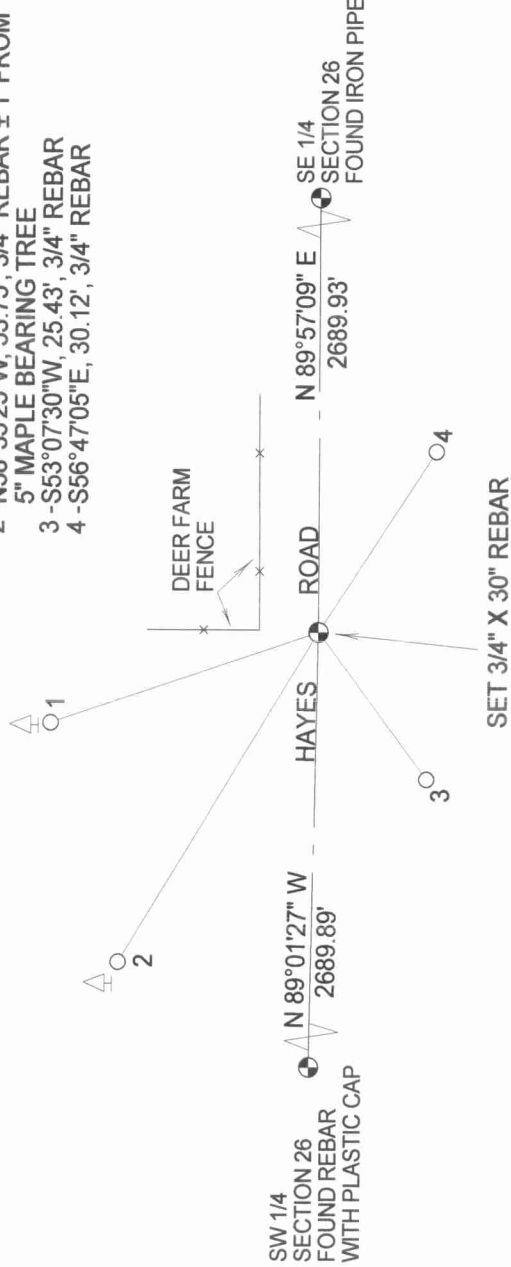
At the intersection of the N-S fenceline and the center of Hayes Road, I set a 3/4" x 30" rebar 10" below the gravel road surface, and tied it out as follows:

Describe the accessories used to perpetuate the location of the corner. Include a plan view drawing and indicate accessories found/set. Describe measuring point on bearing trees. Show any topographic features that would aid in future recovery of the corner.

*All Bearing Trees with aluminum signs, no blazes.

- 1 - N18°34'24"W, 39.69', 3/4" REBAR ± 1' FROM 6" RED OAK BEARING TREE
- 2 - N58°35'25"W, 53.75', 3/4" REBAR ± 1' FROM 5" MAPLE BEARING TREE
- 3 - S53°07'30"W, 25.43', 3/4" REBAR
- 4 - S56°47'05"E, 30.12', 3/4" REBAR

BEARINGS REFERENCED TO THE LANGLADE COUNTY COORDINATE SYSTEM GRID.



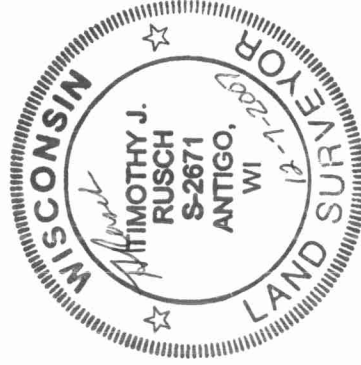
SW 1/4 SECTION 26 FOUND REBAR WITH PLASTIC CAP N 89°01'27" W 2689.89'

SE 1/4 SECTION 26 FOUND IRON PIPE N 89°57'09" E 2689.93'

SET 3/4" X 30" REBAR

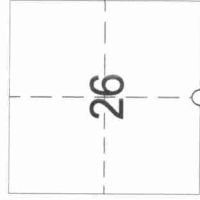
The SOUTH 1/4 Corner of Section 26
 T. 32 N., R. 9 E. Langlade County, WI

SURVEYORS SEAL



I, Timothy J. Rusch, certify that the corner location shown on this record was determined by me or under my direction and control and that this U.S. Public Land Survey Monument Record is correct and complete to the best of my knowledge and belief.

Timothy J. Rusch
 Signature _____ Date _____



○ = Location of corner