

# LANGLADE COUNTY U.S. PUBLIC LAND CORNER RESTORATION

The Southeast corner of Section 25, T. 32 N., R. 09 E., Langlade County, WI.

**Corner was: (check all that apply)**

3209250000

- Restored through acceptance of an obliterated evidence location.
- Restored through acceptance of a found perpetuated location.
- Determined to be lost and re-established through proportionate methods.
- Show bearings and distances to PLSS corners used for proportioning, and show original distances).
- Restored/recovered/re-established in a location that differs from a previously established position.
- (Show difference in plan view below).
- Check here if additional information is shown on the reverse side of this form.

**Describe record evidence, recovered physical evidence, occupational evidence, testimonial evidence and all other evidence considered in the recovery/restoration of the corner.**

The original corner was established in 1859 by Hiram C. Fellows. Original bearing trees: hemlock, 10", S52°W, 25 links; hemlock, 10", N41°W, 85 links; lind, 8", N88°E, 20 links and a birch, 20" S65°E, 30 links.

In 1895, Dorr described this corner as a granite boulder, 4" x 5" x 24" with + on top.  
 In 1988, former surveyor Kelly "located a 1" iron pipe buried below grade from information in Hutchinsons notes. Set a R.R. spike over pipe". 07/05/00 Dave Tlusty, Mike Kielcheski found 3/4" pipe with 1 1/2" dia. top.  
 Dug with backhoe. At 1.5' deep and approx. 3' north of the pipe found, we found a granite stone, 4" x 5" square and and upright in old roadbed. Stone has part of chiseled "+" on top, but south part of top is broken off. Accepted stone as the stone described by Dorr and as the best evidence of the original corner location.

**Physical description of the monument set:**

Left existing stone in place and set a 3/4" x 30" rebar on south edge of stone.

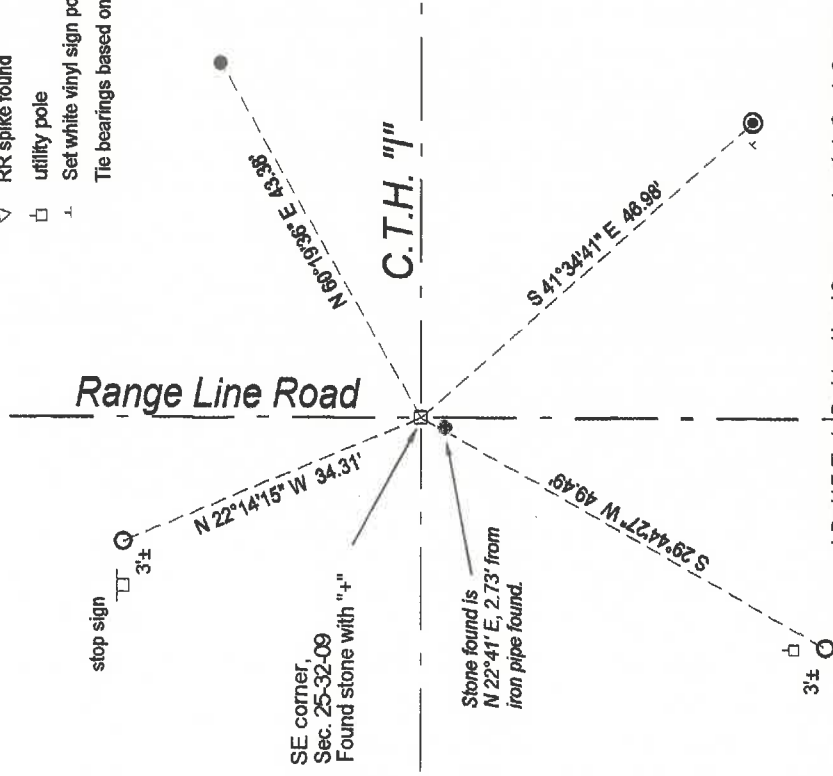
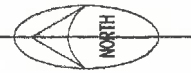
*7/5/11 SET CH SPK FROM NE & SE TIES. REMEASURED OTHERS. SEE OVER →*

**Describe the accessories used to perpetuate the corner. Include a plan view drawing and accessories found/set. Describe measuring point on bearing trees. Show any topographic features that would aid in future recovery of the corner.**

**LEGEND**

- 3/4" x 30" rebar set
- 1" iron pipe found
- ⊙ 2" aluminum monument found
- ▽ RR spike found
- utility pole
- ⊥ Set white vinyl sign post
- ⊥ Tie bearings based on assumed reference line bearing.

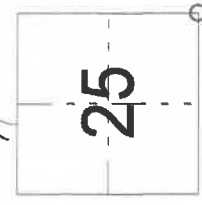
Field book: FB18-29



Tie bearings based on assumed reference line bearing.



Index No.                      V25 32-09



○ = corner perpetuated  
 The Southeast corner of Section 25, T. 32 N., R. 09 E., Langlade County, WI

I, David E. Tlusty, Registered Land Surveyor, as Langlade County Surveyor, certify that the corner location on this record was determined by me and that this U.S. Public Land Survey Monument Record is correct to the best of my knowledge and belief.

**LANGLADE COUNTY**  
U.S. PUBLIC LAND CORNER RESTORATION

**The Southeast corner of Section 25, T.32N., R.09 E., Langlade  
County, WI**

Corner history:

See front side of this form.

2011      FB7-144    6/30/2011 I found the NW tie rebar frost heaved and bent. I removed it, straightened it and reset it in original hole. I found the SW tie rebar frost heaved, I drove it flush. I found the NE and SE reference monuments in place and undisturbed. Using the NE and SE reference distances, I set a gearheaded spike for the corner and re-measured all references as shown:

N 59°08'17" E	43.38'	to 1"(OD) iron pipe found
S 42°43'23" E	46.98'	to aluminum witness monument found
S 28°37'53" W	49.66'	to rebar frost heaved, now driven flush
N 23°35'58" W	34.34'	to rebar straightened and reset in same hole

These bearings are Langlade County Coordinate System grid bearings.

LCCS coordinates NAD83(91)

N 368794.119    E 581225.350    sec cor ghsbk set from ties

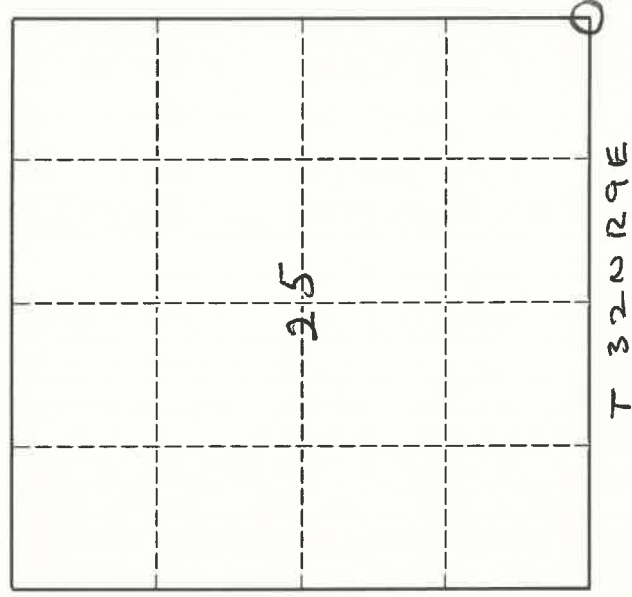


# U. S. PUBLIC LAND SURVEY MONUMENT RECORD

**INSTRUCTIONS:**

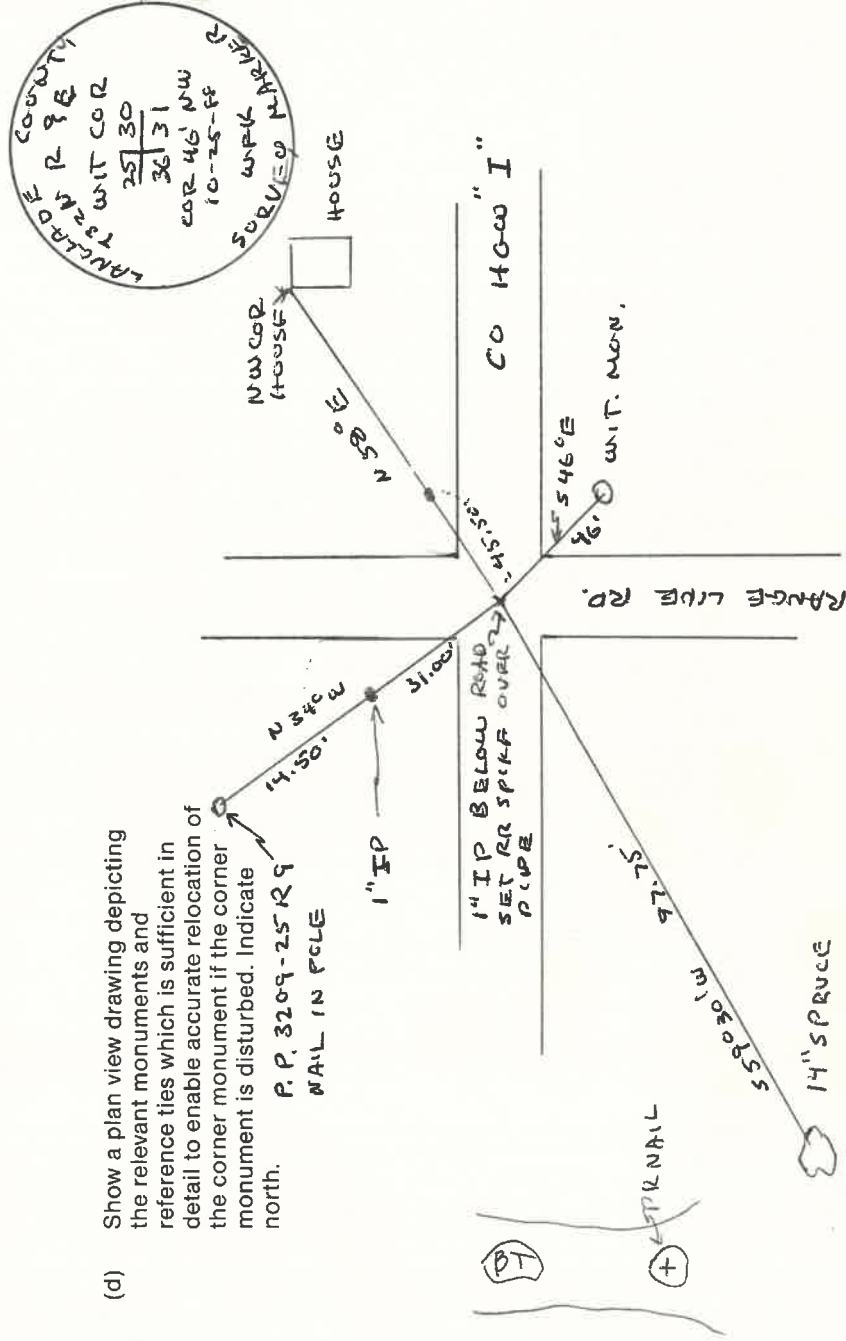
This record shall show the location of the corner and shall include all of the following nine elements (a through i).

- (a) Identify the corner by reference to the U.S. public land survey system.  
 O = Corner monument restored.  
**ORIGINAL CORNER ESTABLISHED BY H.C. FELLOWS IN JUNE 1859.**  
**CORNER PERPETUATED BY MALCOLM HUTCHINSON IN 1920'S**



- (b) Describe any record evidence, monument evidence, occupational evidence, testimonial evidence or any other material evidence you considered, and whether the monument was found or placed.  
**LOCATED A 1" IRON PIPE BURIED BELOW GRADE FROM INFORMATION IN HUTCHINSON'S NOTES.**  
**SET A R.R. SPIKE OVER PIPE.**

- (c) In the plan view drawing below, provide reference ties to at least 4 witness monuments, or, if the location is within a municipality, to at least 2 witness monuments. (Witness monuments shall be made of concrete, natural stone, iron or other equally durable material.)  
 Describe witness monuments.



Describe any material discrepancy between the location of the corner as restored or reestablished and the location of that corner as previously restored or reestablished by distance and direction. Show the discrepancy on the plan view drawing under (d), above. Show the distances between the corner as previously restored or reestablished and (1) the corner as restored or reestablished, and (2) to at least 2 of the witness monuments shown on the drawing in (d), above.

NONE

(f) Was the corner restored through acceptance of (1) an obliterated evidence location, or, (2) a found perpetuated location.?

(2)

(g & h) Was the corner reestablished through lost corner proportionate methods? If so, show the method, including the directions and distances to other public land survey corners used as evidence or used for proportioning in determining the corner location.

no.

(i) I, WILLIAM F. KELLY  
(type or print name)

certify that the corner location shown on this record was determined by me or under my direction and control and that this U.S. Public Land Survey Monument Record is correct and complete to the best of my knowledge and belief.

William F. Kelly

Signature

11-19-88

Date

