

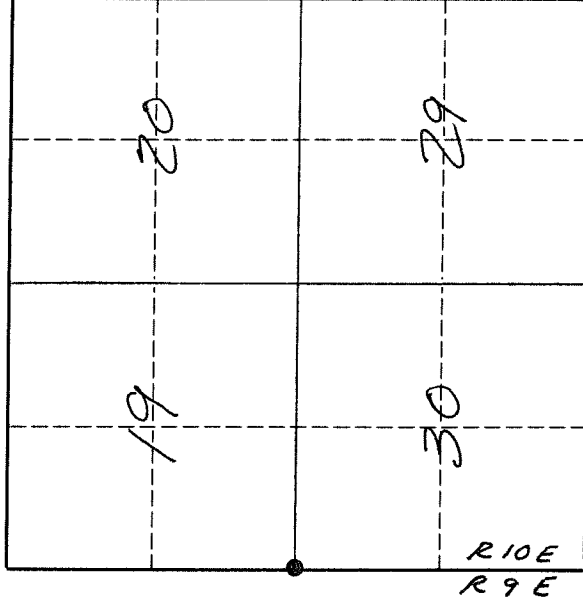
U. S. PUBLIC LAND SURVEY MONUMENT RECORD

I N S T R U C T I O N S:

This record shall show the location of the corner and shall include all of the following nine elements (a through i).

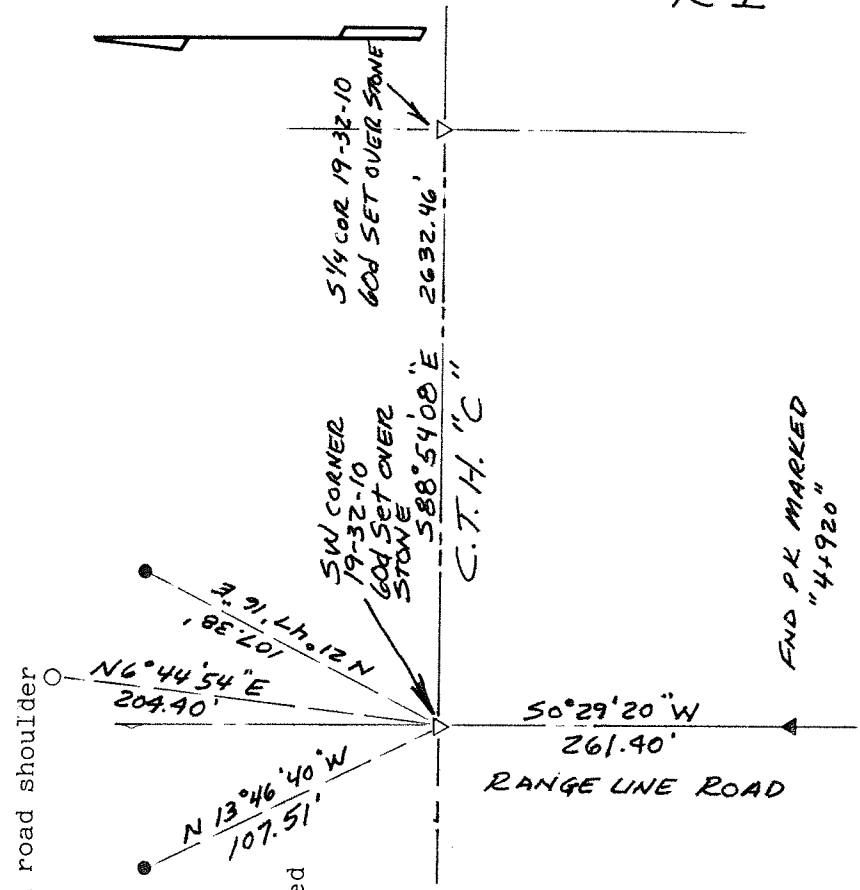
- (a) Identify the corner by reference to the U.S. public land survey system.
 ● = Corner monument restored.

The Southwest corner of Section 19, Township 32 North, Range 10 East, Langlade County, Wisconsin.



T. 32 N., R. 10 E.

- (b) Describe any record evidence, monument evidence, occupational evidence, testimonial evidence or any other material evidence you considered, and whether the monument was found or placed.
 The original corner was established in 1859 by Hiram C. Fellows. Original BT's: Ash, 12", S55°W, 5 lks; Ash, 15", N07°E, 19 lks; Maple, 12", N64°W, 4 lks., and an Ash, 12", S79°E, 12 lks. In 1981, former surveyor Kelly "Set RR spike in pavement over PK marker set by Wis. Public Service survey for transmission line." In June, 1994, I spoke with Mr. Bill Kidd of WPS. He said that all the survey work they did in this area was for a preliminary study of a transmission line running north from the Black Brook substation. He also said that no corners were set and that all the points they set were just traverse points. On June 15, 1994, I dug in the road and at 43" below the road surface, I found a stone (approx. 4" x 4") for the corner. The stone is marked by a very old steel fence post, top of which was at 20" below the road. As the road is to be re-built in the near future, I set a 60d spike in the road patch for a temporary marker.
- (c) In the plan view drawing below, provide reference ties to at least 4 witness monuments, or, if the location is within a municipality, to at least 2 witness monuments. (Witness monuments shall be made of concrete, natural stone, iron or other equally durable material).
 Describe witness monuments.
 ● = 3/4" iron pipe found
 ○ = 3/4" x 30" re-bar set in road shoulder
 FB 4-102
- (d) Show a plan view drawing depicting the relevant monuments and reference ties which is sufficient in detail to enable accurate relocation of the corner monument if the corner monument is disturbed. Indicate north.
 Bearings assumed and referenced to section line shown.



Describe any material discrepancy between the location of the corner as restored or reestablished and the location of that corner as previously restored or reestablished by distance and direction. Show the discrepancy on the plan view drawing under (d), above. Show the distances between the corner as previously restored or reestablished and (1) the corner as restored or reestablished, and (2) to at least 2 of the witness monuments shown on the drawing in (d), above.

Stone found is 1.50 feet SW of the corner marked by Kelly.

(f) Was the corner restored through acceptance of (1) an obliterated evidence location, or, (2) a found perpetuated location?
A found perpetuated location.

(g & h) Was the corner reestablished through lost corner proportionate methods? If so, show the method, including the directions and distances to other public land survey corners used as evidence or used for proportioning in determining the corner location.

(i) I, David E. Tlusty, Langlade County Surveyor,
(type or print name)

certify that the corner location shown on this record was determined by me or under my direction and control and that this U.S. Public Land Survey Monument Record is correct and complete to the best of my knowledge and belief.

David E. Tlusty June 16, 1994
Signature Date

