

CERTIFIED LAND CORNER RESTORATION

Index No. R-25

4310924 0000 1981

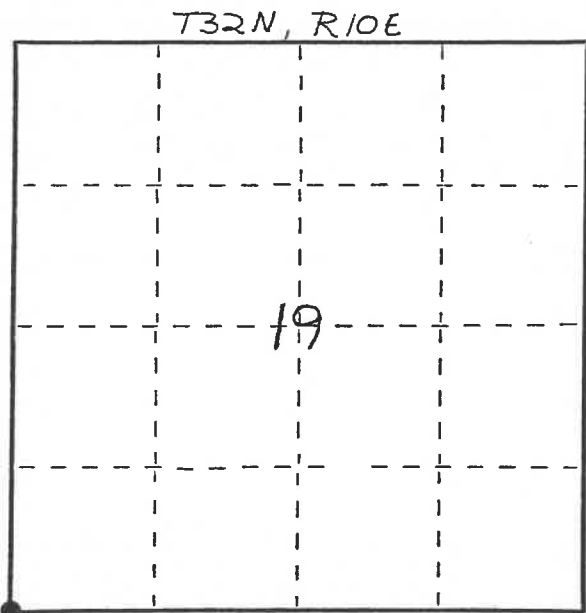
State of Wisconsin }
County of LANGLADE } ss.

I WILLIAM F. KELLY, do hereby certify that on the 5th day of Nov., 1981, I found evidence of the SW corner of SEC. 19 Township 32, North, Range 10 EAST, Fourth Principal Meridian, as described hereon; and that from this evidence I established a new monument and accessories as described hereon to perpetuate the original location of this corner.

Resident witnesses:

.....
.....
.....

FORM 985 H. C. MILLER CO., MILWAUKEE

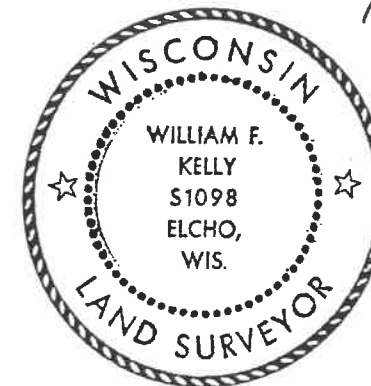


○ = Corner monument restored.

History of original corner establishment:
ORIGINAL CORNER ESTABLISHED BY
MIRAM C. FELOWS IN SEPT., 1860

Description of corner evidence found:

SET R.R. SPIKE IN PAVEMENT
OVER P.K. MARKER SET
BY WIS. PUBLIC SERVICE
SURVEY FOR TRANSMISSION
LINE

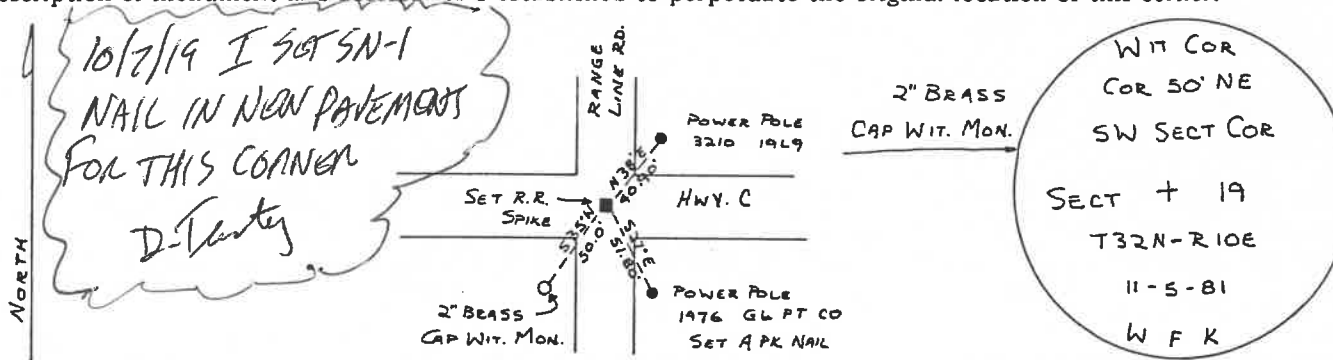


T32N-R9E

William F. Kelly

SET A 2" x 42" BLACK IRON PIPE WITH BRASS CAP WIT. MONUMENT

Description of monument and accessories I established to perpetuate the original location of this corner.



Dated at ELCHO, Wis., this 5th day of Nov., 1981

Signature William F. Kelly Title COUNTY SURVEYOR Registration No. 1098
(County Surveyor, Registered Land Surveyor, or other duly authorized official)

Office of Register of Deeds, County of....., I hereby certify that the within instrument was filed in this office for record on the..... day of....., 19..... at..... o'clock..... M.

(Register of Deeds)

By..... Deputy