

4320923 2000

# U.S. PUBLIC LAND SURVEY MONUMENT RECORD

(Prepared and as required by S. A-E 7.08 WI Administrative Code)

The EAST 1/4 corner of Section 23, T. 32 N., R. 9 E., Langlade County, WI  
Corner was (check all that apply)

- Restored through acceptance of an obliterated evidence location.
- Restored through acceptance of a found perpetuated location.
- Determined to be lost and re-established through proportionate methods. (show bearings and distances to PLSS corners used for proportioning.)
- Restored/recovered/re-established in a location that differs from a previously established position. (Show difference in plan view below.)
- Check here if additional information is shown on the reverse side of this form.

### Describe record evidence, recovered physical evidence, occupational evidence, testimonial evidence, and all other evidence considered in the recovery/restoration of the corner.

1860 - Original corner established by H.C. Fellows - bearing trees: Birch, 10", S01°E, 34 links and a Sugar, 12", N43°W, 16 links.

2006 - T. Rusch "found a fence corner and an old fence line running east, as well as woods vs. field occupation evidence, determined the best evidence of the corner location to be the intersection of the centerline of Highway H and the extension of the fence/field line." Rusch set a gear headed spike and filed a tie sheet.

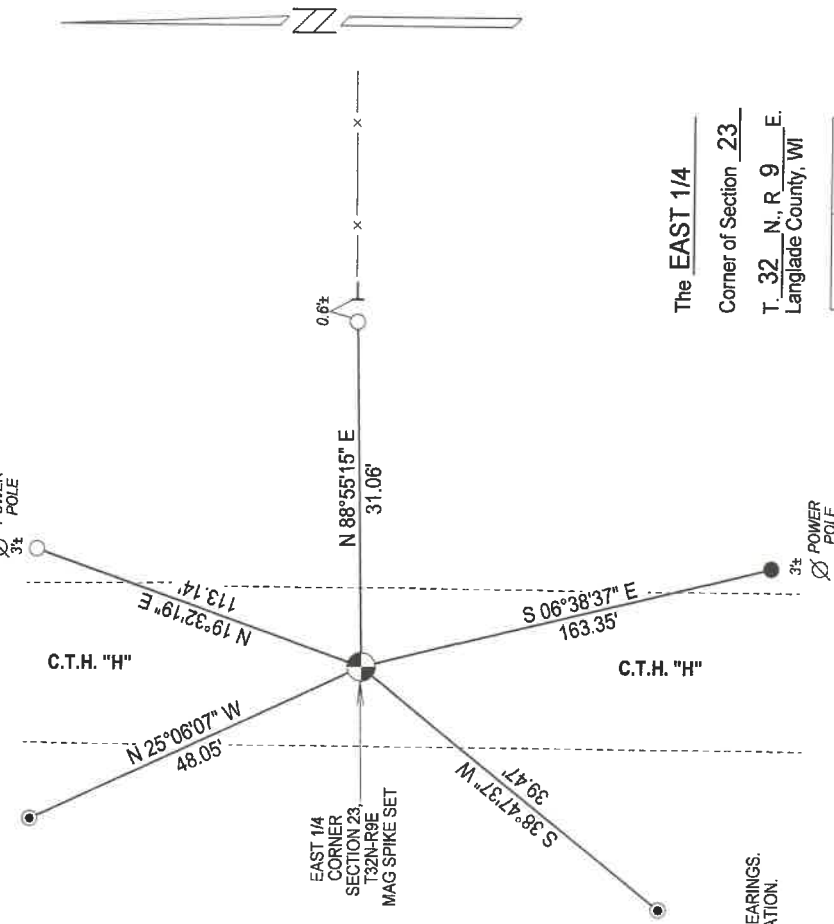
2022 - Prior to road construction in the Summer of 2022, I found the gear headed spike set by Rusch, verified corner location from existing ties. After completion of roadwork, I set a mag spike in new pavement and retied as shown below.

### Physical description of the monument set:

I set a mag spike at the corner location and tied it out as shown below.

Describe the accessories used to perpetuate the location of the corner. Include a plan view drawing and indicate accessories found/set. Describe measuring point on bearing trees. Show any topographic features that would aid in future recovery of the corner.

EAST 1/4 CORNER  
SECTION 23,  
T32N-R9E  
MAG SPIKE SET  
N: 377086.70  
E: 575856.51  
LANGLADE COUNTY COORDINATES  
NAD 83 (2011)

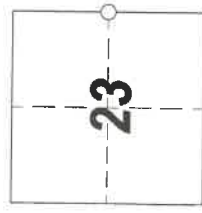


### LEGEND

- MAG SPIKE SET
- FOUND 3/4" IRON ROD
- FOUND 1" IRON PIPE
- SET 3/4" X 30" REBAR
- WHITE VINYL T-POST WITH SURVEY MARKER SIGN FOUND

NOTES  
 - SKETCH NOT DRAWN TO SCALE.  
 - TIE BEARINGS SHOWN ARE LANGLADE COUNTY GRID BEARINGS.  
 - ALL TIES MEASURED ELECTRONICALLY WITH TOTAL STATION.

The EAST 1/4  
 Corner of Section 23  
 T. 32 N., R. 9 E.  
 Langlade County, WI



○ = Location of corner



I, Michael J. Hoffman certify that the corner location shown on this record was determined by me or under my direction and control and that this U.S. Public Land Survey Monument Record is correct and complete to the best of my knowledge and belief.

Michael Hoffman 12/12/2022  
 Signature Date

# U.S. PUBLIC LAND SURVEY MONUMENT RECORD

(Prepared and as required by S. A-E 7.08 WI Administrative Code)

43209 23 2000

The EAST 1/4 corner of Section 23 T. 32 N., R. 9 E., Langlade County, WI  
Corner was (check all that apply)

- Restored through acceptance of an obliterated evidence location.
- Restored through acceptance of a found perpetuated location.
- Determined to be lost and re-established through proportionate methods. (show bearings and distances to PLSS corners used for proportioning.)
- Restored/recovered/re-established in a location that differs from a previously established position. (Show difference in plan view below.)
- Check here if additional information is shown on the reverse side of this form.

**Describe record evidence, recovered physical evidence, occupational evidence, testimonial evidence, and all other evidence considered in the recovery/restoration of the corner.**

Sept 1860 - H.C. Fellows set the East 1/4 corner post. BT's 10" Birch, S1E, 34 links  
12" Sugar, N43W, 16 links

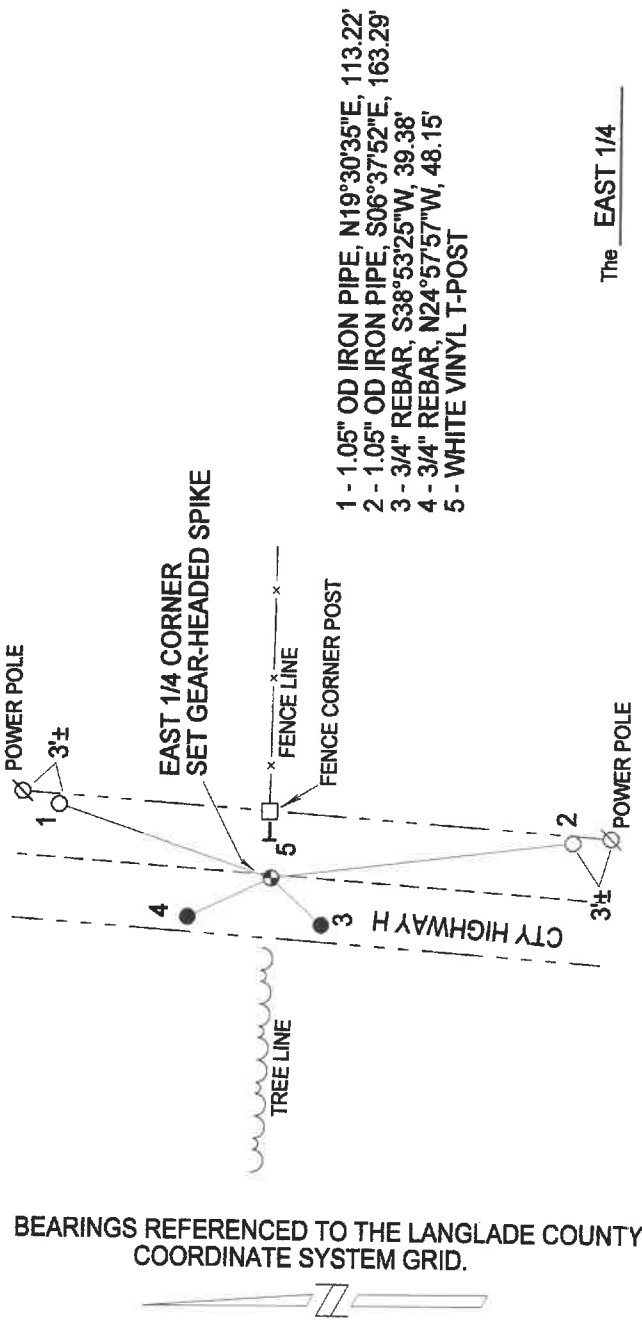
No other notes or maps were found in my research.

Dec 2006 - At the approximate midpoint between the Northeast and Southeast section corners, I found a fence corner and an old fence line running east, as well as woods vs. field occupation evidence. I determined the best evidence of the corner location to be the intersection of the centerline of Highway H and the extension of the fence/field line.

### Physical description of the monument set:

I set a gear-headed spike for the corner and ties as follows -

Describe the accessories used to perpetuate the location of the corner. Include a plan view drawing and indicate accessories found/set. Describe measuring point on bearing trees. Show any topographic features that would aid in future recovery of the corner.



The EAST 1/4

Corner of Section 23

SURVEYORS SEAL

T. 32 N., R. 9 E.  
Langlade County, WI

INDEX No. **P21** 32-9



○ = Location of corner

I, Timothy J. Rusch, certify that the corner location shown on this record was determined by me or under my direction and control and that this U.S. Public Land Survey Monument Record is correct and complete to the best of my knowledge and belief.

Timothy J. Rusch 02-07-2007  
Signature Date

