

U.S. PUBLIC LAND SURVEY MONUMENT RECORD

(Prepared and as required by S. A-E 7.08 WI Administrative Code)

43209230020

The SOUTH 1/4 corner of Section 23, T. 32, N., R. 9 E., Langlade County, WI
Corner was (check all that apply)

- Restored through acceptance of an obliterated evidence location.
- Restored through acceptance of a found perpetuated location.
- Determined to be lost and re-established through proportionate methods. (show bearings and distances to PLSS corners used for proportioning.)
- Restored/recovered/re-established in a location that differs from a previously established position. (Show difference in plan view below.)
- Check here if additional information is shown on the reverse side of this form.

Describe record evidence, recovered physical evidence, occupational evidence, testimonial evidence, and all other evidence considered in the recovery/restoration of the corner.

Sept 1860 - H.C. Fellows set quarter section post: Original BT's - 5" Birch, N31E, 19 links - 7" Fir, S20W, 17 links

1912 - Hutchinson surveyed Section 26 (FB 94-p103) and indicated a "1/4 Post" and "Found stone in Road" at the location

1990 - Wis DOT plans for Highway C reconstruction (proj 9362-04-70) indicate a "cement nail w/ washer found" at this location and indicate bearing and distance to PLS corners East and West. The plans included a "DO NOT DISTURB PRIOR TO REFERENCE BY OTHERS" But apparently this corner as well as the section corner to the East were removed by construction without being tied out.

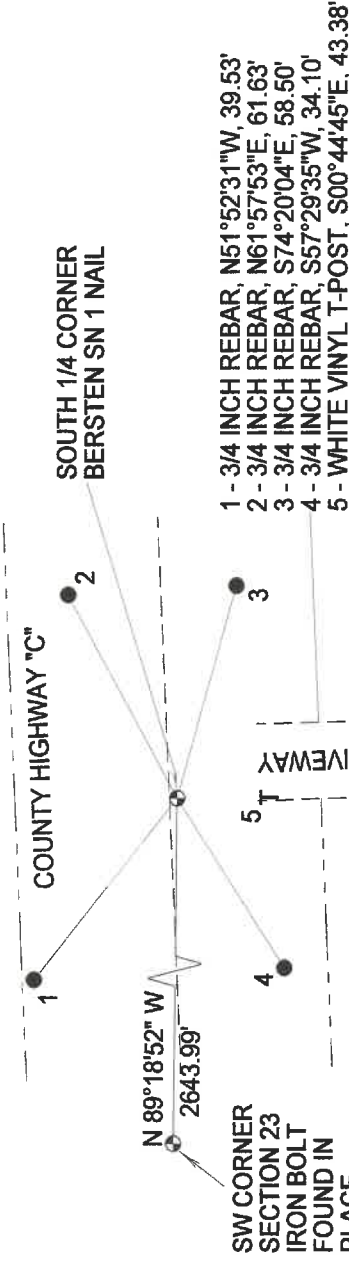
Dec. 2006 - I reset corner at the indicated bearing and distance from the SW Section corner from the DOT plans. This location matches well with occupational evidence of a field road to the South and an old down fence to the North.

Physical description of the monument set:

I set a Bemtisen SN-1 nail in the roadway, and tied as follows-

Describe the accessories used to perpetuate the location of the corner. Include a plan view drawing and indicate accessories found/set. Describe measuring point on bearing trees. Show any topographic features that would aid in future recovery of the corner.

BEARINGS REFERENCED TO THE LANGLADE COUNTY COORDINATE SYSTEM GRID.



- 1 - 3/4 INCH REBAR, N51°52'31"W, 39.53'
- 2 - 3/4 INCH REBAR, N61°57'53"E, 61.63'
- 3 - 3/4 INCH REBAR, S74°20'04"E, 58.50'
- 4 - 3/4 INCH REBAR, S57°29'35"W, 34.10'
- 5 - WHITE VINYL T-POST, S00°44'45"E, 43.38'

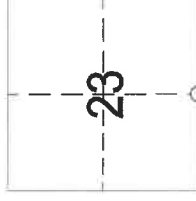
The SOUTH 1/4

Corner of Section 23

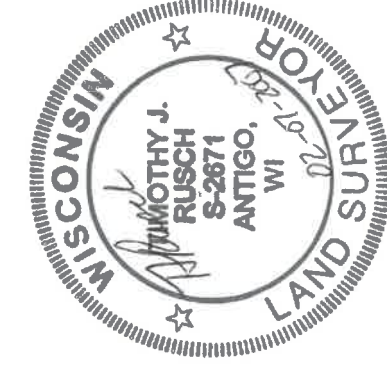
T. 32 N., R. 9 E.
Langlade County, WI

SURVEYORS SEAL

INDEX No. R19 32-9



○ = Location of corner



I, Timothy J. Rusch, certify that the corner location shown on this record was determined by me or under my direction and control and that this U.S. Public Land Survey Monument Record is correct and complete to the best of my knowledge and belief.

Timothy J. Rusch 02-07-2007
Signature Date