

4320923 0000

# U.S. PUBLIC LAND SURVEY MONUMENT RECORD

(Prepared and as required by S. A-E 7.08 WI Administrative Code)

The SOUTHEAST corner of Section 23, T. 32 N., R. 9 E., Langlade County, WI  
Corner was (check all that apply)

- Restored through acceptance of an obliterated evidence location.
- Restored through acceptance of a found perpetuated location.
- Determined to be lost and re-established through proportionate methods. (show bearings and distances to PLSS corners used for proportioning.)
- Restored/recovered/re-established in a location that differs from a previously established position. (Show difference in plan view below.)
- Check here if additional information is shown on the reverse side of this form.

## Describe record evidence, recovered physical evidence, occupational evidence, testimonial evidence, and all other evidence considered in the recovery/restoration of the corner.

1860 - Original corner established by H.C. Fellows - bearing trees: Fir, 6", S83°E, 23 links and a Birch, 6", N80°W, 11 links.

FB 94-103 - M. Hutchinson had a distance along the South line of the SE1/4 of Section 23 of 37.39 chains or 2467.74'.

2011 - C. Brinkmeier located c/l's at the 40 corners, then intersected them, compared distance from Hutchinson and set a gear headed spike at the computed position.

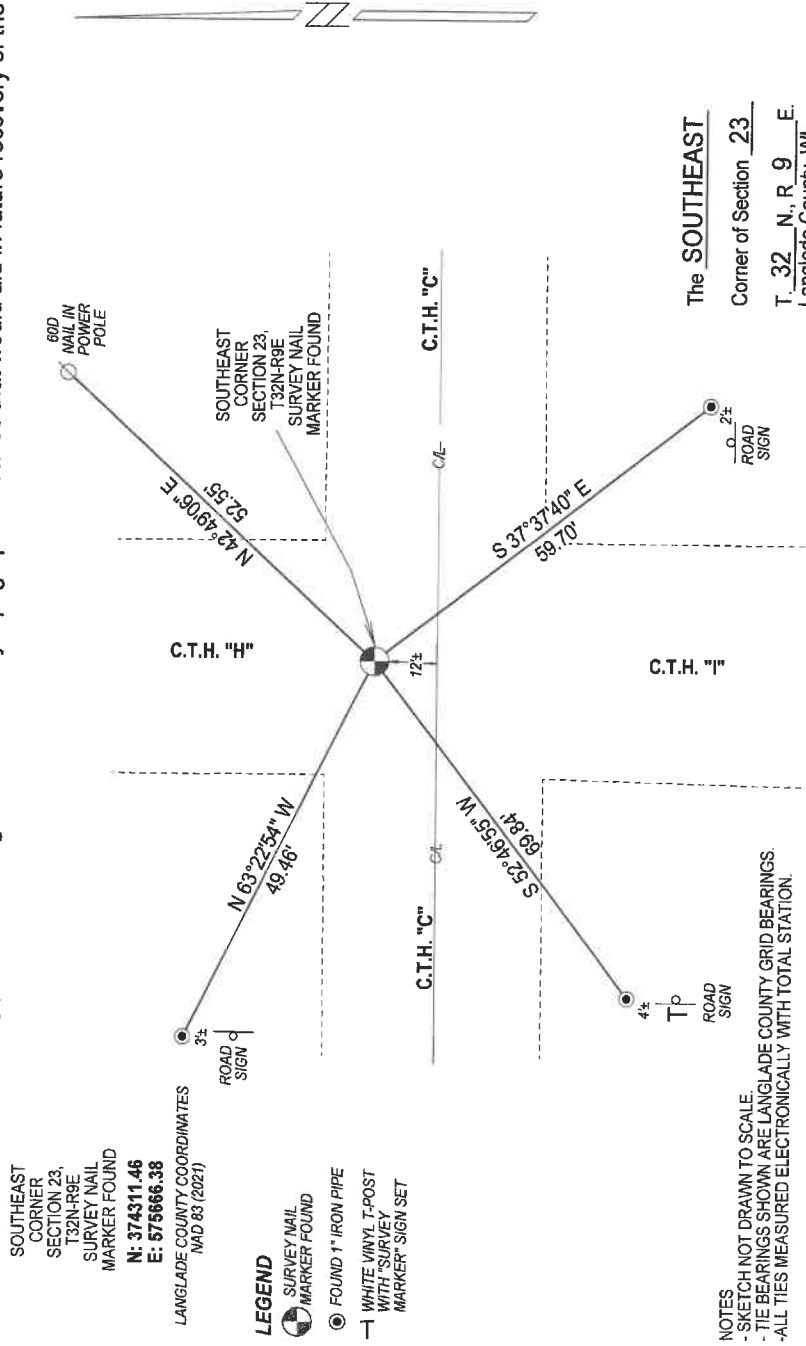
2019 - D. Tlustly notes he set a SN-1 nail in new pavement for the corner.

2022 - I found the existing survey nail marker set by Tlustly, verified corner location from ties.

## Physical description of the monument set:

Found a survey nail marker at corner location and tied it out as shown below.

Describe the accessories used to perpetuate the location of the corner. Include a plan view drawing and indicate accessories found/set. Describe measuring point on bearing trees. Show any topographic features that would aid in future recovery of the corner.



The SOUTHEAST  
Corner of Section 23  
T. 32 N., R. 9 E.  
Langlade County, WI

SURVEYORS SEAL



I, Michael J. Hoffman certify that the corner location shown on this record was determined by me or under my direction and control and that this U.S. Public Land Survey Monument Record is correct and complete to the best of my knowledge and belief.

Michael J. Hoffman Signature  
12/12/2022 Date

INDEX No. R - 21



○ = Location of corner

CERTIFIED LAND CORNER RESTORATION

Index No. R-21

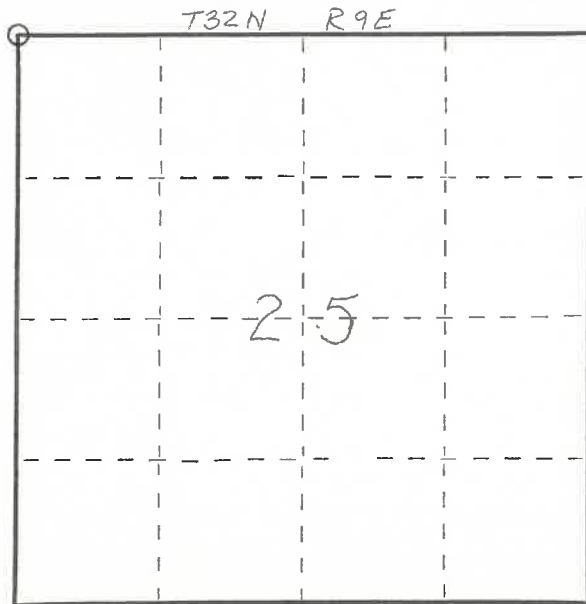
State of Wisconsin }  
 County of LANGLADE } ss.

I WESLEY J. TRADEWELL, do hereby certify that on the 20<sup>TH</sup> day of APRIL, 19 79, I found evidence of the NORTHWEST corner of SECTION 25 Township 32, North, Range 9 EAST, Fourth Principal Meridian, as described hereon; and that from this evidence I established a new monument and accessories as described hereon to perpetuate the original location of this corner.

Resident witnesses:

.....  
 .....  
 .....

FORM 985 H. C. MILLER CO., MILWAUKEE



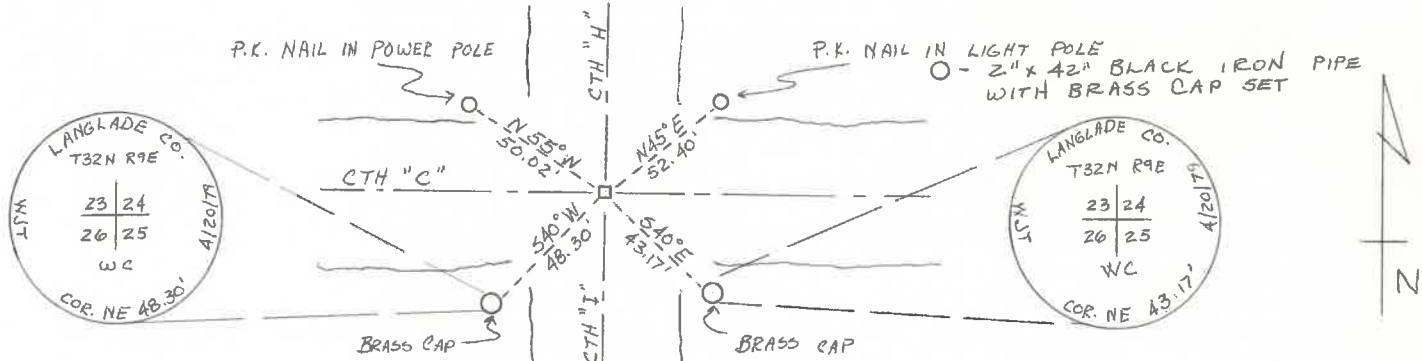
○ = Corner monument restored.

History of original corner establishment:

Description of corner evidence found:

FOUND 1 1/4" x 2 1/2" IRON BAR IN ROAD INTERSECTION, 12" BELOW PAVEMENT.  
 SET 3/4" x 8" IRON ROD OVER FOUND IRON BAR, FLUSH WITH PAVEMENT.

Description of monument and accessories I established to perpetuate the original location of this corner.



Dated at ANTIGO, Wis., this 25<sup>TH</sup> day of APRIL, 19 79.

Signature Wesley J. Tradewell Title REGISTERED LAND SURVEYOR Registration No. 1342  
 (County Surveyor, Registered Land Surveyor, or other duly authorized official)

Office of Register of Deeds, County of \_\_\_\_\_, I hereby certify that the within instrument was filed in this office for record on the \_\_\_\_\_ day of \_\_\_\_\_, 19 \_\_\_\_\_ at \_\_\_\_\_ o'clock \_\_\_\_\_ M.

.....  
 (Register of Deeds)  
 By..... Deputy

