

# U.S. PUBLIC LAND SURVEY MONUMENT RECORD

(Prepared and as required by S. A-E 7.08 WI Administrative Code)

43209 22 20 00

The WEST 1/4 corner of Section 23, T. 32 N., R. 9 E., Langlade County, WI

Corner was (check all that apply)

- Restored through acceptance of an obliterated evidence location.
- Restored through acceptance of a found perpetuated location.
- Determined to be lost and re-established through proportionate methods. (show bearings and distances to PLSS corners used for proportioning.)
- Restored/recovered/re-established in a location that differs from a previously established position. (Show difference in plan view below.)
- Check here if additional information is shown on the reverse side of this form.

**Describe record evidence, recovered physical evidence, occupational evidence, testimonial evidence, and all other evidence considered in the recovery/restoration of the corner.**

Sept. 1860 - H.C. Fellows set the West 1/4 corner post. BT's: 12" Maple, S80W, 24 links  
8" Fir, S38E, 5 links

In the 1990's - Surveyor Ray Hallisy indicated that he recalled this corner being monumented by RIPCO Surveyors. No other notes or maps were found in my research.

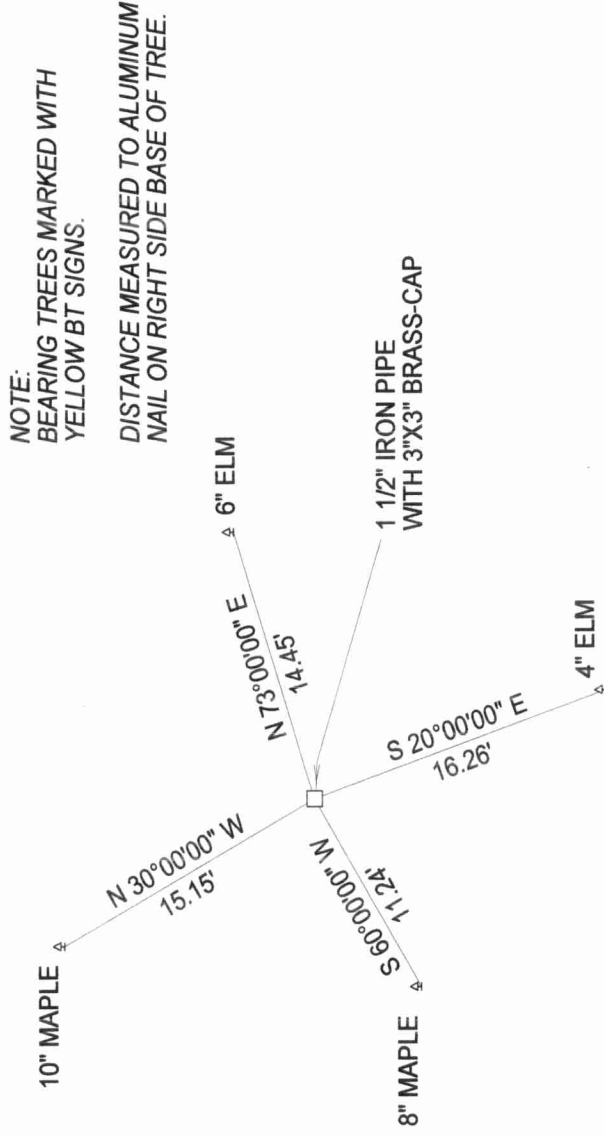
December 2006 - I found a RIPCO monument, a 1 1/2 inch iron pipe with a 3 inch by 3 inch brass plate, at the corner location. I also found an aluminum pipe with aluminum cap at the S 1/16 corner approximately midpoint between the Southeast corner and this location. I accept this location as the best evidence of the perpetuation of the original corner.

## Physical description of the monument set:

I left the 1 1/2 inch iron pipe with a 3 inch by 3 inch brass plate, and tied as follows.

Describe the accessories used to perpetuate the location of the corner. Include a plan view drawing and indicate accessories found/set. Describe measuring point on bearing trees. Show any topographic features that would aid in future recovery of the corner.

BEARINGS ARE BASED ON MAGNETIC HAND COMPASS.



NOTE:  
BEARING TREES MARKED WITH  
YELLOW BT SIGNS.

DISTANCE MEASURED TO ALUMINUM  
NAIL ON RIGHT SIDE BASE OF TREE.

The WEST 1/4

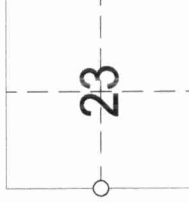
Corner of Section 23

T. 32 N., R. 9 E.  
Langlade County, WI

SURVEYORS SEAL

I, Timothy J. Rusch, certify that the corner location shown on this record was determined by me or under my direction and control and that this U.S. Public Land Survey Monument Record is correct and complete to the best of my knowledge and belief.

Timothy J. Rusch 02-07-2007  
Signature Date



○ = Location of corner

INDEX No. **P17** 32-9

