

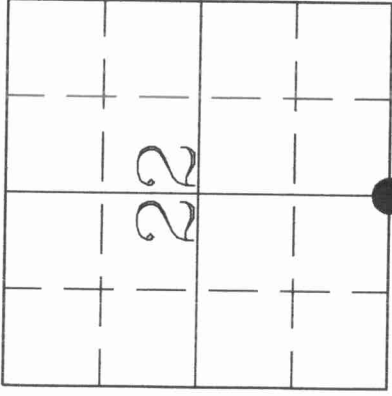
3209220020

U.S. PUBLIC LAND SURVEY MONUMENT RECORD

HISTORY OF ORIGINAL CORNER ESTABLISHMENT AND SUBSEQUENT RESTORATION AND DESCRIPTION OF ANY RECORD, MONUMENT OCCUPATIONAL, TESTIMONIAL OR OTHER EVIDENCE CONSIDERED:

The Original quarter corner was established in 1860 by Hiram C. Fellows. Original bearing trees: Hemlock 6" S12W 12 lks., Hemlock 12" N43E 22lks. No other record of the quarter corner being visited or set exists in the County Surveyor's Office. In March of 2002, Charley Brinkmeier and Gerry Bahar, doing survey work in the SW 1/4 of Sec 22, found a N-S 40 Fence. We doubled the distance from the SW Cor of the Section to the 40 Fence, and set a Gear Headed Spike at this location, on the south line of the section, also the centerline of C.H.Y. C, which comes within 12' of an even split between the SW and SE corners of Sec 22.

● = LOCATION OF CORNER



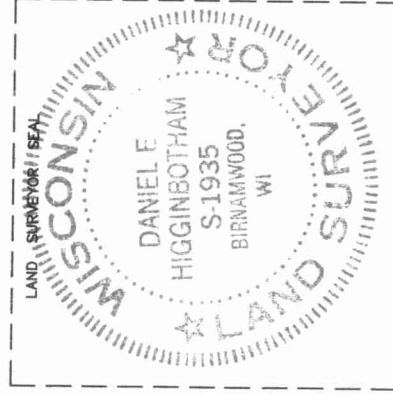
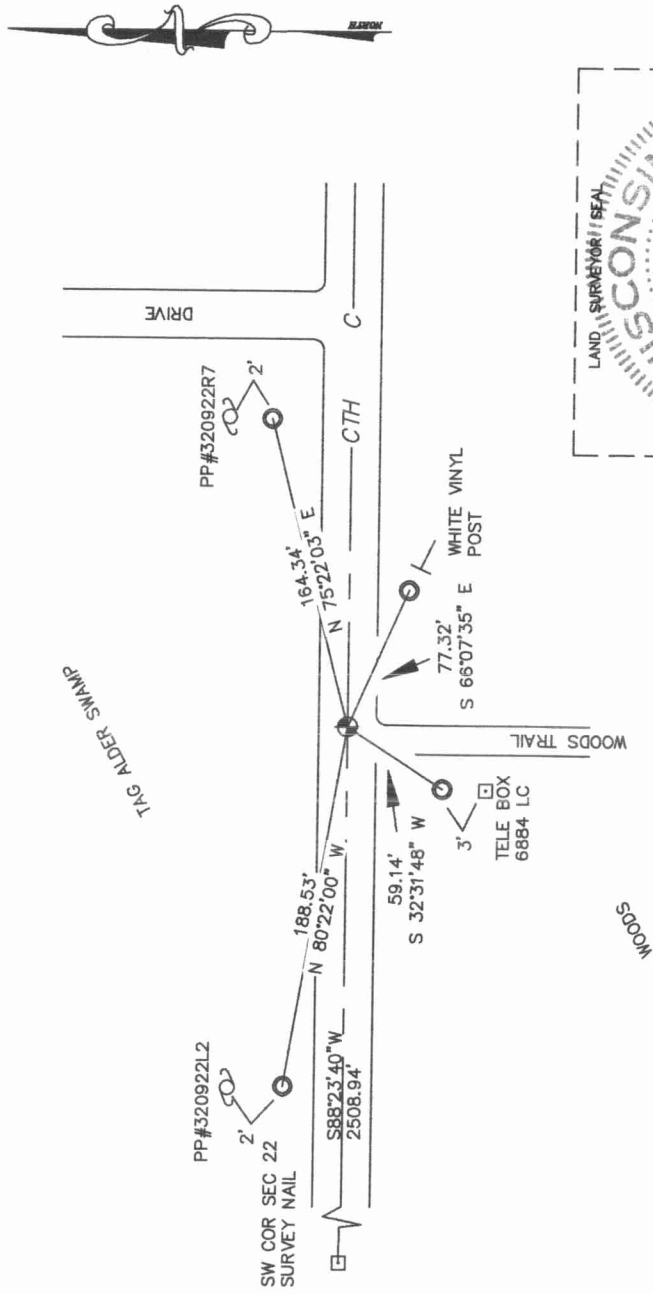
SECTION 22
TOWNSHIP 32 NORTH, RANGE 09 EAST
TOWN OF VILAS
LANGLADE COUNTY, WISCONSIN

CORNER WAS: (CHECK ALL THAT APPLY)

- RESTORED THROUGH ACCEPTANCE OF AN OBLITERATED EVIDENCE LOCATION
- RESTORED THROUGH ACCEPTANCE OF A FOUND PERPETUATED LOCATION
- CONSIDERED A LOST CORNER AND REESTABLISHED THROUGH LOST CORNER PROPORTIONATE METHODS (INCLUDE A PLAN VIEW DRAWING SHOWING DISTANCES AND DIRECTIONS TO OTHER PUBLIC LAND SURVEY CORNERS USED FOR PROPORTIONING AND DETERMINING THE CORNER LOCATION)
- RESTORED OR REESTABLISHED IN A LOCATION THAT DIFFERS FROM A PREVIOUS RESTORATION OR REESTABLISHMENT (INCLUDE A PLAN VIEW DRAWING AND INDICATE WHAT WAS SET AND/OR FOUND)
- CHECK IF THERE IS ADDITIONAL INFORMATION ON BACK

DESCRIBE THE MONUMENT AND ACCESSORIES USED TO PERPETUATE THE LOCATION OF THE CORNER. (INCLUDE A PLAN VIEW DRAWING AND INDICATE WHAT WAS SET AND/OR FOUND) ALSO INCLUDE FOUR TIES TO THE SECTION CORNER AND DESCRIPTION OF THE TIES.

- SET GEAR HEADED SPIKE ● S1/4 LOCATION
- SET 3/4"x30" REBARS AT TIES



DANIEL E. HIGGINBOTHAM
(type or print name) CERTIFY THAT THE CORNER LOCATION SHOWN ON THIS RECORD WAS DETERMINED BY ME OR UNDER MY DIRECTION AND CONTROL AND THAT THIS U.S. PUBLIC LAND SURVEY MONUMENT RECORD IS CORRECT AND COMPLETE TO THE BEST OF MY KNOWLEDGE AND BELIEF.

Daniel E. Higginbotham
SIGNATURE 3/19/02 DATE

R 15 INDEX NO.