

CERTIFIED LAND CORNER RESTORATION

Index No. R-11

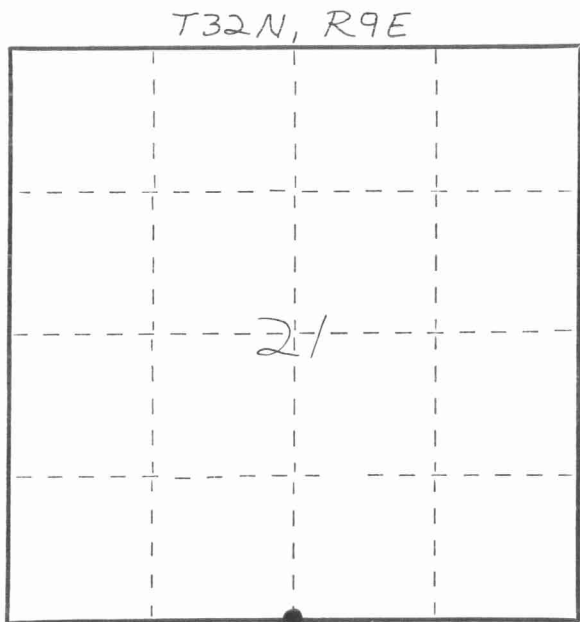
State of Wisconsin }
County of LANGLADE } ss.

I WILLIAM F. KELLY, do hereby certify that on the 29th day of MAY, 1981, I found evidence of the SOUTH 1/4 corner of SECTION 21 Township 32, North, Range 9 EAST, Fourth Principal Meridian, as described hereon; and that from this evidence I established a new monument and accessories as described hereon to perpetuate the original location of this corner.

Resident witnesses:

.....
.....
.....

FORM 965 H. C. MILLER CO., MILWAUKEE



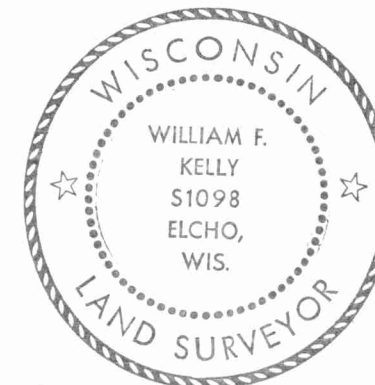
○ = Corner monument restored.

History of original corner establishment:

ORIGINAL CORNER ESTABLISHED
BY HIRAM C. FELLOWS IN SEPT., 1860

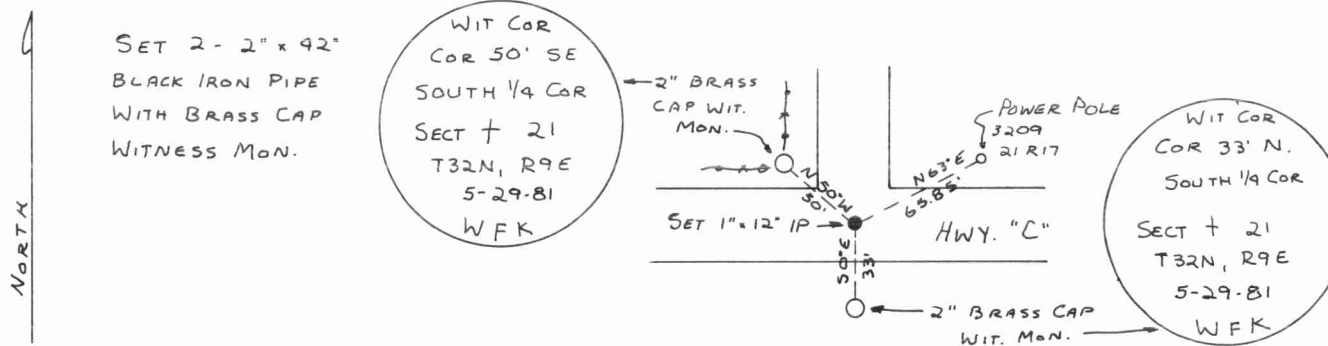
Description of corner evidence found:

NO EVIDENCE LOCATED. CORNER
EST. BY OCCUPATION OF EXISTING
ROADS AND PROPERTY LINES



William F. Kelly

Description of monument and accessories I established to perpetuate the original location of this corner.



Dated at ELCHO, Wis., this 29th day of MAY, 1981.

Signature William F. Kelly Title COUNTY SURVEYOR Registration No. 1098
(County Surveyor, Registered Land Surveyor, or other duly authorized official)

Office of Register of Deeds, County of....., I hereby certify that the within instrument was filed in this office for record on the.....day of....., 19..... at.....o'clock..... M.

.....
(Register of Deeds)

By.....Deputy