

U.S. PUBLIC LAND SURVEY MONUMENT RECORD

No. R-7

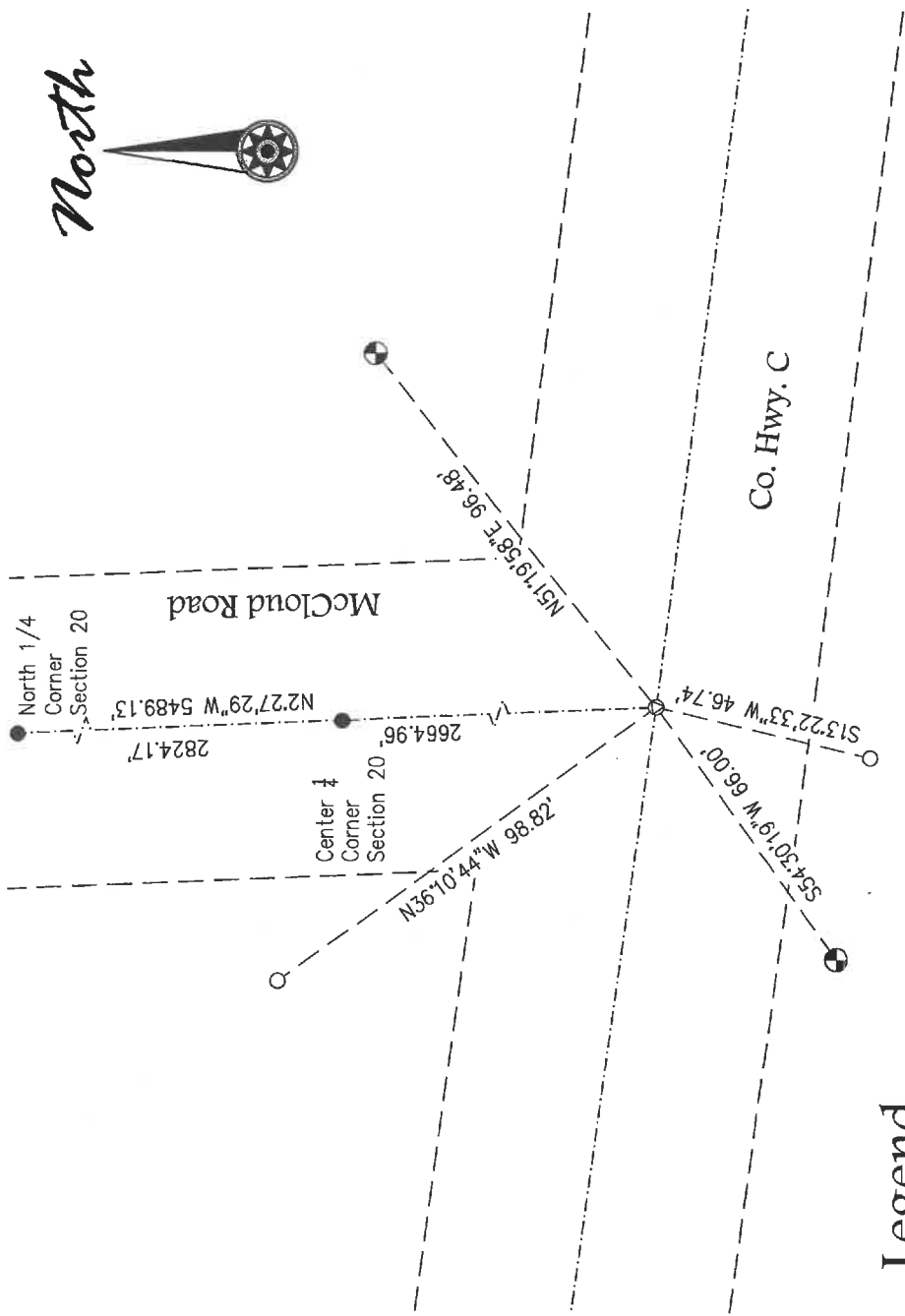
History of original corner establishment:

Original corner established by H.C. Fellows in September 1860

Corner was reestablished in May, 1981 by W.F. Kelly.

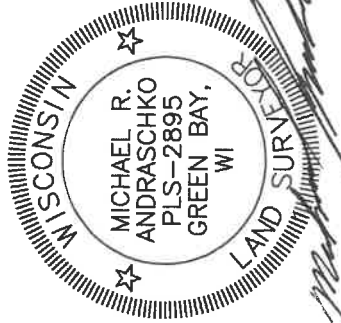
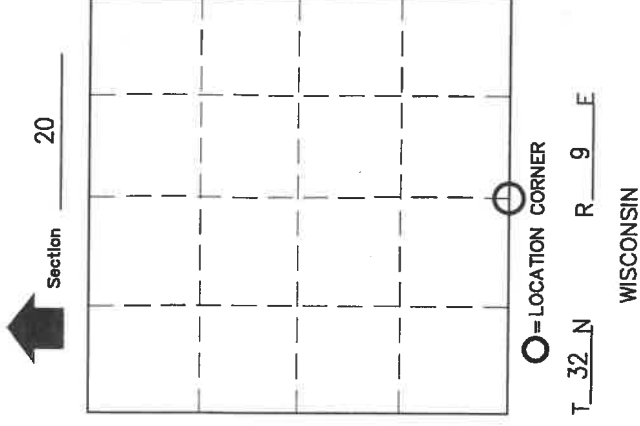
Description of corner evidence found: Found a Mag nail at corner location. Mag nail fit well with the one found undisturbed tie and with the Center of section and North 1/4 Corner found.

4320920 0020



Legend

- Langlade County aluminum monument
- 1.32" (o.d.) x 18" iron pipe weighing 1.68 lbs/lin. ft set
- ⊕ PK nail found
- 1" iron pipe found



10/30/19

Town of Vilas

County of Langlade

Drafted by M. Andraschko