

LANGLADE COUNTY U.S. PUBLIC LAND CORNER RESTORATION

The South 1/4 corner of Section 20, T. 32 N., R. 9 E., Langlade County, WI.

Corner was: (check all that apply)

4320920 0020

- Restored through acceptance of an obliterated evidence location.
- Restored through acceptance of a found perpetuated location.
- Determined to be lost and re-established through proportionate methods.
- Show bearings and distances to PLSS corners used for proportioning, and show original distances).
- Restored/recovered/re-established in a location that differs from a previously established position.

(Show difference in plan view below).

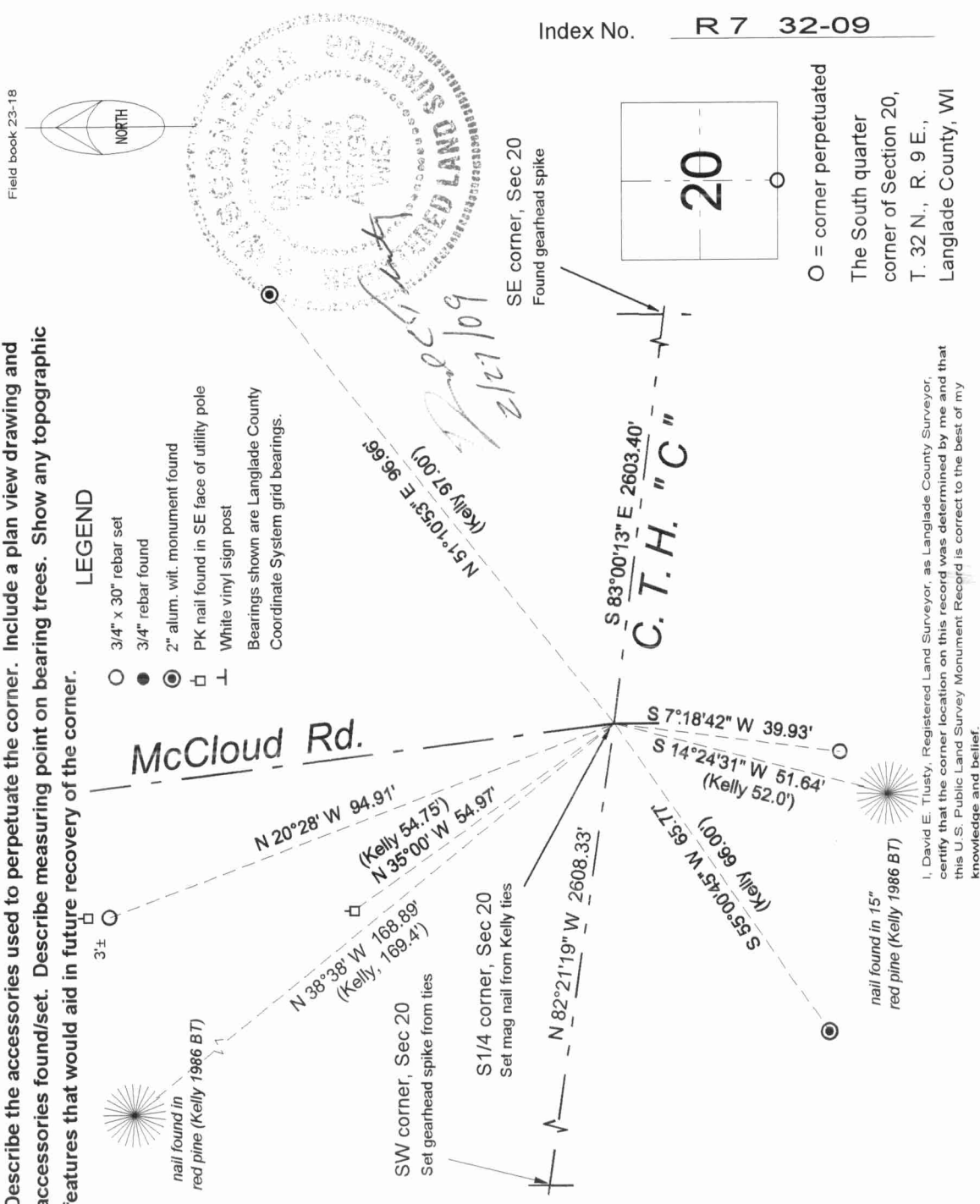
Describe record evidence, recovered physical evidence, occupational evidence, testimonial evidence and all other evidence considered in the recovery/restoration of the corner.

The original corner was established in 1860 by Hiram C. Fellows. Original bearing trees: hemlock, 12", S16W, 12 links and a hemlock, 12", N56E, 19 links. In 1981, former surveyor Kelly stated: "No evidence located. Corner established by existing occupation of property and road locations". He set a 1 1/2" x 12" ip w/R.R. spike in center. 1984 plans for CTH "C" show the corner as a P.K. nail. In 1986, Kelly set new witness monument and said the corner was an "existing R.R. spike". 11/07/08 D. Tlusty. Got a good magnetic reading in road, found PK nail down 0.4' in pavement. Measured to Kelly ties to find that the PK nail does not fit Kellys ties. I re-set the corner by using a 'best fit' of 4 Kelly ties found and as shown below. PK found is S 73°25' E, 2.58 feet from the corner position I established from Kelly ties.

Physical description of the monument set:

Set a MAG nail for corner.

Describe the accessories used to perpetuate the corner. Include a plan view drawing and accessories found/set. Describe measuring point on bearing trees. Show any topographic features that would aid in future recovery of the corner.



I, David E. Tlusty, Registered Land Surveyor, as Langlade County Surveyor, certify that the corner location on this record was determined by me and that this U.S. Public Land Survey Monument Record is correct to the best of my knowledge and belief.