

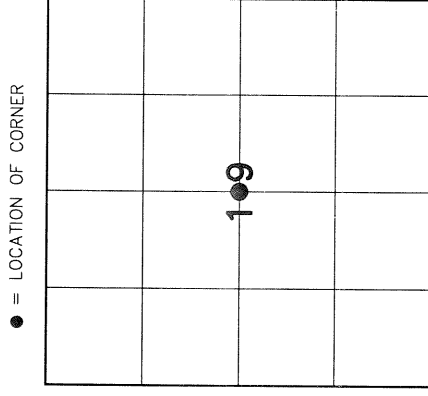
4320919 2020 2013

U.S. PUBLIC LAND SURVEY MONUMENT RECORD

HISTORY OF ORIGINAL CORNER ESTABLISHMENT AND SUBSEQUENT RESTORATION AND DESCRIPTION OF ANY RECORD, MONUMENT OCCUPATIONAL, TESTIMONIAL OR OTHER EVIDENCE CONSIDERED:

IN FIELD BOOK 122 PG. 79 THEY RAN THE E-W 1/4 LINE AND ALSO RAN FROM THE NORTH 1/4 TO THE CENTER. THE RECORD DISTANCE MATCHED REASONABLY WELL WITH OUR DISTANCE FROM THE WEST 1/4 TO THE CENTER. BUT THE EXISTING FENCE IS OFF BY 67 FEET TO FAR TO THE WEST WE ASSUMED THEY DROPPED A CHAIN WHEN SETTING THE CORNER.

WE SET A 2" X 30" ALUMINUM PIPE WITH ALUMINUM CAP AT THE INTERSECTION OF THE E-W AND N-S 1/4 LINES.

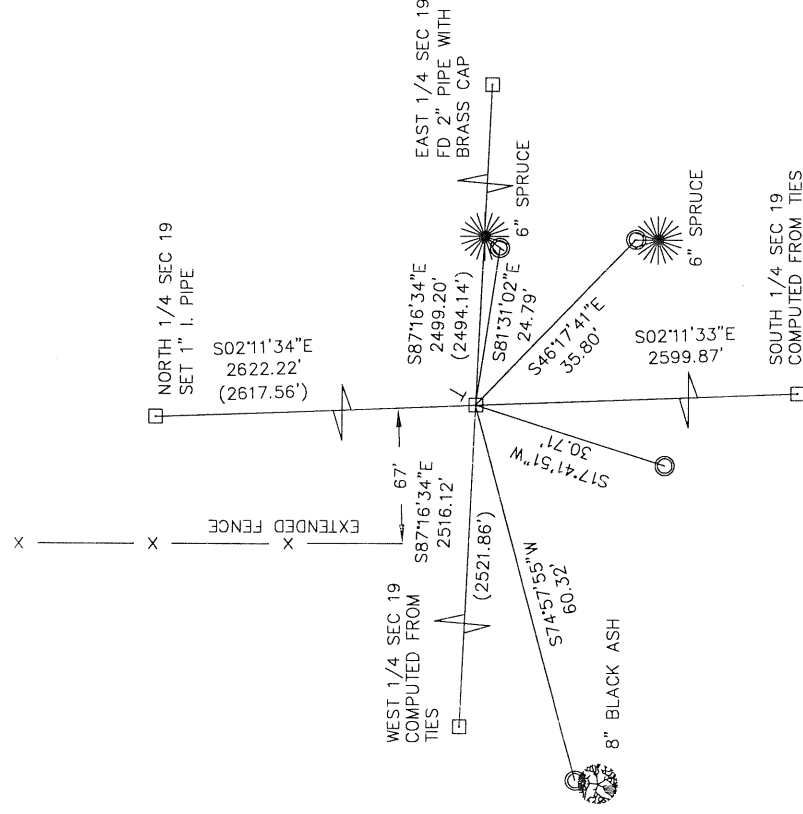


SECTION 19
 TOWNSHIP 32 NORTH, RANGE 9 EAST
 TOWN OF VILAS
 LANGLADE COUNTY, WISCONSIN

CORNER WAS: (CHECK ALL THAT APPLY)

- RESTORED THROUGH ACCEPTANCE OF AN OBLITERATED EVIDENCE LOCATION
- RESTORED THROUGH ACCEPTANCE OF A FOUND PERPETUATED LOCATION
- CONSIDERED A LOST CORNER AND REESTABLISHED THROUGH LOST CORNER PROPORTIONATE METHODS (INCLUDE A PLAN VIEW DRAWING SHOWING DISTANCES AND DIRECTIONS TO OTHER PUBLIC LAND SURVEY CORNERS USED FOR PROPORTIONING AND DETERMINING THE CORNER LOCATION)
- RESTORED OR REESTABLISHED IN A LOCATION THAT DIFFERS FROM A PREVIOUS RESTORATION OR REESTABLISHMENT (INCLUDE A PLAN VIEW DRAWING AND INDICATE WHAT WAS SET AND/OR FOUND)
- CHECK IF THERE IS ADDITIONAL INFORMATION ON BACK

DESCRIBE THE MONUMENT AND ACCESSORIES USED TO PERPETUATE THE LOCATION OF THE CORNER. (INCLUDE A PLAN VIEW DRAWING AND INDICATE WHAT WAS SET AND/OR FOUND) ALSO INCLUDE FOUR TIES TO THE SECTION CORNER AND DESCRIPTION OF THE TIES.



SET 3/4"X30" IRON PIPES AT ALL TIE LOCATIONS

BEARINGS ARE REFERENCED TO THE LANGLADE COUNTY COORDINATE SYSTEM

T - SET 6' WHITE T-POST

CHARLEY G. BRINKMEIER

(type or print name) CERTIFY THAT THE CORNER LOCATION SHOWN ON THIS RECORD WAS DETERMINED BY ME OR UNDER MY DIRECTION AND CONTROL AND THAT THIS U.S. PUBLIC LAND SURVEY MONUMENT RECORD IS CORRECT AND COMPLETE TO THE BEST OF MY KNOWLEDGE AND BELIEF.

Charley G. Brinkmeier
 SIGNATURE

3-20-13
 DATE

