

43209 19 20 00

U.S. PUBLIC LAND SURVEY MONUMENT RECORD

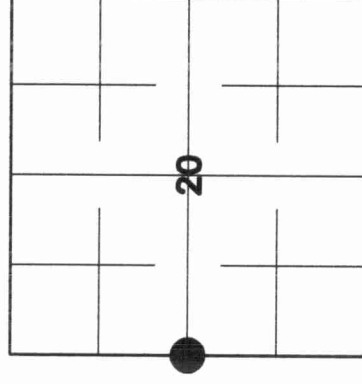
HISTORY OF ORIGINAL CORNER ESTABLISHMENT AND SUBSEQUENT RESTORATION AND DESCRIPTION OF ANY RECORD, MONUMENT OCCUPATIONAL, TESTIMONIAL OR OTHER EVIDENCE CONSIDERED:

THE ORIGINAL CORNER WAS SET BY FELLOWS IN 1860. NO EVIDENCE WAS FOUND OF THE ORIGINAL BEARING TREES WERE:

16" HEMLOCK - S42°E 32 LNKS
20 MAPLE - N70°W 34 LNKS

HUTCHINSON RAN THE EAST - WEST 1/4 LINE IN MARCH, 1921 WITH A DISTANCE OF 76 CHAINS. WE FOUND A FENCE CORNER INTERSECTION WHICH MATCHED HUTCHINSONS OVER ALL EAST-WEST 1/4 LINE DISTANCE OF 76 CHAINS (5,016'), WE HAD 5,010' TO THE CENTER OF THE ROAD, WE DID NOT LOCATE THE WEST 1/4 CORNER. HUTCHINSON HAD 37.79 CHAINS (2,494.14') FROM THE CENTER TO THE EAST 1/4, WE HAD A DISTANCE OF 2,560' FROM A FENCE CORNER AT THE CENTER TO THE FENCE CORNER AT THE EAST 1/4, WHICH IS 65.86' OFF WHAT HUTCHINSON HAD. ACCEPTED FENCE CORNER AS THE LOCATION AND SET A 2"x30" BRASS CAP MONUMENT.

● = LOCATION OF CORNER

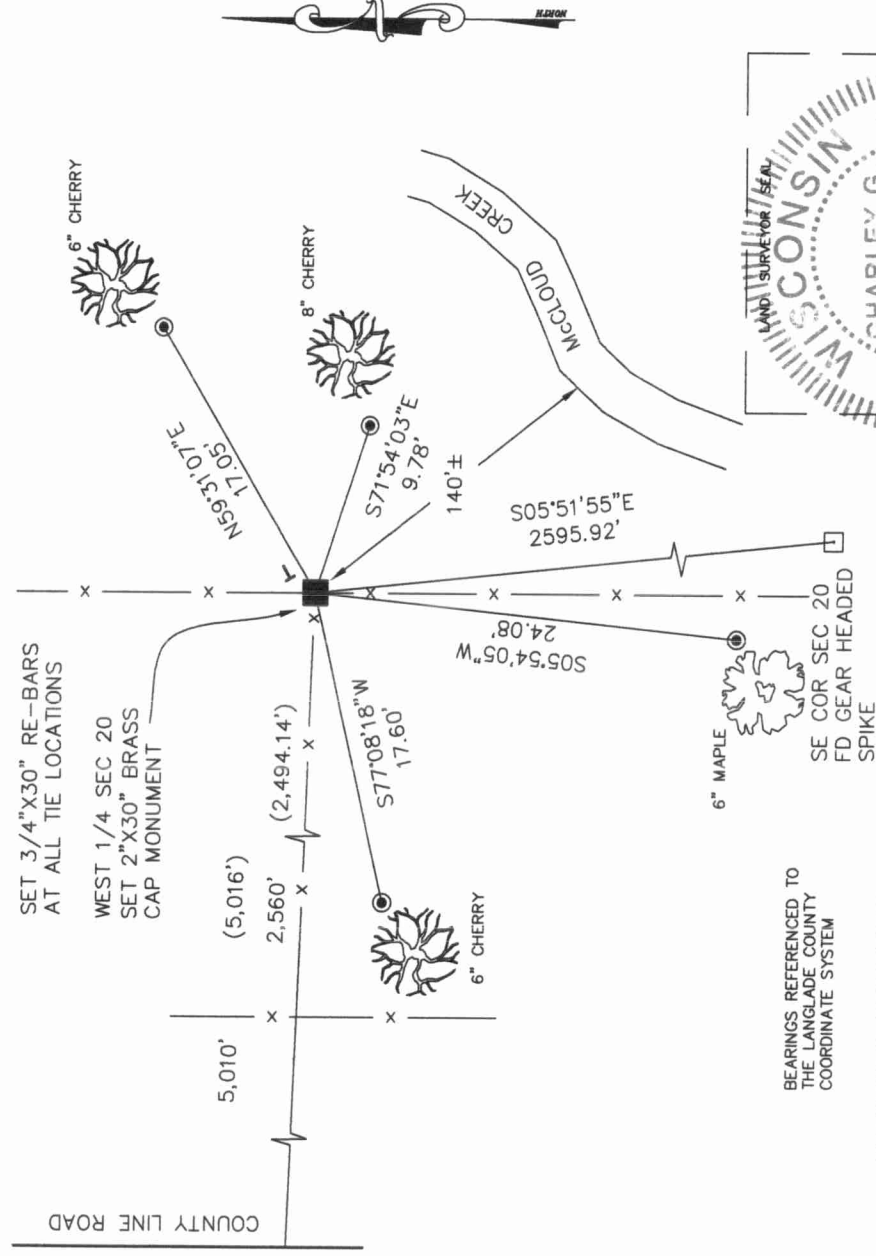


SECTION 20
TOWNSHIP 32 NORTH, RANGE 9 EAST
TOWN OF VILAS
LANGLADE COUNTY, WISCONSIN

CORNER WAS: (CHECK ALL THAT APPLY)

- RESTORED THROUGH ACCEPTANCE OF AN OBLITERATED EVIDENCE LOCATION
- RESTORED THROUGH ACCEPTANCE OF A FOUND PERPETUATED LOCATION
- CONSIDERED A LOST CORNER AND REESTABLISHED THROUGH LOST CORNER PROPORTIONATE METHODS (INCLUDE A PLAN VIEW DRAWING SHOWING DISTANCES AND DIRECTIONS TO OTHER PUBLIC LAND SURVEY CORNERS USED FOR PROPORTIONING AND DETERMINING THE CORNER LOCATION)
- RESTORED OR REESTABLISHED IN A LOCATION THAT DIFFERS FROM A PREVIOUS RESTORATION OR REESTABLISHMENT (INCLUDE A PLAN VIEW DRAWING AND INDICATE WHAT WAS SET AND/OR FOUND)
- CHECK IF THERE IS ADDITIONAL INFORMATION ON BACK

DESCRIBE THE MONUMENT AND ACCESSORIES USED TO PERPETUATE THE LOCATION OF THE CORNER. (INCLUDE A PLAN VIEW DRAWING AND INDICATE WHAT WAS SET AND/OR FOUND) ALSO INCLUDE FOUR TIES TO THE SECTION CORNER AND DESCRIPTION OF THE TIES.



CHARLEY G. BRINKMEIER

(Type or print name) CERTIFY THAT THE CORNER LOCATION SHOWN ON THIS RECORD WAS DETERMINED BY ME OR UNDER MY DIRECTION AND CONTROL AND THAT THIS U.S. PUBLIC LAND SURVEY MONUMENT RECORD IS CORRECT AND COMPLETE TO THE BEST OF MY KNOWLEDGE AND BELIEF.

Charley G. Brinkmeier
SIGNATURE

12-29-08
DATE



P5 3209
INDEX NO.