

U.S. PUBLIC LAND SURVEY MONUMENT

(Prepared and as required by S. A-E 7.08 WI Administrative Code)

The NORTH 1/4 corner of Section 30, T. 32 N., R. 9 E., Langlade County, WI
3209190020

Corner was: (check all that apply)

- Restored through acceptance of an obliterated evidence location.
- Restored through acceptance of a found perpetuated location.
- Determined to be a lost and re-established through proportionate methods. (Show bearings and distances to PLSS corners used for proportioning.)
- Restored/recovered/reestablished in a location that differs from a previously established position. (Show difference in plan view below.)

Check here if additional information is shown on the reverse side of this form.

Describe record evidence, recovered physical evidence, occupational evidence, testimonial evidence and all other evidence considered in the recovery/restoration of the corner.

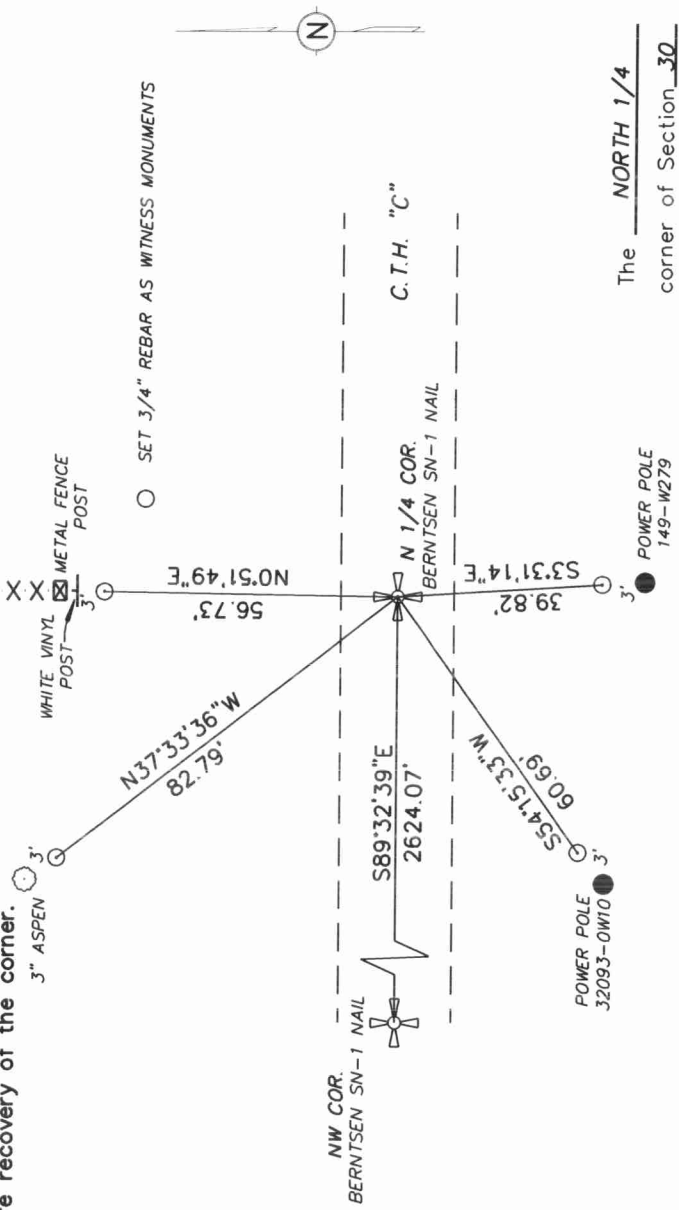
ORIGINAL CORNER ESTABLISHED BY HIRAM C. FELLOWS IN SEPT, 1860
 WITH THE FOLLOWING BEARING TREES: SUGAR, 16"- N24°E, 32LKS.
 SUGAR, 12"- S30°E, 17 LKS.
 CORNER WAS PERPETUATED IN 1981 AND WAS DESTROYED BY CONSTRUCTION
 IN THE 1990's.
 FOUND 3" ALUM. CAP MONUMENT TO THE NORTH, STUMP OF BLACK CHERRY TO
 THE SOUTH, 6" MAPLE TO THE SOUTHWEST AND A FALLEN BALSAM
 ALSO TO THE SOUTHWEST THAT WAS ESTABLISHED BY WILLAM F. KELLY
 IN SEPT, 1985. THE 3" CAP ALUM. MONUMENT ESTABLISHED BY KELLY
 WAS DESTROYED AND PULLED BY US.

SET BERNTSEN SN-1 NAIL AT INTERSECTION OF RECORD
 DISTANCES FROM OLD BEARING TREES.

Physical description of the monument set:

BERNTSEN SN-1 NAIL

Describe the accessories used too perpetuate the location of the corner. Include a plan view drawing and indicate accessories found/set. Describe measuring point on bearing trees. Show any topographic features that would aid in future recovery of the corner.



The NORTH 1/4
 corner of Section 30
 T. 32 N., R. 9 E.
 Langlade County, WI

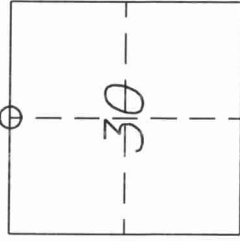
SURVEYORS SEAL



I, William W. Nutter, R.L.S., certify that the corner location shown on this record was determined by me or under my direction and control and that this U.S. Public Land Survey Monument Record is correct and complete to the best of my knowledge and belief.

William W. Nutter 7-20-00
 Signature S-2299 Date

INDEX No. R 3



○ = Location of corner