

LANGLADE COUNTY U.S. PUBLIC LAND CORNER RESTORATION

The Southeast corner of Section 19, T. 32 N., R. 9 E., Langlade County, WI.

Corner was: (check all that apply)

- Restored through acceptance of an obliterated evidence location.
- Restored through acceptance of a found perpetuated location.
- Determined to be lost and re-established through proportionate methods.
- Show bearings and distances to PLSS corners used for proportioning, and show original distances).
(Show difference in plan view below).
- Restored/recovered/re-established in a location that differs from a previously established position.

4320919 0000

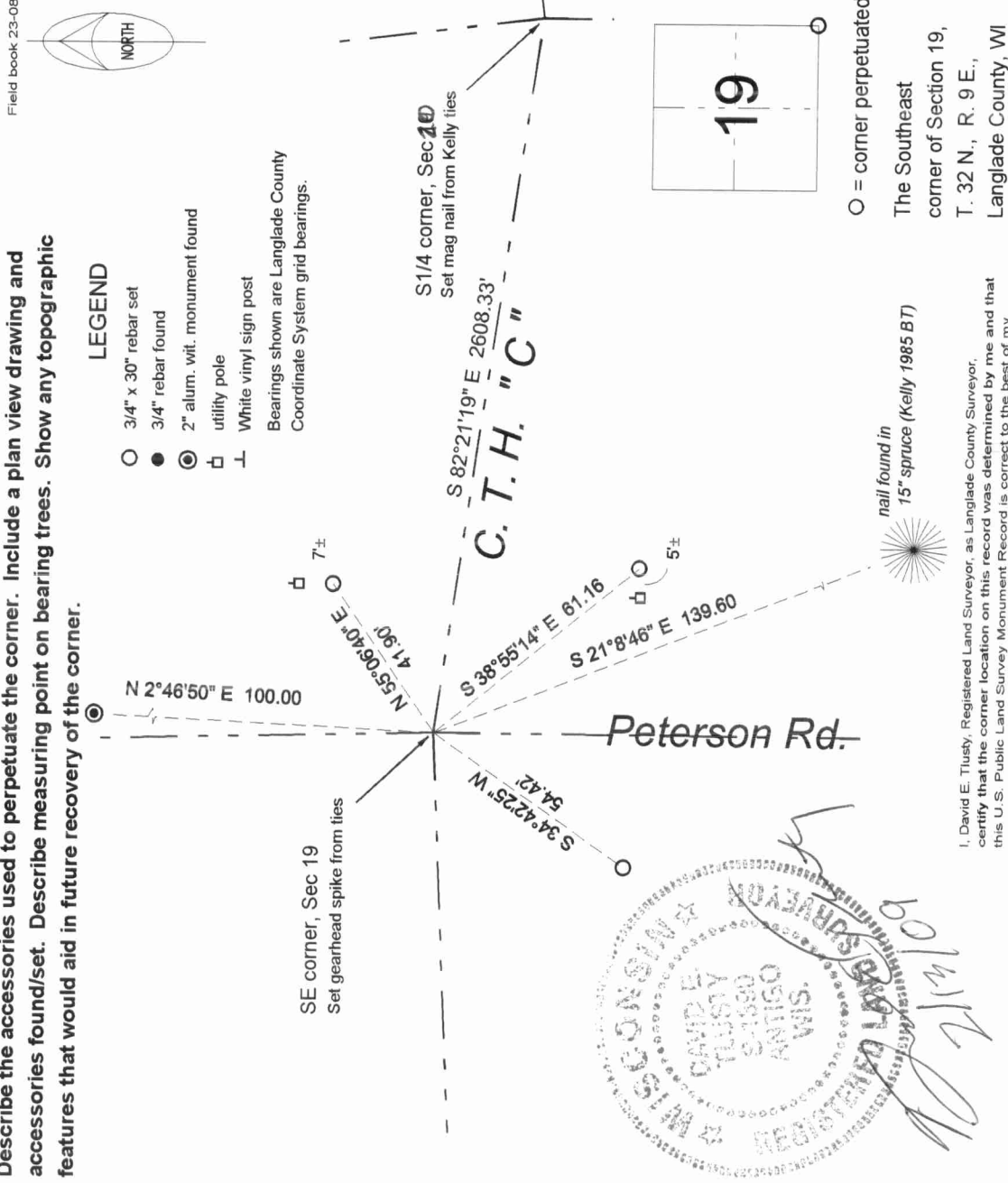
Describe record evidence, recovered physical evidence, occupational evidence, testimonial evidence and all other evidence considered in the recovery/restoration of the corner.

The original corner was established in 1860 by Hiram C. Fellows. Original bearing trees: hemlock, 12", S06W, ? dist and a birch, 10", N06E, 14 links. In 1906, Brooks (FB94-12) said: "orig BT Hem N45 E instead of S45 E" ?? In 1981, former surveyor Kelly set the corner at the "road intersection and property fence line extension" from the north. In 1985, Kelly added more corner ties as Hwy "C" was to be rebuilt. 1107/08 D. Tlusty reset corner from two remaining Kelly ties: an aluminum monument to the north and a nail in a spruce tree SSE.

Physical description of the monument set:

Set a gearhead spike (with top broken off) to mark the corner.

Describe the accessories used to perpetuate the corner. Include a plan view drawing and accessories found/set. Describe measuring point on bearing trees. Show any topographic features that would aid in future recovery of the corner.



LEGEND

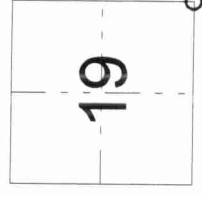
- 3/4" x 30" rebar set
- 3/4" rebar found
- ⊙ 2" alum. util. monument found
- ⊞ utility pole
- ⊥ White vinyl sign post

Bearings shown are Langlade County
Coordinate System grid bearings.

Field book 23-08



Index No. R 5 32-09



○ = corner perpetuated
The Southeast
corner of Section 19,
T. 32 N., R. 9 E.,
Langlade County, WI



I, David E. Tlusty, Registered Land Surveyor, as Langlade County Surveyor, certify that the corner location on this record was determined by me and that this U.S. Public Land Survey Monument Record is correct to the best of my knowledge and belief.