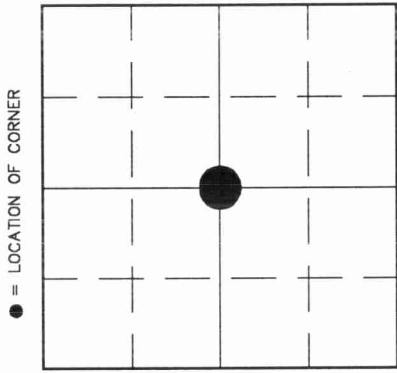


3209182020

U.S. PUBLIC LAND SURVEY MONUMENT RECORD

HISTORY OF ORIGINAL CORNER ESTABLISHMENT AND SUBSEQUENT RESTORATION AND DESCRIPTION OF ANY RECORD, MONUMENT OCCUPATIONAL, TESTIMONIAL OR OTHER EVIDENCE CONSIDERED:

THIS CORNER WAS NOT MONUMENTED IN THE ORIGINAL GOVT SURVEY.
 IN 1916, HUTCHINSON SET A 1 1/2" IRON PIPE AT THE CENTER OF SECTION 18 IN THE PROCESS OF HIS RESURVEY WORK.
 06/17/89 GERRY AND BECKY BAHAR FOUND THE 1 1/2" PIPE AT THE SOUTH END OF A FENCELINE AND RETIED.

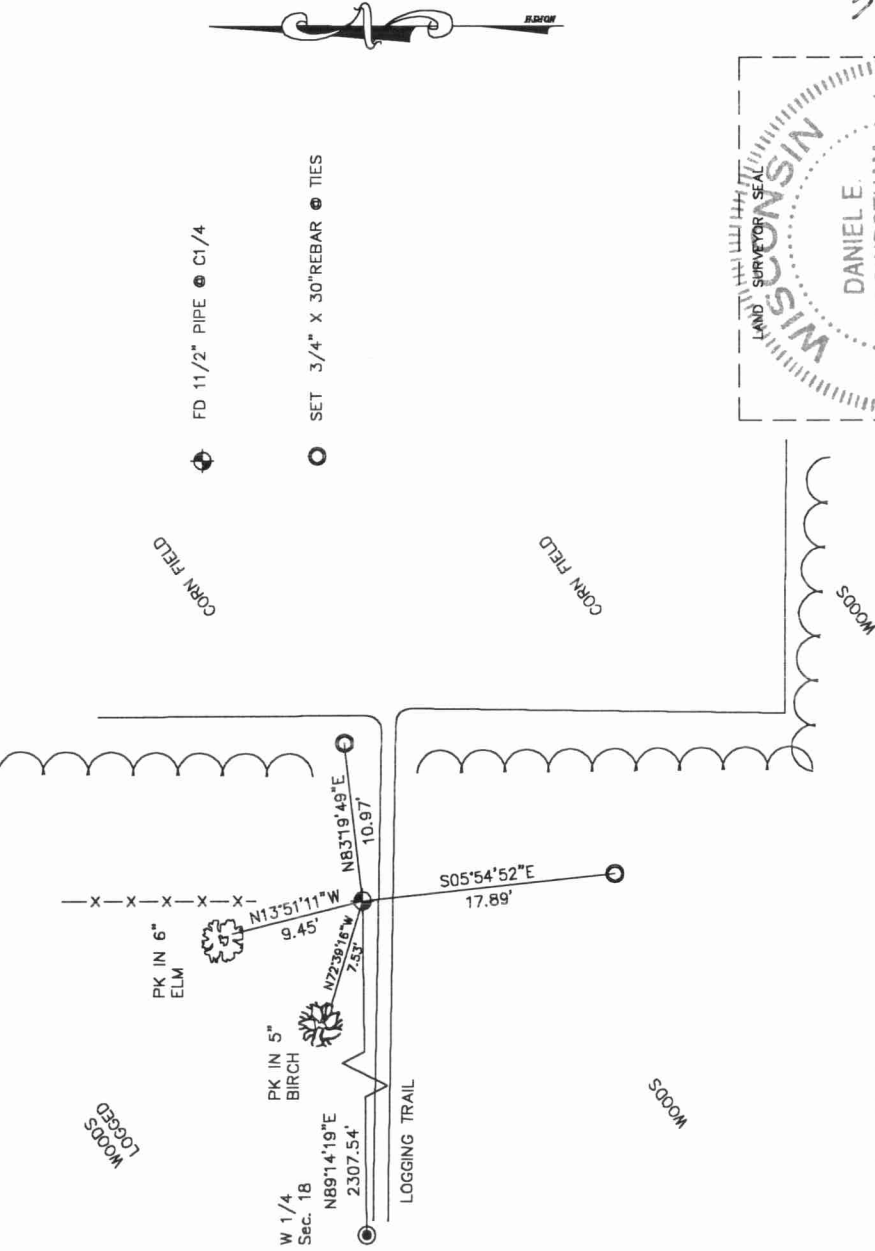


● = LOCATION OF CORNER

SECTION 18
 TOWNSHIP 32 NORTH, RANGE 9 EAST
 TOWN OF VILAS
 LANGUAGE COUNTY, WISCONSIN

- CORNER WAS: (CHECK ALL THAT APPLY)
- RESTORED THROUGH ACCEPTANCE OF AN OBLITERATED EVIDENCE LOCATION
 - RESTORED THROUGH ACCEPTANCE OF A FOUND PERPETUATED LOCATION
 - CONSIDERED A LOST CORNER AND REESTABLISHED THROUGH LOST CORNER PROPORTIONATE METHODS (INCLUDE A PLAN VIEW DRAWING SHOWING DISTANCES AND DIRECTIONS TO OTHER PUBLIC LAND SURVEY CORNERS USED FOR PROPORTIONING AND DETERMINING THE CORNER LOCATION)
 - RESTORED OR REESTABLISHED IN A LOCATION THAT DIFFERS FROM A PREVIOUS RESTORATION OR REESTABLISHMENT (INCLUDE A PLAN VIEW DRAWING AND INDICATE WHAT WAS SET AND/OR FOUND)
 - CHECK IF THERE IS ADDITIONAL INFORMATION ON BACK

DESCRIBE THE MONUMENT AND ACCESSORIES USED TO PERPETUATE THE LOCATION OF THE CORNER. (INCLUDE A PLAN VIEW DRAWING AND INDICATE WHAT WAS SET AND/OR FOUND) ALSO INCLUDE FOUR TIES TO THE SECTION CORNER AND DESCRIPTION OF THE TIES.



- ⊕ FD 1 1/2" PIPE ⊕ CI/4
- ⊙ SET 3/4" X 30"REBAR ⊙ TIES



DANIEL E. HIGGINBOTHAM
 (TYPE OR PRINT NAME) CERTIFY THAT THE CORNER LOCATION SHOWN ON THIS RECORD WAS DETERMINED BY ME OR UNDER MY DIRECTION AND CONTROL AND THAT THIS U.S. PUBLIC LAND SURVEY MONUMENT RECORD IS CORRECT AND COMPLETE TO THE BEST OF MY KNOWLEDGE AND BELIEF.
Daniel Higginbotham
 SIGNATURE 2-3-2000 DATE



L3
 32-9

INDEX NO.