

4320918 0000 2013

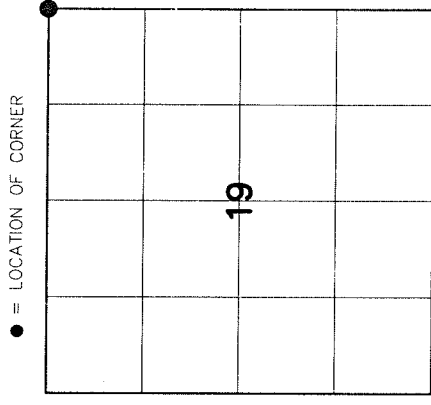
U.S. PUBLIC LAND SURVEY MONUMENT RECORD

HISTORY OF ORIGINAL CORNER ESTABLISHMENT AND SUBSEQUENT RESTORATION AND DESCRIPTION OF ANY RECORD, MONUMENT OCCUPATIONAL, TESTIMONIAL OR OTHER EVIDENCE CONSIDERED:

THE ORIGINAL CORNER WAS SET BY FELLOWS IN 1860 WITH THE ORIGINAL BEARING TREES OF:
 15" WHITE PINE - N45°W 50 LINKS
 10" FIR - S28°W 18 LINKS

1921 - HUTCHINSON RAN THE NORTH LINE OF SECTION 19, HE HAD 36.20 CHAINS (2389.20') ALONG THE NE 1/4.

2013 - WE LOCATED A FENCE LINES AT THE NORTH 1/4 AND AT THE NE CORNER AND MATCHED HIS DISTANCES. WE SET A 2" X 30" ALUM CAP MONUMENT AT THE FENCE LINE INTERSECTION



SECTION 19
 TOWNSHIP 32 NORTH, RANGE 9 EAST
 TOWN OF VILAS
LANGLADE COUNTY, WISCONSIN

CORNER WAS: (CHECK ALL THAT APPLY)

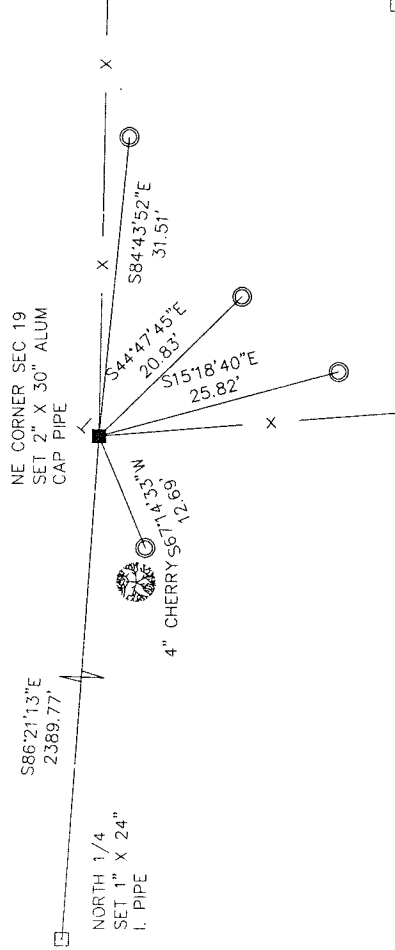
- RESTORED THROUGH ACCEPTANCE OF AN OBLITERATED EVIDENCE LOCATION
- RESTORED THROUGH ACCEPTANCE OF A FOUND PERPETUATED LOCATION
- CONSIDERED A LOST CORNER AND REESTABLISHED THROUGH LOST CORNER PROPORTIONATE METHODS (INCLUDE A PLAN VIEW DRAWING SHOWING DISTANCES AND DIRECTIONS TO OTHER PUBLIC LAND SURVEY CORNERS USED FOR PROPORTIONING AND DETERMINING THE CORNER LOCATION)
- RESTORED OR REESTABLISHED IN A LOCATION THAT DIFFERS FROM A PREVIOUS RESTORATION OR REESTABLISHMENT (INCLUDE A PLAN VIEW DRAWING AND INDICATE WHAT WAS SET AND/OR FOUND)
- CHECK IF THERE IS ADDITIONAL INFORMATION ON BACK

DESCRIBE THE MONUMENT AND ACCESSORIES USED TO PERPETUATE THE LOCATION OF THE CORNER. (INCLUDE A PLAN VIEW DRAWING AND INDICATE WHAT WAS SET AND/OR FOUND) ALSO INCLUDE FOUR TIES TO THE SECTION CORNER AND DESCRIPTION OF THE TIES.

SET 3/4"X18" I. PIPES AT ALL TIE LOCATIONS

BEARINGS ARE REFERENCED TO THE LANGLADE COUNTY COORDINATE SYSTEM

CORNER IS ABOUT 125' WEST OF CREEK AND 30' SOUTH OF TRAIL



CHARLEY G. BRINKMEIER

(Type or print name) CERTIFY THAT THE CORNER LOCATION SHOWN ON THIS RECORD WAS DETERMINED BY ME OR UNDER MY DIRECTION AND CONTROL AND THAT THIS U.S. PUBLIC LAND SURVEY MONUMENT RECORD IS CORRECT AND COMPLETE TO THE BEST OF MY KNOWLEDGE AND BELIEF.

Charley G. Brinkmeier
 SIGNATURE

12-18-13
 DATE

