

CERTIFIED LAND CORNER RESTORATION

Index No. N-7

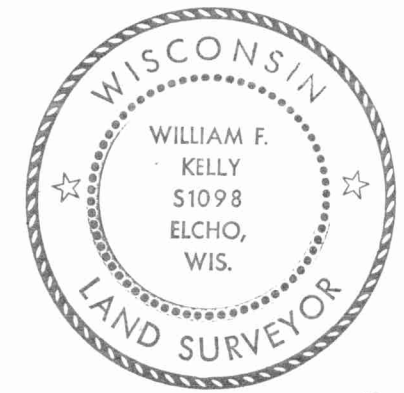
State of Wisconsin }
County of LANGLADE } ss.

I WILLIAM F. KELLY, do hereby certify that on the 1st day of JUNE, 1981, I found evidence of the SOUTH 1/4 corner of SECTION 17 Township 32, North, Range 9 EAST, Fourth Principal Meridian, as described hereon; and that from this evidence I established a new monument and accessories as described hereon to perpetuate the original location of this corner.

Resident witnesses:

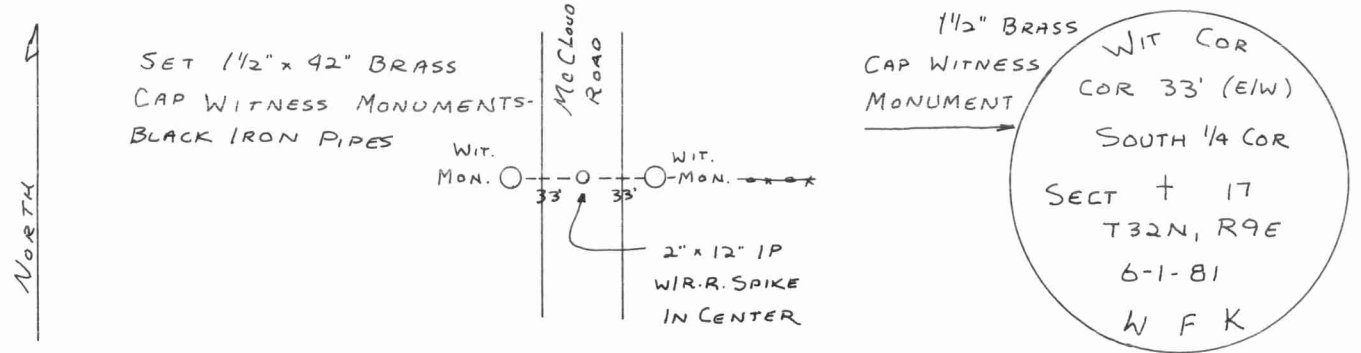
History of original corner establishment:
ORIGINAL CORNER ESTABLISHED
BY HIRAM C. FELLOWS IN SEPT., 1860

Description of corner evidence found:
CORNER SET AT FENCE INTERSECTION
BY PAROLE EVIDENCE.

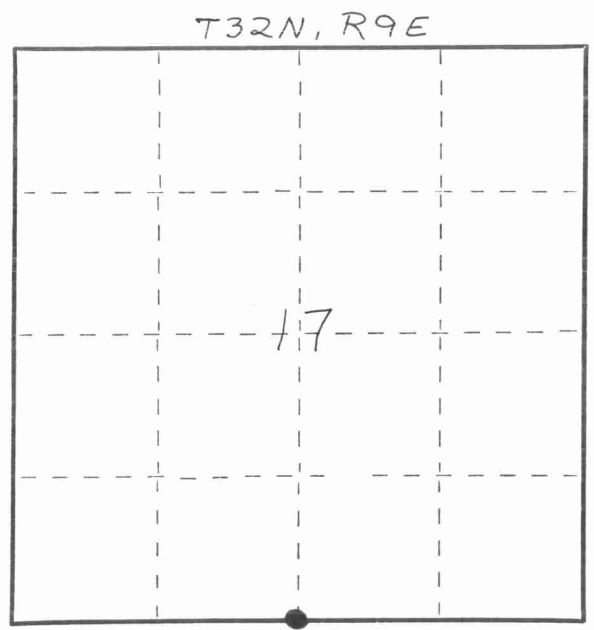


William F. Kelly

Description of monument and accessories I established to perpetuate the original location of this corner.



FORM 985 H. C. MILLER CO., MILWAUKEE



○ = Corner monument restored.

Dated at ELCHO, Wis., this 2ND day of JUNE, 1981.

Signature William F. Kelly Title COUNTY SURVEYOR Registration No. 1098
(County Surveyor, Registered Land Surveyor, or other duly authorized official)

Office of Register of Deeds, County of _____, I hereby certify that the within instrument was filed in this office for record on the _____ day of _____, 19____ at _____ o'clock _____ M.

(Register of Deeds)

By _____ Deputy