

4320914 0020

U.S. PUBLIC LAND SURVEY MONUMENT RECORD

(Prepared and as required by S. A-E 7.08 WI Administrative Code)

The SOUTH 1/4 corner of Section 14, T. 32 N., R. 9 E., Langlade County, WI
Corner was (check all that apply)

- Restored through acceptance of an obliterated evidence location.
- Restored through acceptance of a found perpetuated location.
- Determined to be lost and re-established through proportionate methods. (show bearings and distances to PLSS corners used for proportioning.)
- Restored/recovered/re-established in a location that differs from a previously established position. (Show difference in plan view below.)
- Check here if additional information is shown on the reverse side of this form.

Describe record evidence, recovered physical evidence, occupational evidence, testimonial evidence, and all other evidence considered in the recovery/restoration of the corner.

Original - September 1860, Govt. Surveyor Fellows set corner post and marked BTs: Fir 8", N20°E, 5 links; and Sugar 6", S10°W, 31 links.

April 1912 - Hutchinson (FB 94 P102), found both original Bearing Trees one lying down, only the species of tree and course matched original notes. Set 10" x 14" stone with + in the top, 20 links from Fir and 44 1/2 links from sugar and created one new BT, Elm 12", S28°W, 48 links.

May 2000 - Nutter found no evidence of the original 1/4 corner or Hutchinson's 1912 perpetuation. He set a 2" x 30" iron pipe with a 3" brass cap Langlade County monument at the intersection of fence lines running to the North and to the East. Set rebar ties: N23°E, 10.40'; N76°W, 2.65'; S40°W, 19.73'; and S56°E 42.30' and tied to the SE corner of Section 14 (a gearheaded spike) S87°55'19"E, 2455.20'. His position of the SE corner was later found to be in error (see Tie Sheet).

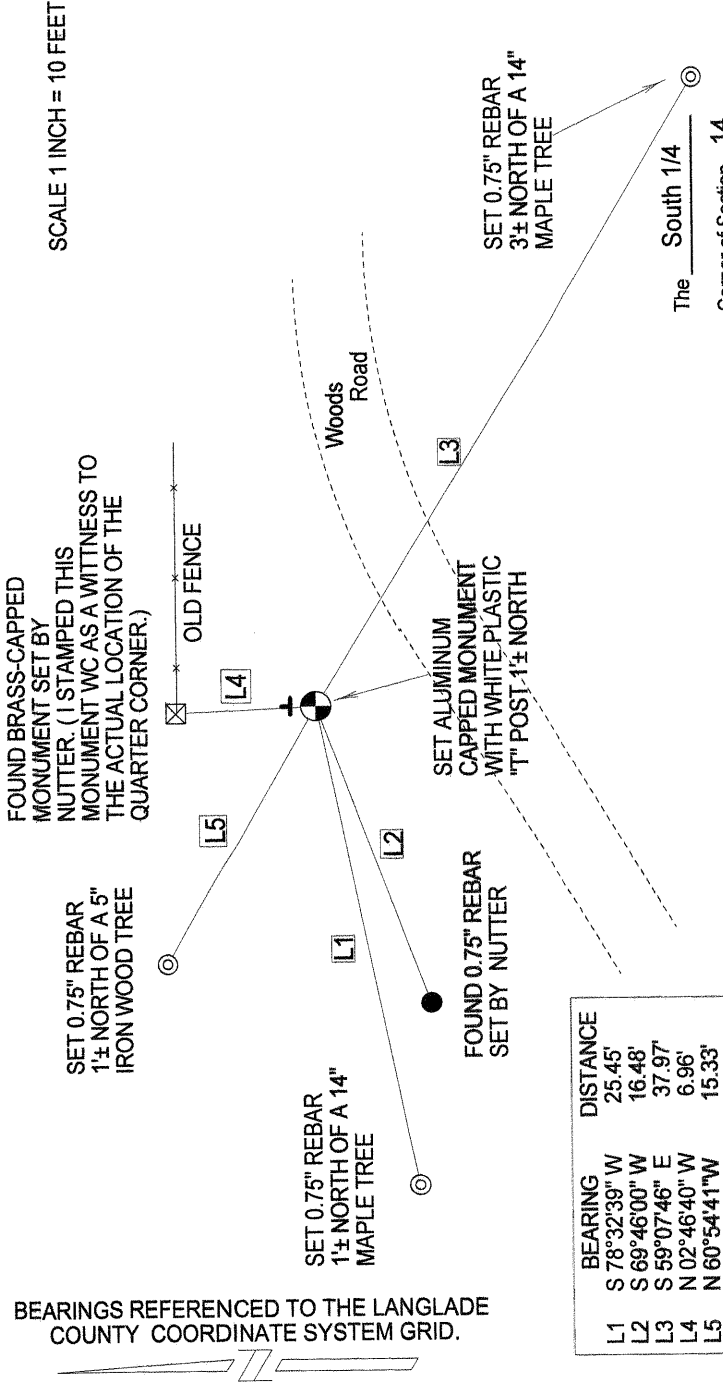
May 2008 - County Surveyor Dave Tlusty and I dug for the stone Hutchinson set. While digging at a calculated search area South of Nutters 1/4 corner, we found a well point about 2.5 feet below the surface.

I believe the well point to be the best available evidence of the original corner location.

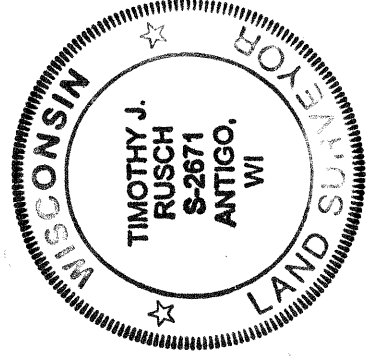
Physical description of the monument set:

August 2009 - I set an aluminum capped Langlade County monument over the well point and set three new rebar ties. Tied out the corner as shown below.

Describe the accessories used to perpetuate the location of the corner. Include a plan view drawing and indicate accessories found/set. Describe measuring point on bearing trees. Show any topographic features that would aid in future recovery of the corner.



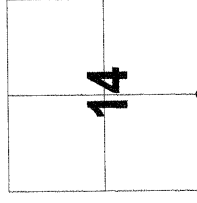
SURVEYORS SEAL



I, Timothy J. Rusch certify that the corner location shown on this record was determined by me or under my direction and control and that this U.S. Public Land Survey Monument Record is correct and complete to the best of my knowledge and belief.

Timothy J. Rusch 09/25/2009 Date
Signature

INDEX No. **N 19** (32-9)



o = Location of corner