

# U.S. PUBLIC LAND SURVEY MONUMENT

(Prepared and as required by S. A-E 7.08 WI Administrative Code)

The SOUTH 1/4 corner of Section 14, T. 32 N., R. 9 E., Langlade County, WI  
3209140020

### Corner was: (check all that apply)

- Restored through acceptance of an obliterated evidence location.
- Restored through acceptance of a found perpetuated location.
- Determined to be a lost and re-established through proportionate methods.  
(Show bearings and distances to PLSS corners used for proportioning.)
- Restored/recovered/reestablished in a location that differs from a previously established position. (Show difference in plan view below.)
- Check here if additional information is shown on the reverse side of this form.

**Describe record evidence, recovered physical evidence, occupational evidence, testimonial evidence and all other evidence considered in the recovery/restoration of the corner.**

ORIGINAL CORNER ESTABLISHED BY HIRAM C. FELLOWS IN SEPT, 1860  
SET POST WITH B.T.'S  
15" ELDER N30°W, 11 LKS.  
12" HEMLOCK S46°W, 23 LKS.

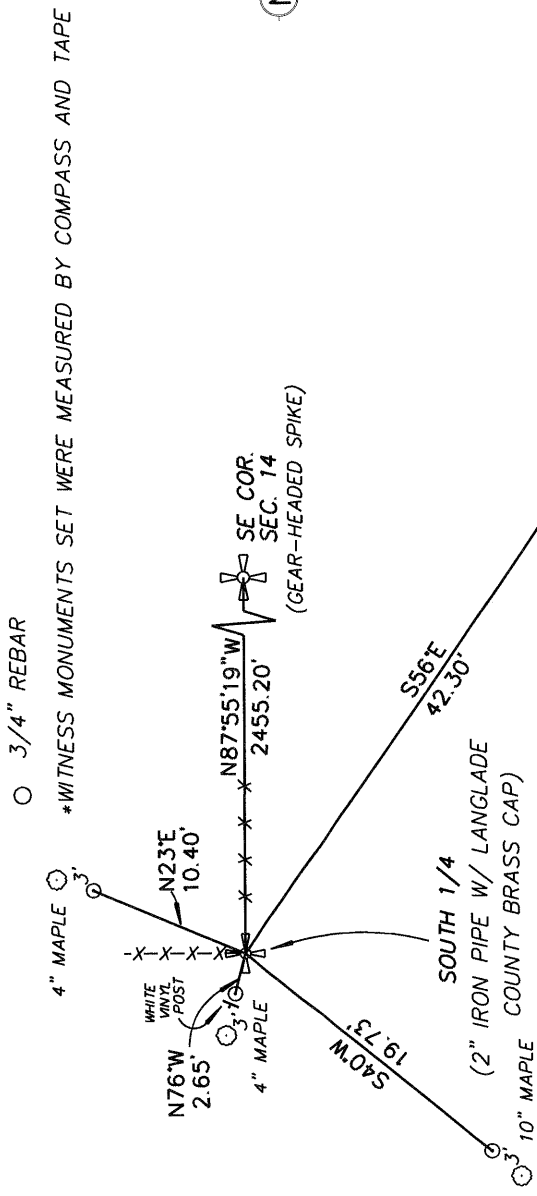
REVISITED IN 1912 BY UNKNOWN SURVEYOR WHO FOLLOWED STEPS OF DUCHAC,  
SET 10"x10"x14" STONE WITH B.T.  
B.T.'S FROM PRIOR SURVEY  
12" NEW ELM S28°W, 46 LKS.  
FIR 20 LKS. (NO SIZE OR BEARING)  
SUGAR 44-1/2 LKS. (NO SIZE OR BEARING)

FOUND NO EVIDENCE OF STONE OR B.T.'S PREVIOUSLY ESTABLISHED. SET 2"  
IRON PIPE WITH LANGLADE COUNTY BRASS CAP AT INTERSECTION OF FENCE  
LINE TO THE NORTH AND EAST AS BEST AVAILABLE EVIDENCE.

### Physical description of the monument set:

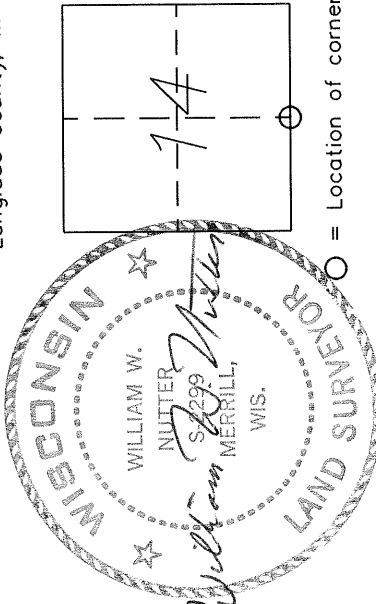
2"x 30" IRON PIPE W/ 3" LANGLADE COUNTY BRASS CAP

Describe the accessories used too perpetuate the location of the corner. Include a plan view drawing and indicate accessories found/set. Describe measuring point on bearing trees. Show any topographic features that would aid in future recovery of the corner.



The SOUTH 1/4  
corner of Section 14  
T. 32 N., R. 9 E.  
Langlade County, WI

INDEX No. N 19



I, William W. Nutter, R.L.S., certify that the corner location shown on this record was determined by me or under my direction and control and that this U.S. Public Land Survey Monument Record is correct and complete to the best of my knowledge and belief.

William W. Nutter, S-2299 7-21-00  
Signature Date