

4 32 09 14 0000

# U.S. PUBLIC LAND SURVEY MONUMENT RECORD

(Prepared and as required by S. A-E 7.08 WI Administrative Code)

The SOUTHEAST corner of Section 14, T. 32 N., R. 9 E., Langlade County, WI  
Corner was (check all that apply)

- Restored through acceptance of an obliterated evidence location.
- Restored through acceptance of a found perpetuated location.
- Determined to be lost and re-established through proportionate methods. (show bearings and distances to PLSS corners used for proportioning.)
- Restored/recovered/re-established in a location that differs from a previously established position. (Show difference in plan view below.)
- Check here if additional information is shown on the reverse side of this form.

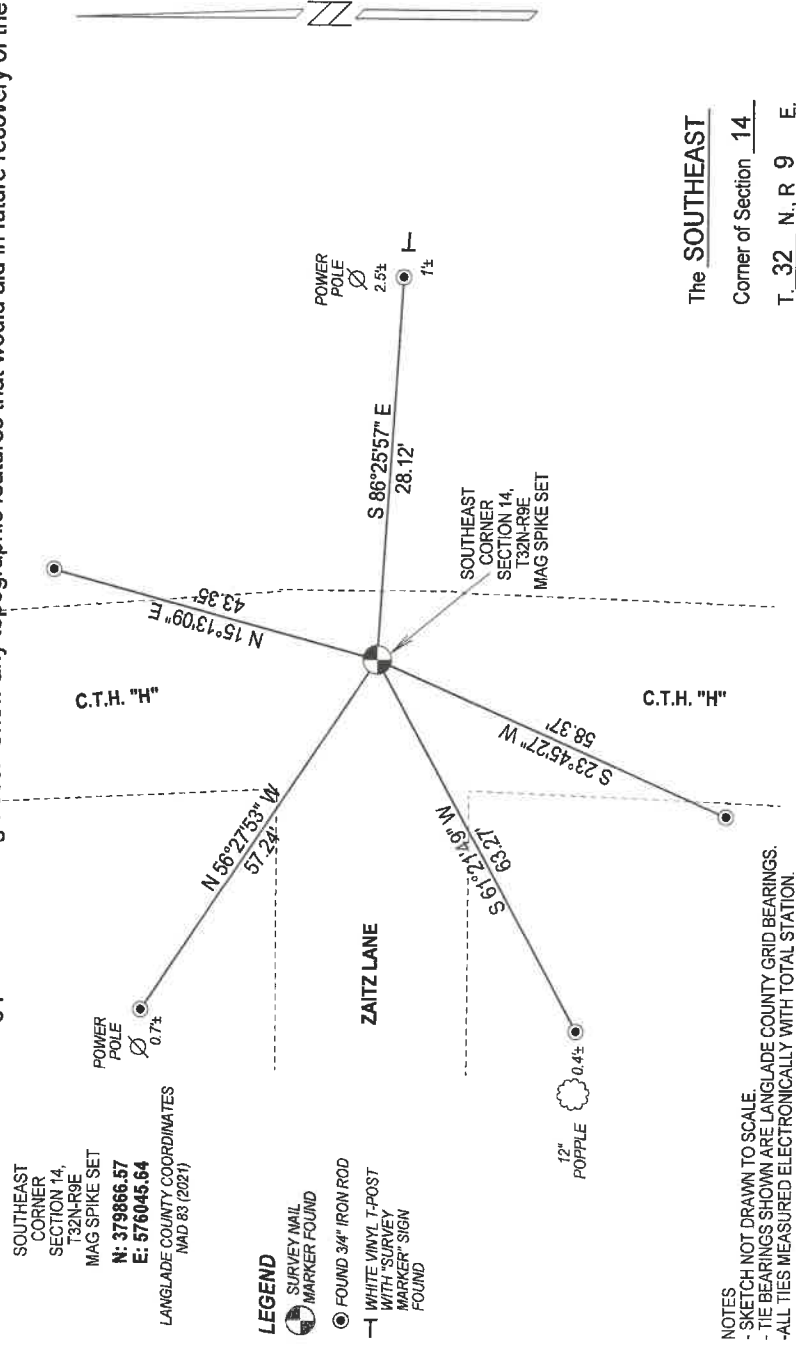
### Describe record evidence, recovered physical evidence, occupational evidence, testimonial evidence, and all other evidence considered in the recovery/restoration of the corner.

1860 - Original corner established by H.C. Fellows - bearing trees: Hemlock, 8", S37°W, 40 links and a Birch, 18", N80°E, 18 links.  
 1912 - Hutchinson described this corner "stake set by Duchac and pine stump for witness, P. stump, 24" S53 1/2°E, 58 links. Stone 4x5x12 with "x".  
 2000 - W. Nutter "set gear headed spike in line with fence to East at record distance from the South 1/4 corner, Section 14, to the West."  
 2006 - D. Tlusty "dug with County backhoe at c-l intersection. At 2.5' below road surface, in very wet ground, found a portion of a pointed wood stake, 2-1/2" x 3-1/2" x 20" long, in an obvious mound of stones. Found several stones of the size called for but nothing with a "x" chiseled on. Accepted the wood stake found as the "stake set by Duchac" and as the best evidence of the original corner location. The corner falls on the tangent centerlines of C.T.H. "H" running north and south, and in-line with the center of Zaitz Lane running West. Spike set by Nutter is N82°09'40"W, 10.6' from wood post found."  
 2022 - Prior to road construction summer 2022, I found the nail set by Tlusty, verified corner location from ties. Set a mag spike at the corner location and tied out as shown below.

### Physical description of the monument set:

Set a mag spike at corner location and tied it out as shown below.

Describe the accessories used to perpetuate the location of the corner. Include a plan view drawing and indicate accessories found/set. Describe measuring point on bearing trees. Show any topographic features that would aid in future recovery of the corner.



NOTES  
 - SKETCH NOT DRAWN TO SCALE.  
 - TIE BEARINGS SHOWN ARE LANGLADE COUNTY GRID BEARINGS.  
 - ALL TIES MEASURED ELECTRONICALLY WITH TOTAL STATION.

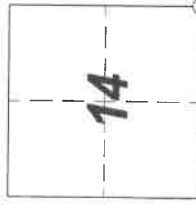
The SOUTHEAST  
 Corner of Section 14  
 T. 32 N., R. 9 E.  
 Langlade County, WI

SURVEYORS SEAL



I, Michael J. Hoffman certify that the corner location shown on this record was determined by me or under my direction and control and that this U.S. Public Land Survey Monument Record is correct and complete to the best of my knowledge and belief.

Michael J. Hoffman 12/12/2022  
 Signature Date



○ = Location of corner

# LANGLADE COUNTY U.S. PUBLIC LAND CORNER RESTORATION

**The Southeast corner of Section 14, T. 32 N., R. 9 E., Langlade County, WI.**

**Corner was: (check all that apply)**

4320914 0000

- Restored through acceptance of an obliterated evidence location.
- Restored through acceptance of a found perpetuated location.
- Determined to be lost and re-established through proportionate methods.
- Show bearings and distances to PLSS corners used for proportioning, and show original distances).
- Restored/recovered/re-established in a location that differs from a previously established position.
- (Show difference in plan view below).
- Check here if additional information is shown on the reverse side of this form.

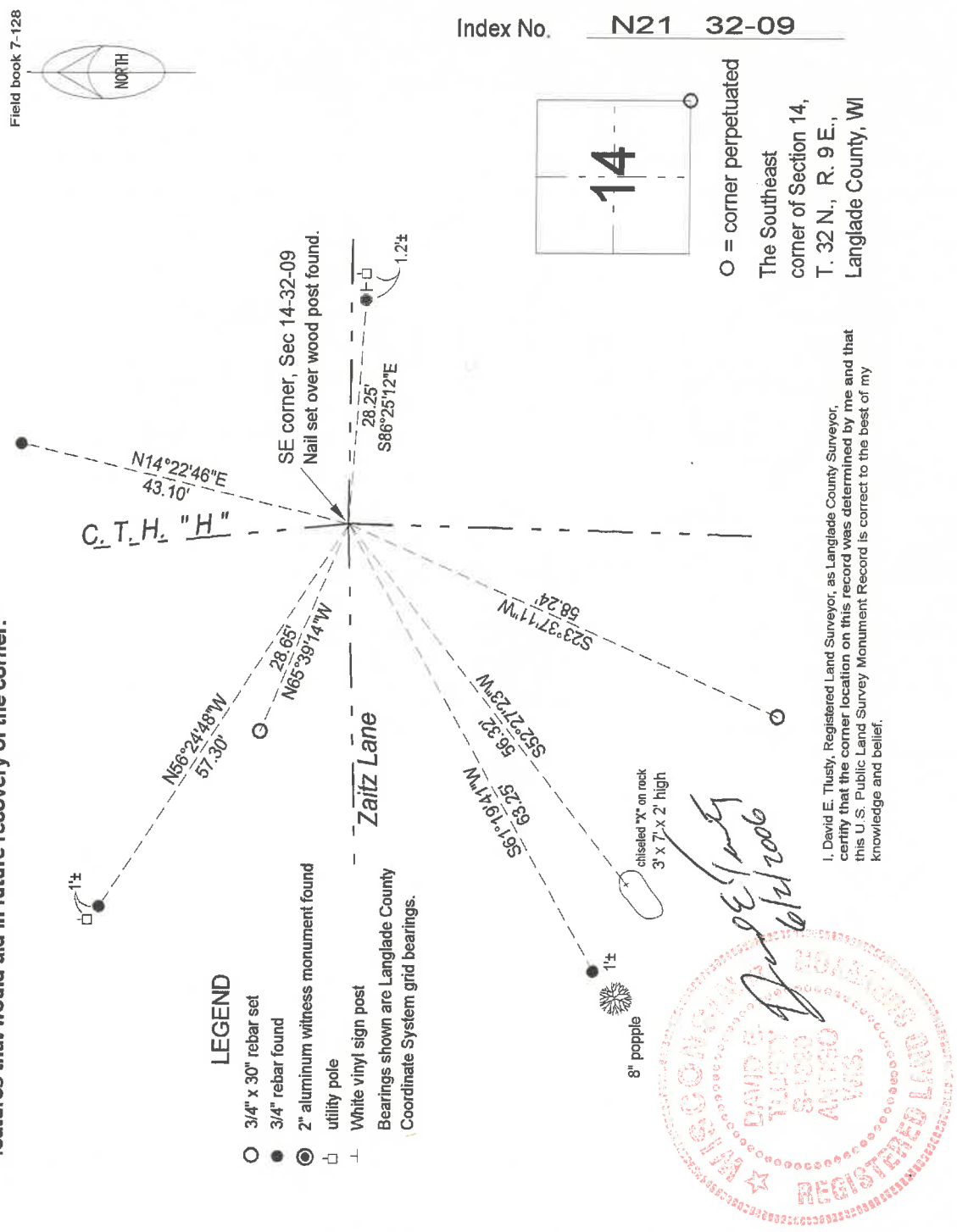
**Describe record evidence, recovered physical evidence, occupational evidence, testimonial evidence and all other evidence considered in the recovery/restoration of the corner.**

The original corner was established in 1860 by H.C. Fellows. Original bearing trees: hemlock, 8", S37°W, 40 links and a birch, 18", N80°E, 18 links. In 1912, Hutchinson described the corner: "Stake set by Duchac and pine stump for witness. {P. stump, 24", S53 1/2°E, 58 links. Stone 4 x 5 x 12 with +"} In July, 2000, William W. Nutter, S-2299, "Set gear-headed spike in line with fence to the East at record distance from the South 1/4 corner, Section 14, to the West". 05/16/06 Dave Tlusty, Jason Thom, dug with County backhoe at c-l intersection. At 2.5' below road surface, in very wet ground, found a portion of a pointed wood stake, 2 1/2" x 3 1/2" x 20" long, in an obvious mound of stones. found several stones of the size called for but nothing with a "+" chiseled on. Accepted the wood stake found as the "stake set by Duchac" and as the best evidence of the original corner location. The corner falls on the tangent centerlines of C.T.H. "H" running north and south, and in-line with the center of Zaitz Lane running West. Spike set by Nutter is N 82°09'40" W, 10.6' from wood post found.

**Physical description of the monument set:**

CTH "H" is being paved in the near future. I set a 40d spike as a temporary marker in gravel patch.

**Describe the accessories used to perpetuate the corner. Include a plan view drawing and accessories found/set. Describe measuring point on bearing trees. Show any topographic features that would aid in future recovery of the corner.**

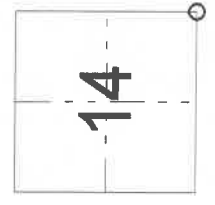


**LEGEND**

- 3/4" x 30" rebar set
  - 3/4" rebar found
  - ⊙ 2" aluminum witness monument found
  - ⊥ utility pole
  - ⊥ White vinyl sign post
- Bearings shown are Langlade County  
Coordinate System grid bearings.



I, David E. Tlusty, Registered Land Surveyor, as Langlade County Surveyor, certify that the corner location on this record was determined by me and that this U.S. Public Land Survey Monument Record is correct to the best of my knowledge and belief.



○ = corner perpetuated  
The Southeast corner of Section 14, T. 32 N., R. 9 E., Langlade County, WI

Index No.     N21 32-09    

Field book 7-128

