

U.S. PUBLIC LAND SURVEY MONUMENT RECORD

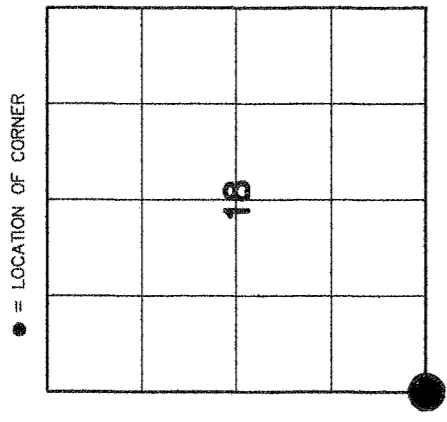
4320913 0000

HISTORY OF ORIGINAL CORNER ESTABLISHMENT AND SUBSEQUENT RESTORATION AND DESCRIPTION OF ANY RECORD, MONUMENT OCCUPATIONAL, TESTIMONIAL OR OTHER EVIDENCE CONSIDERED:

THE ORIGINAL CORNER WAS SET BY FELLOWS IN 1860. THE ORIGINAL BEARING TREES WERE;

- 10" MAPLE S70°W - 23LKS
- 10" MAPLE N60°W - 25LKS
- 9" MAPLE N39°E - 30 LKS
- 10" MAPLE S71°E - 20 LKS

KELLY FOUND A 1-1/4" PIPE AND SET A 2" PIPE IN NOVEMBER 1981. THE POWER POLES HAD RECENTLY BEEN REPLACE AND WE DID NOT FIND THE WITNESS MONUMENT OR THE 2" I. PIPE THAT KELLY SET. WE SET A 1"X24" I. PIPE AT CL + CL. WHICH MATCHED A FORTY FENCE TO THE NORTH.



● = LOCATION OF CORNER

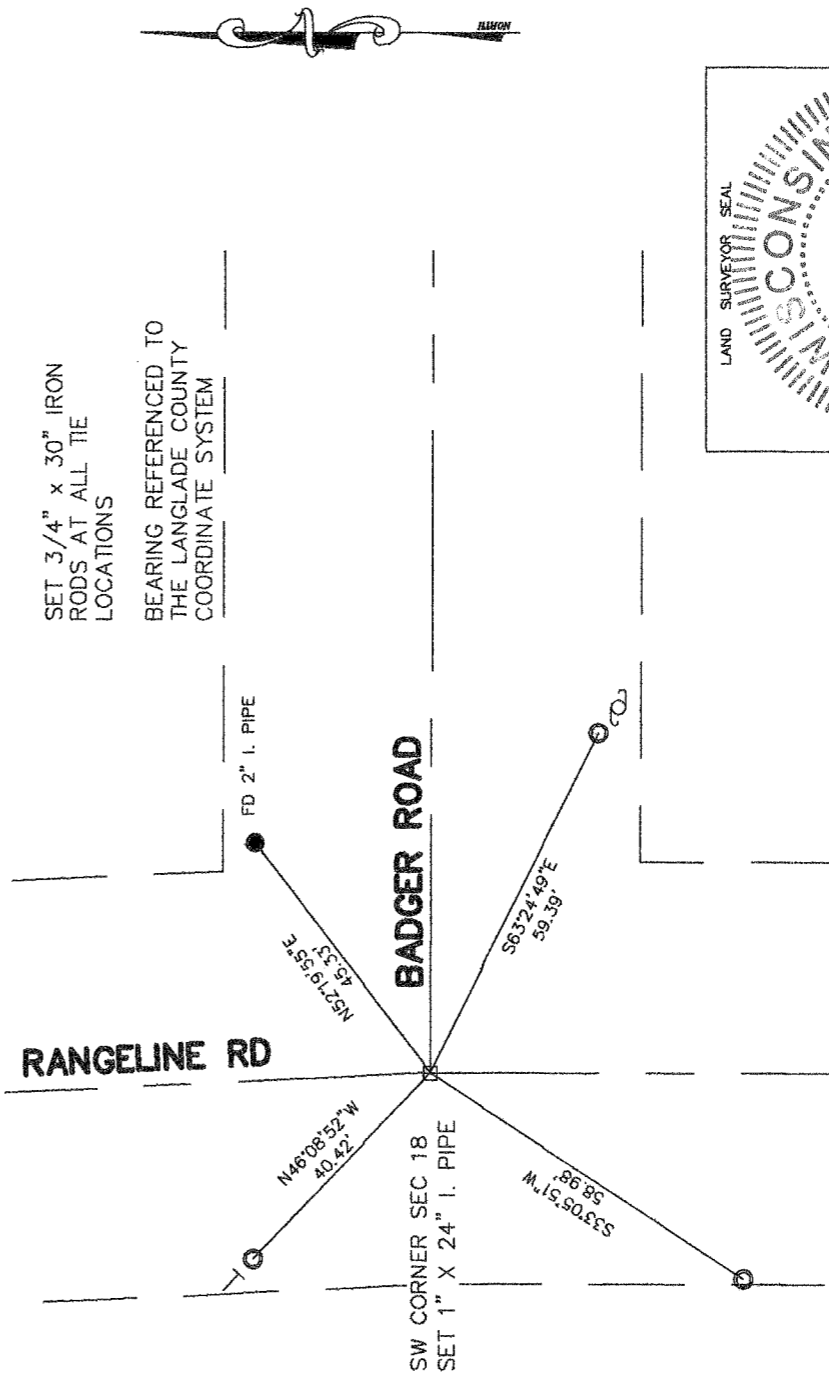
SECTION 18
TOWNSHIP 32 NORTH, RANGE 10 EAST

TOWN OF PECK
LANGLADE COUNTY, WISCONSIN

CORNER WAS: (CHECK ALL THAT APPLY)

- RESTORED THROUGH ACCEPTANCE OF AN OBLITERATED EVIDENCE LOCATION
- RESTORED THROUGH ACCEPTANCE OF A FOUND PERPETUATED LOCATION
- CONSIDERED A LOST CORNER AND REESTABLISHED THROUGH LOST CORNER PROPORTIONATE METHODS (INCLUDE A PLAN VIEW DRAWING SHOWING DISTANCES AND DIRECTIONS TO OTHER PUBLIC LAND SURVEY CORNERS USED FOR PROPORTIONING AND DETERMINING THE CORNER LOCATION)
- RESTORED OR REESTABLISHED IN A LOCATION THAT DIFFERS FROM A PREVIOUS RESTORATION OR REESTABLISHMENT (INCLUDE A PLAN VIEW DRAWING AND INDICATE WHAT WAS SET AND/OR FOUND)
- CHECK IF THERE IS ADDITIONAL INFORMATION ON BACK

DESCRIBE THE MONUMENT AND ACCESSORIES USED TO PERPETUATE THE LOCATION OF THE CORNER. (INCLUDE A PLAN VIEW DRAWING AND INDICATE WHAT WAS SET AND/OR FOUND) ALSO INCLUDE FOUR TIES TO THE SECTION CORNER AND DESCRIPTION OF THE TIES.



RANGELINE RD

BADGER ROAD

SW CORNER SEC 18
SET 1" X 24" I. PIPE

SET 3/4" x 30" IRON
RODS AT ALL TIE
LOCATIONS

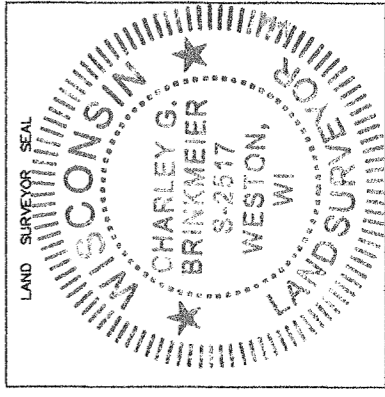
BEARING REFERENCED TO
THE LANGLADE COUNTY
COORDINATE SYSTEM

CHARLEY G. BRINKMEIER

(Type or print name) CERTIFY THAT THE CORNER LOCATION SHOWN ON THIS RECORD WAS DETERMINED BY ME OR UNDER MY DIRECTION AND CONTROL AND THAT THIS U.S. PUBLIC LAND SURVEY MONUMENT RECORD IS CORRECT AND COMPLETE TO THE BEST OF MY KNOWLEDGE AND BELIEF.

Charley G. Brinkmeier
SIGNATURE

11-28-07
DATE



N25 32-09
INDEX NO.