

4320912 2000

# U.S. PUBLIC LAND SURVEY MONUMENT RECORD

(Prepared and as required by S. A-E 7.08 WI Administrative Code)

The EAST 1/4 corner of Section 12, T. 32 N., R. 9 E., Langlade County, WI  
Corner was (check all that apply)

- Restored through acceptance of an obliterated evidence location.
- Restored through acceptance of a found perpetuated location.
- Determined to be lost and re-established through proportionate methods. (show bearings and distances to PLSS corners used for proportioning.)
- Restored/recovered/re-established in a location that differs from a previously established position. (Show difference in plan view below.)
- Check here if additional information is shown on the reverse side of this form.

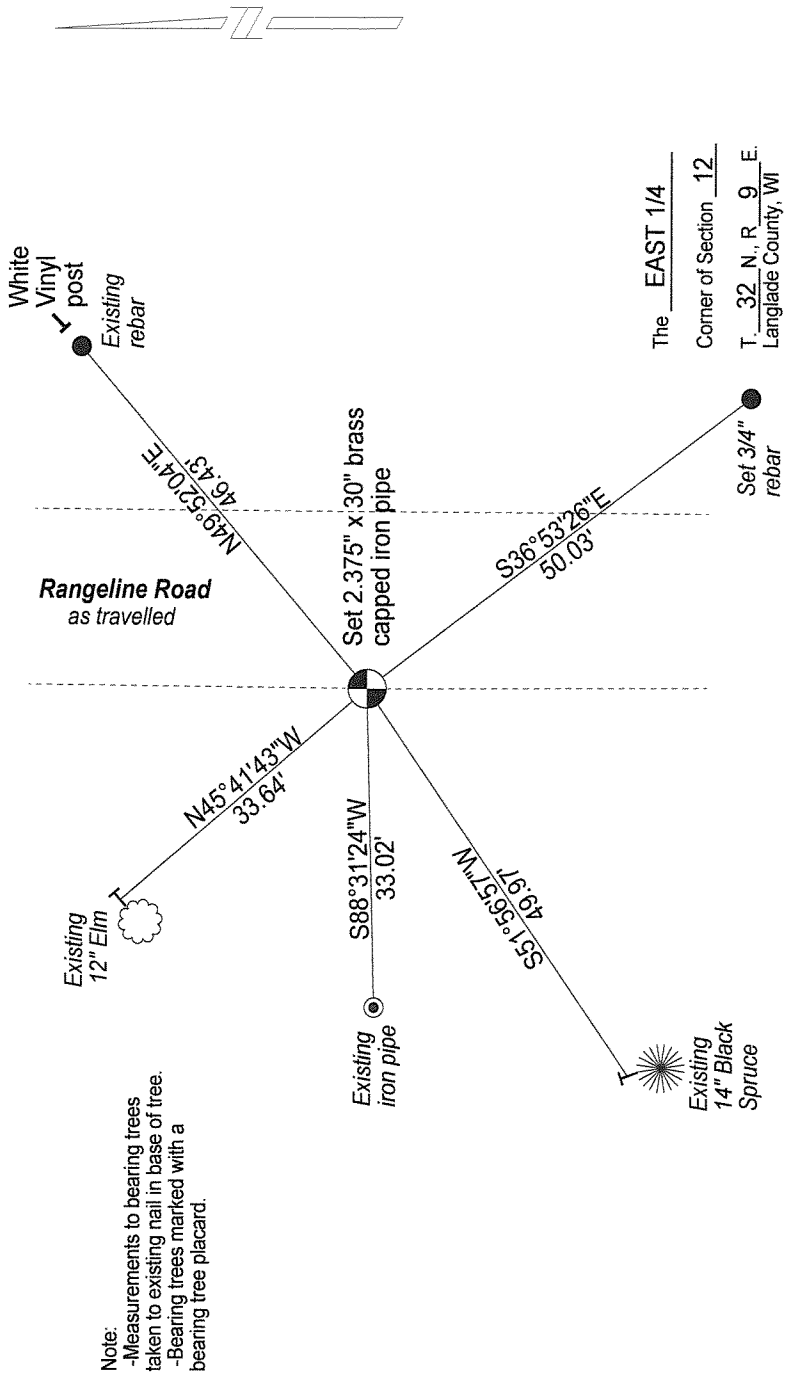
### Describe record evidence, recovered physical evidence, occupational evidence, testimonial evidence, and all other evidence considered in the recovery/restoration of the corner.

June 1859 - H.C. Fellows set original 1/4 section post; Fir 12", S54°W, 51 links; Fir 16", N49°E, 22 links.  
 1965 - George Drivas, Ripco Surveyor, set a reference monument 50 links West of 1/4 corner, while surveying in Section 12 (map #10188 in County Surveyors Office). On Surveyor Barker's 1995 tie sheet (see below), Barker indicated he had access to Drivas' field notes.  
 1995 - Surveyor Barker set a 3/4" x 30" rebar 2" below old road bed surface. Barker found existing reference monument 50 links West of corner and set 4 new ties; Elm 8", N48°W, 33.67 feet; Black Spruce 7", S50°W, 50.00 feet; 3/4" rebar, S35°01'53"E, 38.93 feet; and 3/4" rebar N44°09'51"E, 42.87 feet.  
 2012 - I found no evidence of Barker's 3/4" rebar set for corner. I found 4 of the existing ties shown on Barker's tie sheet and set a brass capped monument 2" below surface.

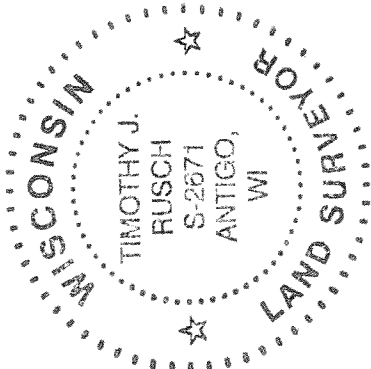
### Physical description of the monument set:

I set a 2.375" x 30" iron pipe with brass cap 2" below surface as the corner, and tied it out as follows.

Describe the accessories used to perpetuate the location of the corner. Include a plan view drawing and indicate accessories found/set. Describe measuring point on bearing trees. Show any topographic features that would aid in future recovery of the corner.

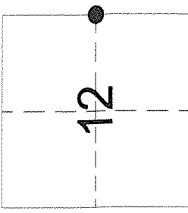


SURVEYORS SEAL



I, Timothy J. Rusch certify that the corner location shown on this record was determined by me or under my direction and control and that this U.S. Public Land Survey Monument Record is correct and complete to the best of my knowledge and belief.

Timothy J. Rusch 06/03/2012  
 Signature Date



● = Location of corner