

U. S. PUBLIC LAND SURVEY MONUMENT RECORD

I N S T R U C T I O N S :

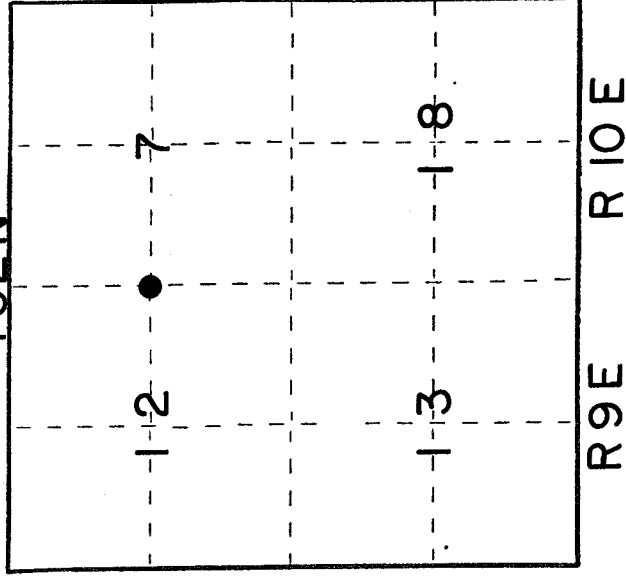
This record shall show the location of the corner and shall include all of the following nine elements (a through i).

(a) Identify the corner by reference to the U.S. public land survey system.

○ = Corner monument restored.

West Quarter Corner of Section 7
Township 32 North, Range 9 & 10 East
Langlade County, Wisconsin

T32N



(b) Describe any record evidence, monument evidence, occupational evidence, testimonial evidence or any other material evidence you considered, and whether the monument was found or placed.

Original corner established in 1859 by Hiram C. Fellow's, Gov't Deputy Surveyor, from which 12" Fir bears S54W - 51 lks and 16" Fir bears N49E - 22 lks.

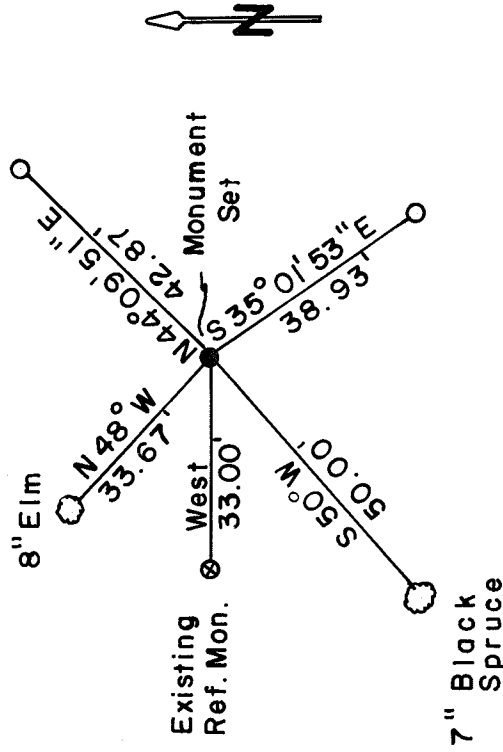
No evidence of G.L.O. corner or accessories.

Found a 2" iron pipe established by George Drivas, Ripco Surveyor in 1965. Iron pipe was set 50 lks west of corner position and west right-of-way line of old abandoned town road. The cap has been removed but in Drivas' field notes he placed this reference monument 50 lks west of quarter corner. Position fits bend in old road.

(c) In the plan view drawing below, provide reference ties to at least 4 witness monuments, or, if the location is within a municipality, to at least 2 witness monuments. (Witness monuments shall be made of concrete, natural stone, iron or other equally durable material.)
Describe witness monuments.

x = set two 3/4" x 30" Rebars
= marked bearing tree

(d) Show a plan view drawing depicting the relevant monuments and reference ties which is sufficient in detail to enable accurate relocation of the corner monument if the corner monument is disturbed. Indicate north.



3/4" x 30" Re-bar
set for corner

2" Below old
road bed

○ Set two 3/4" x 30" Re-bar

◉ Marked bearing tree
Measured to nail in side of tree.

(e) Describe any material discrepancy between the location of the corner as restored or reestablished and the location of that corner as previously restored or reestablished by distance and direction. Show the discrepancy on the plan view drawing under (d), above. Show the distances between the corner as previously restored or reestablished and (1) the corner as restored or reestablished, and (2) to at least 2 of the witness monuments shown on the drawing in (d), above.

In 1965 Drivas subdivided Section 12, T32N-R9E using this position. I can find no other corner in conflict with this position.

Drivas' field notes and map have distance from west quarter corner to southwest section corner 2601.06'. Resurvey of same 2604.24'.

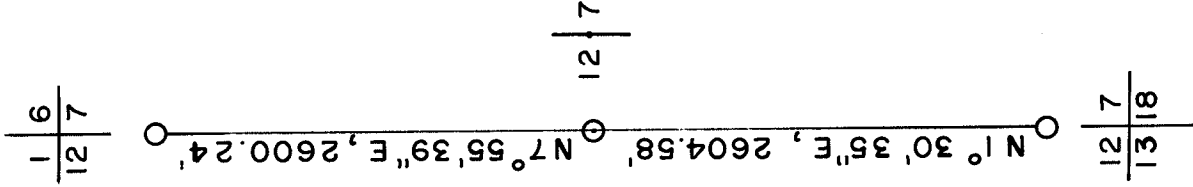
This was accepted as the best available evidence and is harmoniously related to existing conditions in Section 7, T32N-R10E - Section 12, T32N-R9E.

Set a 3/4" x 30" Rebar 50 lks east of recovered reference monument in old road bed and 2" below surface.

(f) Was the corner restored through acceptance of (1) an obliterated evidence location, or, (2) a found perpetuated location?

Perpetuated location

(g&h) Was the corner reestablished through lost corner proportionate methods? If so, show the method, including the directions and distances to other public land survey corners used as evidence or used for proportioning in determining the corner location?



(i) I, Glen Barker (type or print name) certify that the corner location shown on this record was determined by me or under my direction and control and that this U.S. Public Land Survey Monument Record is correct and complete to the best of my knowledge and belief.

Glen Barker

Signature

5/6/95

Date

