

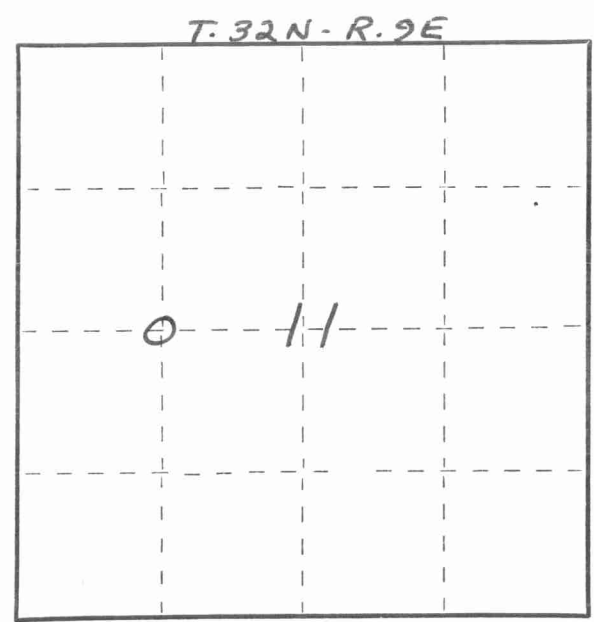
CERTIFIED LAND CORNER RESTORATION

Index No. G-18

State of Wisconsin }  
 County of LANGLADE } ss.

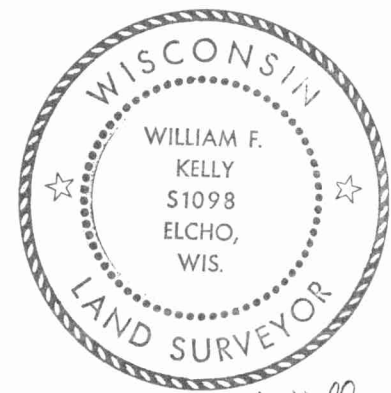
I WILLIAM F. KELLY, do hereby certify that on the 9th day of SEPTEMBER, 19 77, I found evidence of the W 1/8 corner of SECTION 11 Township 32, North, Range 9E, Fourth Principal Meridian, as described hereon; and that from this evidence I established a new monument and accessories as described hereon to perpetuate the original location of this corner.

Resident witnesses:  
 \_\_\_\_\_  
 \_\_\_\_\_  
 \_\_\_\_\_



○ = Corner monument restored.

History of original corner establishment:

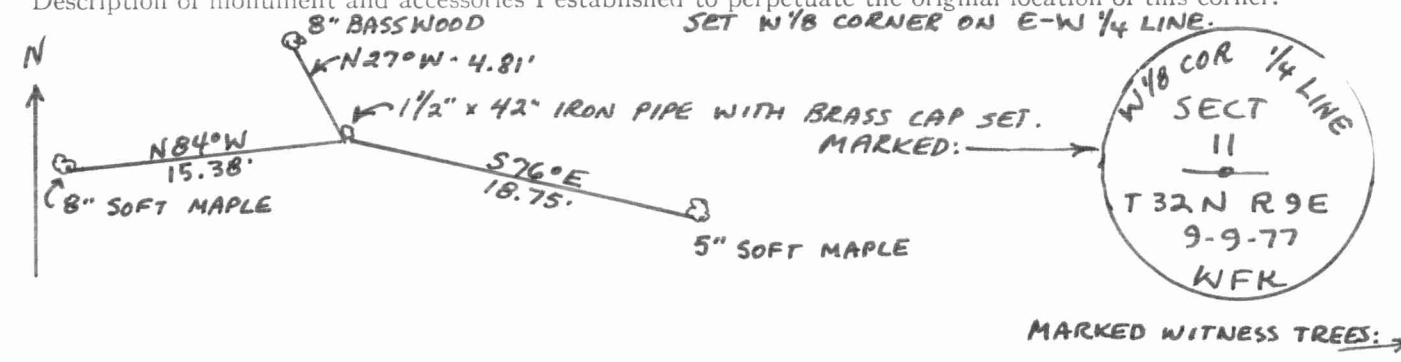


*William F. Kelly 9-9-77*

Description of corner evidence found:

**LOCATED A SQUARED IRON AND AN OLD WITNESS TREE FROM SURVEY RECORDS OF M. HUTCHINSON.**

Description of monument and accessories I established to perpetuate the original location of this corner.



Dated at ELCHO, Wis., this 9th day of SEPTEMBER, 19 77

Signature William F. Kelly Title REGISTERED LAND SURVEYOR Registration No. 51098  
 (County Surveyor, Registered Land Surveyor, or other duly authorized official)

Office of Register of Deeds, County of \_\_\_\_\_, I hereby certify that the within instrument was filed in this office for record on the \_\_\_\_\_ day of \_\_\_\_\_, 19 \_\_\_\_\_ at \_\_\_\_\_ o'clock \_\_\_\_\_ M.

\_\_\_\_\_  
 (Register of Deeds)  
 By \_\_\_\_\_ Deputy

FORM 983 H. C. MILLER CO., MILWAUKEE