

4320911 0000

U.S. PUBLIC LAND SURVEY MONUMENT RECORD

(Prepared and as required by S. A-E 7.08 WI Administrative Code)

The SOUTHEAST corner of Section 11, T. 32 N., R. 9 E., Langlade County, WI
Corner was (check all that apply)

- Restored through acceptance of an obliterated evidence location.
- Restored through acceptance of a found perpetuated location.
- Determined to be lost and re-established through proportionate methods. (show bearings and distances to PLSS corners used for proportioning.)
- Restored/recovered/re-established in a location that differs from a previously established position. (Show difference in plan view below.)
- Check here if additional information is shown on the reverse side of this form.

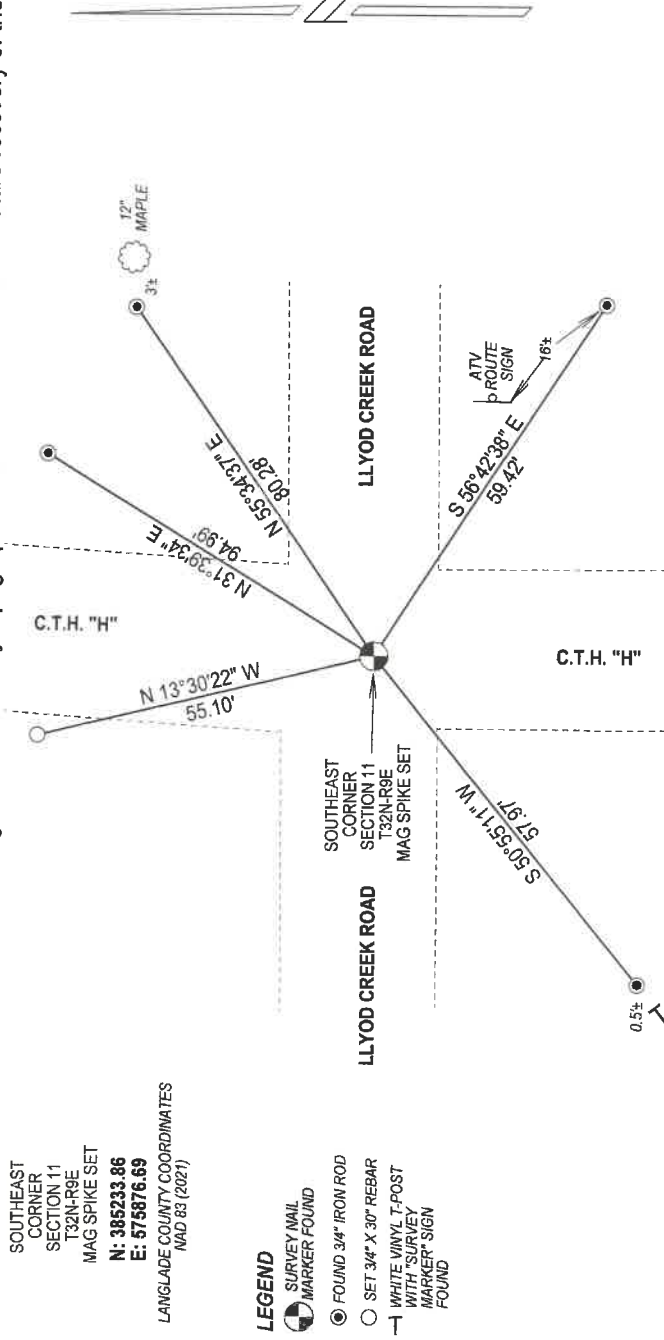
Describe record evidence, recovered physical evidence, occupational evidence, testimonial evidence, and all other evidence considered in the recovery/restoration of the corner.

1860 - Original corner established by H.C. Fellows - bearing trees: Lind, 12", S51°E, 33 links and a Elm, 8", N83°E, 20 links.
 1912 - Hutchinson called the corner a "stone set by Mitmore".
 1986 - W. Kelly "located old iron pipe probably set by Hutchinson in 1930's." He set new witness monument, marked BT's and set a RR spike over existing iron in the road.
 2006 - D. Tlusty "found a railroad spike at the surface of the road. Removed railroad spike and found another railroad spike, 6" below the surface spike found. Removed 2nd railroad spike but found not other metal objects." "Dug with County backhoe and found one, lone 15" x 20" x 12" stone, down 2.7 feet below the road and at apparent CL-CL point. As Hutchinson note on the corner was 1914 and Mitmore's work was prior to that, it is likely that Mitmore had some evidence of the original corner set in 1860, therefore I accept this stone as the stone mentioned by Hutchinson and as best evidence of a long standing perpetuation of the corner."
 2022 - Prior to road construction summer 2022 I found the iron pipe set by Tlusty. I set a mag spike at the corner location after completion of roadwork.

Physical description of the monument set:

Set a mag spike at corner location and tied it out as shown below.

Describe the accessories used to perpetuate the location of the corner. Include a plan view drawing and indicate accessories found/set. Describe measuring point on bearing trees. Show any topographic features that would aid in future recovery of the corner.



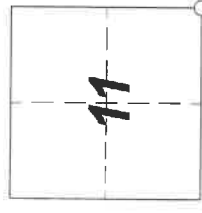
LANGLADE COUNTY COORDINATES
NAD 83 (2011)

LEGEND

- SURVEY NAIL
- MARKER FOUND
- FOUND 3/4" IRON ROD
- SET 3/4" X 30" REBAR
- WHITE VINYL T-POST WITH "SURVEY MARKER" SIGN FOUND

NOTES
 - SKETCH NOT DRAWN TO SCALE.
 - TIE BEARINGS SHOWN ARE LANGLADE COUNTY GRID BEARINGS.
 - ALL TIES MEASURED ELECTRONICALLY WITH TOTAL STATION.

The SOUTHEAST
 Corner of Section 11
 T. 32 N., R. 9 E.
 Langlade County, WI



○ = Location of corner



I, Michael J. Hoffman, certify that the corner location shown on this record was determined by me or under my direction and control and that this U.S. Public Land Survey Monument Record is correct and complete to the best of my knowledge and belief.

Michael J. Hoffman 12/12/2022
 Signature Date

LANGLADE COUNTY U.S. PUBLIC LAND CORNER RESTORATION

The Southeast corner of Section 11, T. 32 N., R. 9 E., Langlade County, WI.

Corner was: (check all that apply)

4320911 0000

- Restored through acceptance of an obliterated evidence location.
- Restored through acceptance of a found perpetuated location.
- Determined to be lost and re-established through proportionate methods.
- Show bearings and distances to PLSS corners used for proportioning, and show original distances).
- Restored/recovered/re-established in a location that differs from a previously established position.
- (Show difference in plan view below).
- Check here if additional information is shown on the reverse side of this form.

Describe record evidence, recovered physical evidence, occupational evidence, testimonial evidence and all other evidence considered in the recovery/restoration of the corner.

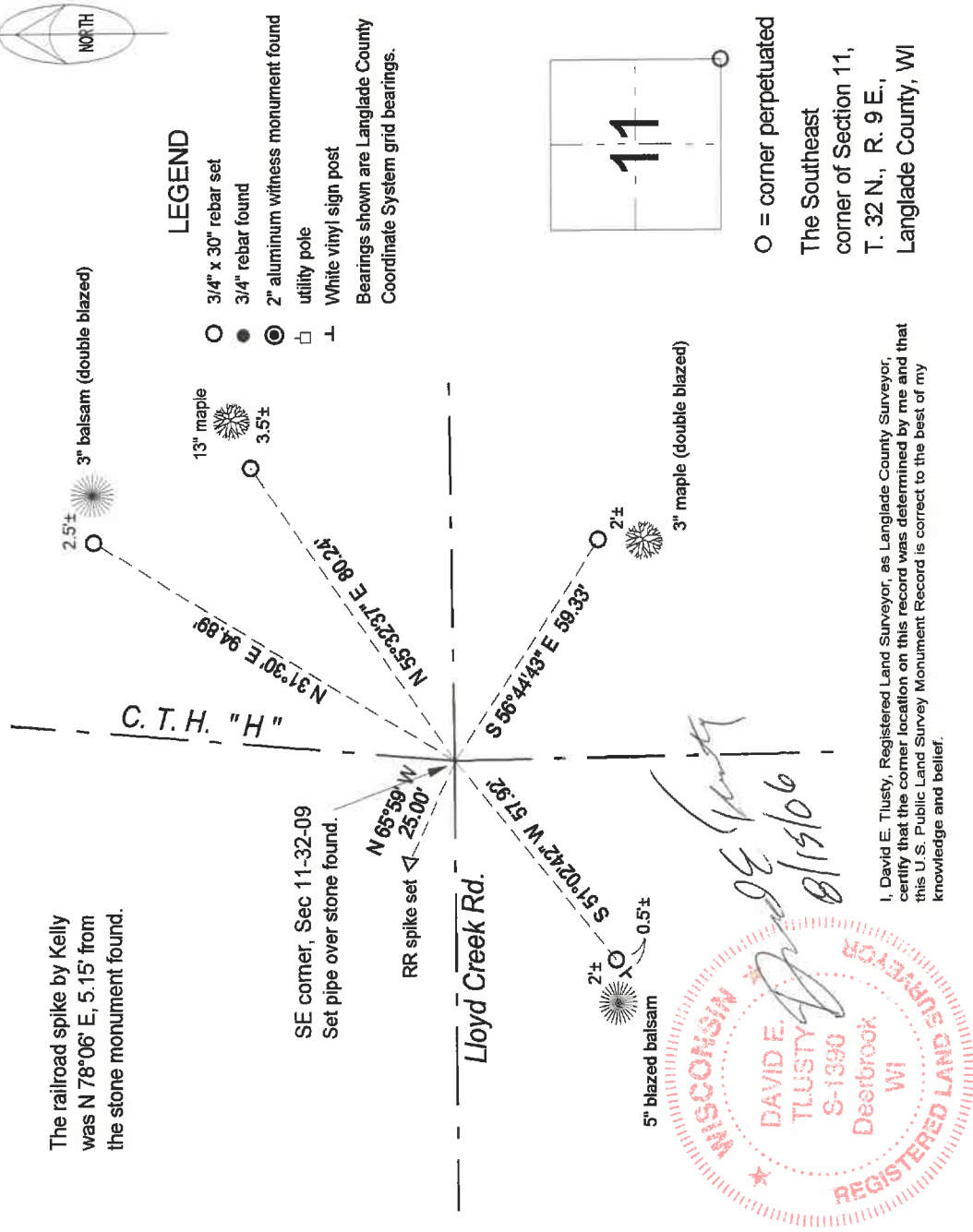
The original corner was established in 1860 by H.C. Fellows. Original bearing trees: lind, 12", S51°E, 33 links and an elm, 8", N83°W, 20 links. In 1914, Hutchinson called the corner a "stone set by Miltimore". In 1986, former surveyor Kelly said "Located old iron pipe probably set by Hutchinson in 1930's". He set new wit. mon. and marked BT's and said he set a RR spike "over exist. iron in road". 05/10/06 D. Tlusty found a railroad spike at the surface of the road. Removed railroad spike and found another railroad spike, 6" below the surface spike found. Removed the 2nd railroad spike but found no other metal obects. 06/16/06 D. Tlusty and Jason Thom dug with County backhoe and found one, lone 15" x 20" x 12" stone, down 2.7 feet below the road and at the apparent CL-CL point. As Hutchinsons note on the corner was 1914 and Miltimores work was prior to that, it is likely that Miltimore had some evidence of the original corner set in 1860, therefore I accept this stone as the stone mentioned by Hutchinson and as the best evidence of a long standing perpetuation of the corner.

Physical description of the monument set:

CTH "H" is being paved in the near future. I set a 1" x 30" iron pipe, 0.4' down in gravel patch.

Describe the accessories used to perpetuate the corner. Include a plan view drawing and accessories found/set. Describe measuring point on bearing trees. Show any topographic features that would aid in future recovery of the corner.

The railroad spike by Kelly was N 78°06' E, 5.15' from the stone monument found.



Field book 7-130

Index No. J21 32-09

○ = corner perpetuated
The Southeast corner of Section 11, T. 32 N., R. 9 E., Langlade County, WI

I, David E. Tlusty, Registered Land Surveyor, as Langlade County Surveyor certify that the corner location on this record was determined by me and that this U.S. Public Land Survey Monument Record is correct to the best of my knowledge and belief.

U. S. PUBLIC LAND SURVEY MONUMENT RECORD

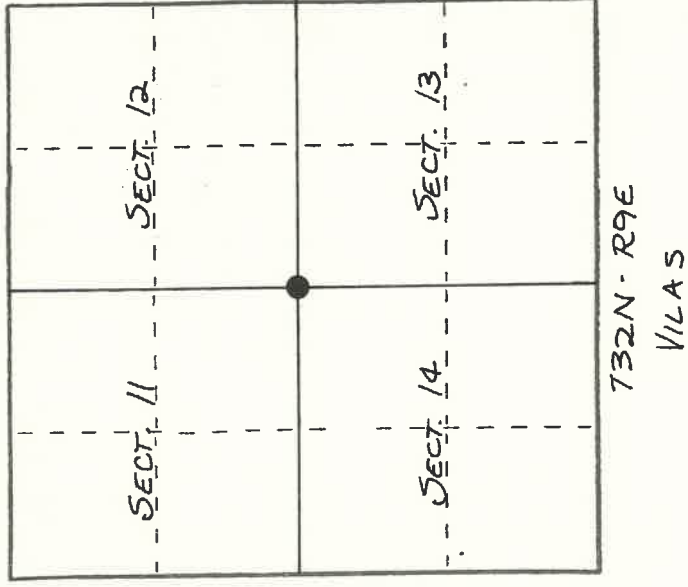
I N S T R U C T I O N S :

This record shall show the location of the corner and shall include all of the following nine elements (a through i).

(a) Identify the corner by reference to the U.S. public land survey system.

O = Corner monument restored.

ORIGINAL CORNER ESTABLISHED BY
H.C. FELLOWS IN SEPT., 1860.



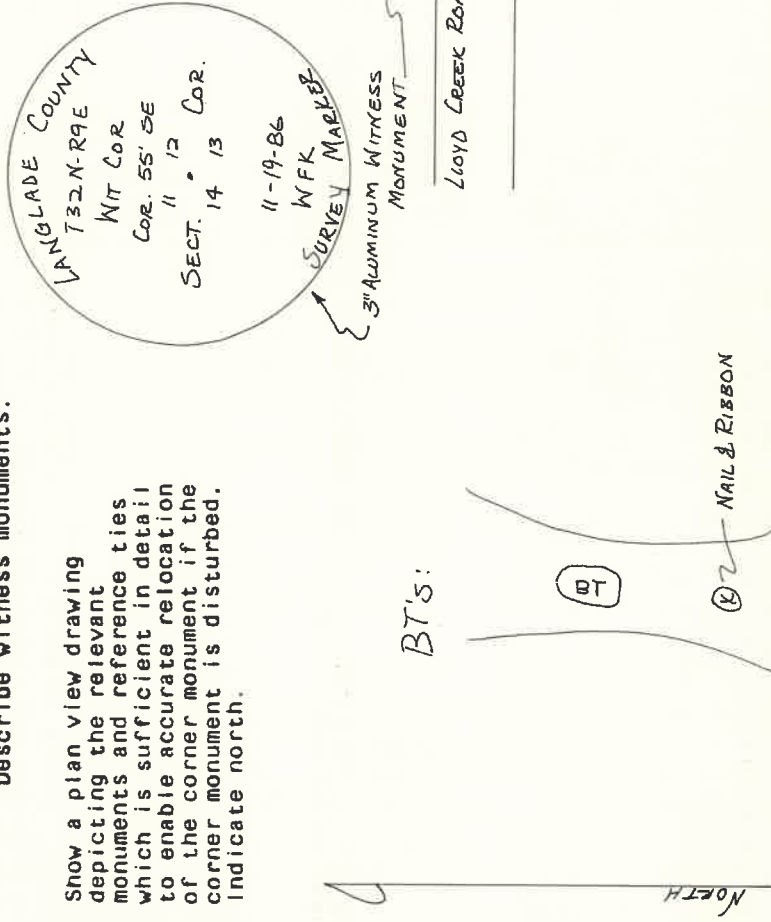
(b) Describe any record evidence, monument evidence, occupational evidence, testimonial evidence, or any other material evidence you considered, and whether the monument was found or placed.

LOCATED OLD IRON PIPE PROBABLY SET BY
HUTCHINSON IN 1930'S.

SET NEW WIT. MON. & MARKED NEW BT'S.

(c) In the plan view drawing below, provide reference ties to at least 4 witness monuments, or, if the location is within a municipality, to at least 2 witness monuments. (Witness monuments shall be made of concrete, natural stone, iron or other equally durable material.) Describe witness monuments.

(d) Show a plan view drawing depicting the relevant monuments and reference ties which is sufficient in detail to enable accurate relocation of the corner monument if the corner monument is disturbed. Indicate north.



TREES SCRUBBED
11-19-86

(e) Describe any material discrepancy between the location of the corner as restored or reestablished and the location of that corner as previously restored or reestablished by distance and direction. Show the discrepancy on the plan view drawing under (d), above. Show the distances between the corner as previously restored or reestablished and (1) the corner as restored or reestablished, and (2) to at least 2 of the witness monuments shown on the drawing in (d), above.

None

(f) Was the corner restored through acceptance of (1) an obliterated evidence location, or, (2) a found perpetuated location?

(2)

(g&h) Was the corner reestablished through lost corner proportionate methods? If so, show the method, including the directions and distances to other public land survey corners used as evidence or used for proportioning in determining the corner location?

No.

(i) 1. WILLIAM F. KELLY R.L.S. 1098
(Type or print name) certify that the corner location shown on this record was determined by me or under my direction and control and that this U.S. Public Land Survey Monument Record is correct and complete to the best of my knowledge and belief.

William F. Kelly
Signature

Date

