

CERTIFIED LAND CORNER RESTORATION

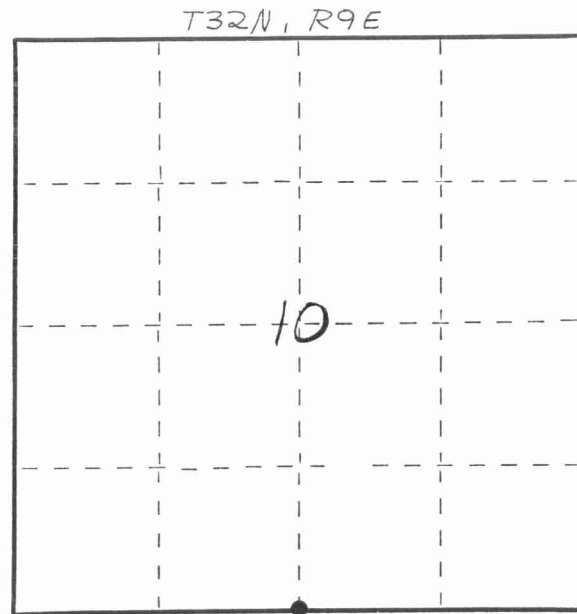
Index No. J-15

State of Wisconsin }  
 County of LANGLADE } ss.

I WILLIAM F. KELLY, do hereby certify that on the 4<sup>th</sup> day of DEC., 1981, I found evidence of the S. 1/4 corner of SEC. 10 Township 32, North, Range 9 EAST, Fourth Principal Meridian, as described hereon; and that from this evidence I established a new monument and accessories as described hereon to perpetuate the original location of this corner.

Resident witnesses:

.....  
 .....  
 .....



○ = Corner monument restored.

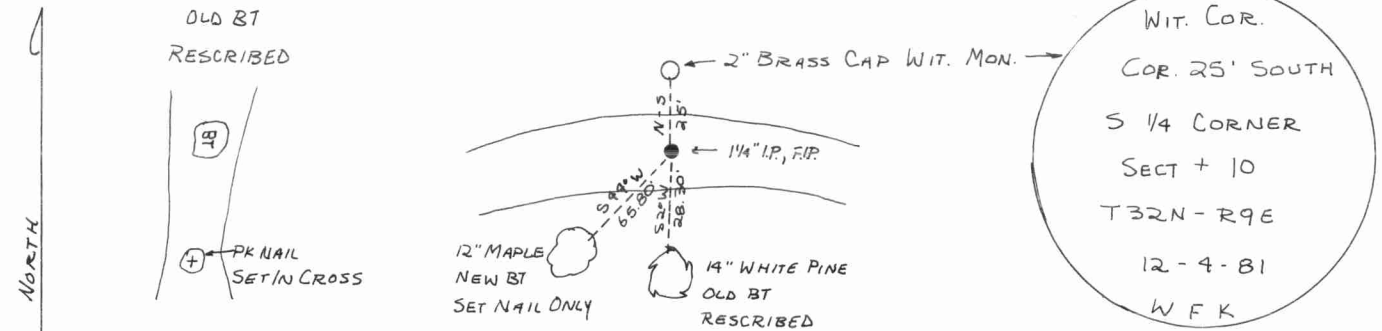
History of original corner establishment:

ORIGINAL CORNER ESTABLISHED BY  
HIRAM C. FELLOWS IN SEPT., 1860.

Description of corner evidence found:

1 1/4" IRON PIPE, FOUND IN PLACE.  
ESTABLISHED 2 WITNESS TREES.  
SET A 2" x 42" BLACK IRON PIPE  
WITH BRASS CAP WITNESS  
MONUMENT.

Description of monument and accessories I established to perpetuate the original location of this corner.



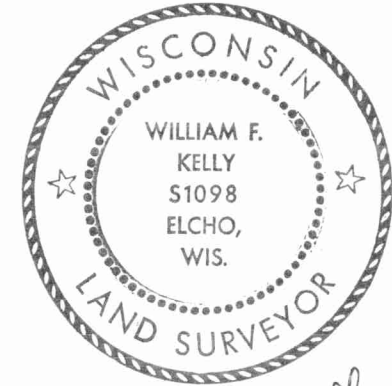
Dated at ELCHO, Wis., this 4<sup>th</sup> day of DEC., 1981.

Signature William F. Kelly Title COUNTY SURVEYOR Registration No. 1098  
 (County Surveyor, Registered Land Surveyor, or other duly authorized official)

Office of Register of Deeds, County of....., I hereby certify that the within instrument was filed in this office for record on the..... day of....., 19..... at..... o'clock..... M.

(Register of Deeds)

By..... Deputy



*William F. Kelly*

FORM 985 H. C. MILLER CO., MILWAUKEE