

# U.S. PUBLIC LAND SURVEY MONUMENT RECORD

Corner was: (check all that apply)  
 (Prepared and as required by S. A-E 7.08 Wi Administrative Code)

- Restored through acceptance of an obliterated evidence location
- Restored through acceptance of a found perpetuated location
- Determined to be lost and reestablished through proportionate methods.  
 (Show bearings and distances to PLSS corners used for proportioning)
- Restored/recovered/reestablished in a location that differs from a previously established position. (Show difference in plan view below.)
- Check here if additional information is shown on the reverse side of this form

Describe record evidence, recovered physical evidence, occupational evidence, testimonial evidence and all other evidence considered in the recovery/restoration of corner.

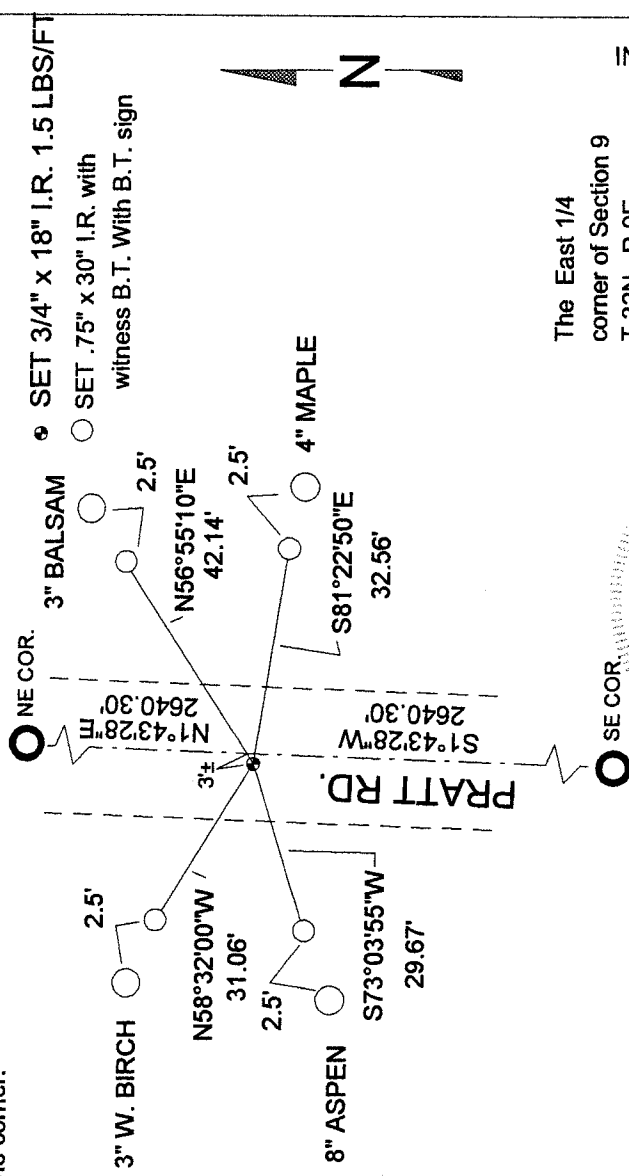
1860 - Original Corner established by Hiram C. Fellows  
 Original BT'S: HEMLOCK 10" N80°W 9 LINKS  
 HEMLOCK 12" S14°E 6 LINKS

2006 - Dean A. Williams, James Gardner and Dave Tlusty found nothing. Set proportionate method.

Physical description of the monument set:

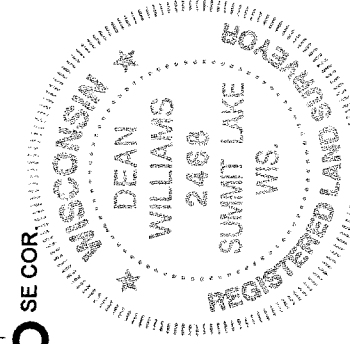
2006 - Dean A. Williams Set a .75" x 24" i.r. for corner. And 4 new i.r.'s with bt sign trees 2.5 feet directly behind i.r.'s.

Describe the accessories used to perpetuate the location of the corner. Include a plan view drawing and indicate accessories found/set. Describe measuring point on bearing trees. Show any topographic features that would aid in future recovery of the corner.

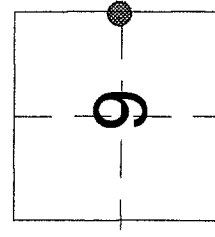


I, Dean A. Williams RLS 2468, certify that the corner location shown on this record was determined by me or under my direction and control and that this U.S. Public Land Survey Record is correct and complete to the best of my knowledge and belief.

*Dean Williams*  
 Signature Date 2/22/06



The East 1/4 corner of Section 9 T.32N., R.9E., Langlade County, WI



INDEX NO. G13

BEARINGS REFERENCED AS SHOWN = Location of corner