

# U.S. PUBLIC LAND SURVEY MONUMENT RECORD

Corner was: (check all that apply)  
 (Prepared and as required by S. A-E 7.08 Wi Administrative Code)

- Restored through acceptance of an obliterated evidence location
- Restored through acceptance of a found perpetuated location
- Determined to be lost and reestablished through proportionate methods.  
 (Show bearings and distances to PLSS corners used for proportioning)
- Restored/recovered/reestablished in a location that differs from a previously established position. (Show difference in plan view below.)
- Check here if additional information is shown on the reverse side of this form

Describe record evidence, recovered physical evidence, occupational evidence, testimonial evidence and all other evidence considered in the recovery/restoration of corner.

1860 - Original Corner established by Hiram C. Fellows  
 Original B.T.'S: HEMLOCK 10" N10°E 5 LINKS  
 HEMLOCK 8" S18°W 6 LINKS

1914 - Hutchinson measured 39.20-1/2 chains from here to SE corner.  
 Hutchinson measured 39.70 chains from here to SW corner.  
 Hutchinson FOUND STAKE FROM PREVIOUS SURVEYOR HERE, AND SET 2 N.B.T.'S.

1977 - William F. Kelly found no evidence. Set at centerlines of roads.  
 SET 3" ALUM. WITNESS CORNER. 40 FEET NORTH, SET 3 NEW B.T.'S

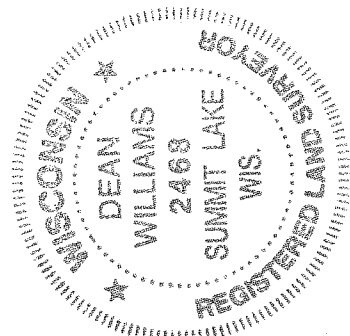
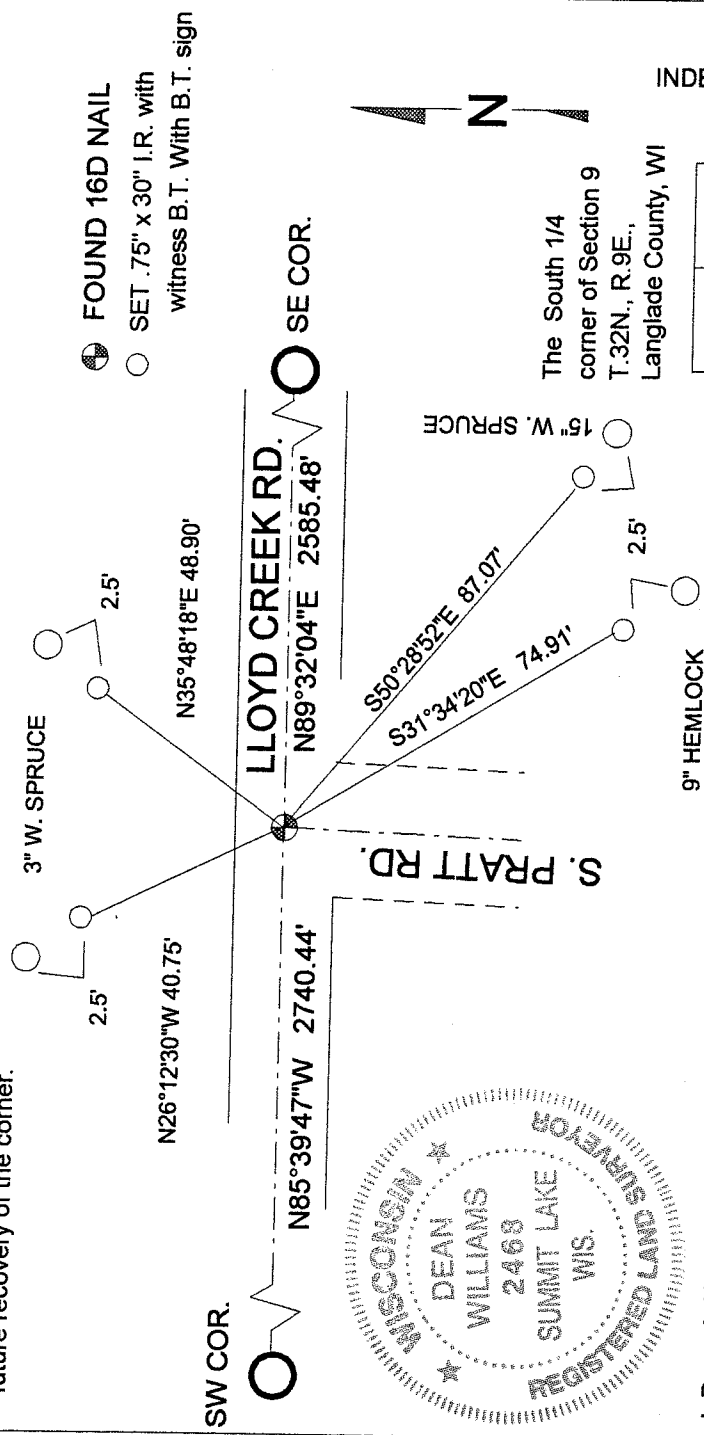
2006 - Dean A. Williams, James Gardner and Dave Tlusty found 16D NAIL SET BY PREVIOUS SURVEYOR  
 ALSO FOUND 1" I.P. .25" EAST

Accepted NAIL as best possible evidence of corner location.

Physical description of the monument set:

2006 - Accepted NAIL as best possible evidence of corner location and retied as shown.

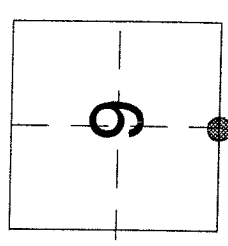
Describe the accessories used to perpetuate the location of the corner. Include a plan view drawing and indicate accessories found/set. Describe measuring point on bearing trees. Show any topographic features that would aid in future recovery of the corner.



I, Dean A. Williams RLS 2468, certify that the corner location shown on this record was determined by me or under my direction and control and that this U.S. Public Land Survey Record is correct and complete to the best of my knowledge and belief.

Signature: *Dean Williams* Date: 2/22/06

INDEX NO. J11



● = Location of corner

BEARINGS REFERENCED AS SHOWN