

CERTIFIED LAND CORNER RESTORATION

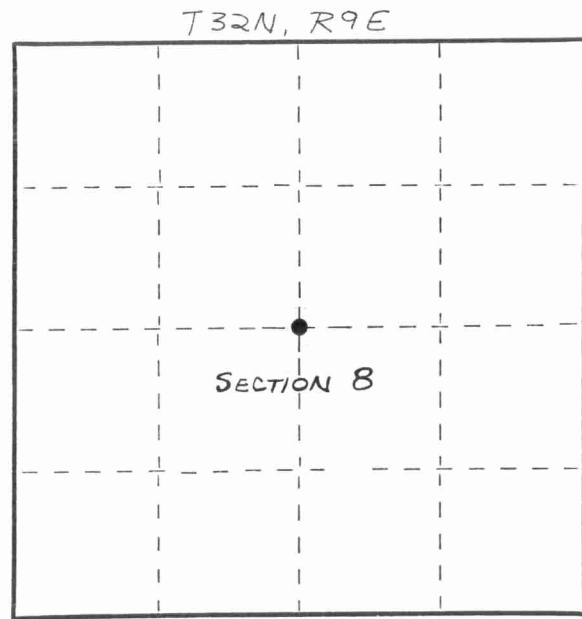
Index No. G-7

State of Wisconsin }
 County of LANGLADE } ss.

I WILLIAM F. KELLY, do hereby certify that on the 4th day of Dec., 1981, I found evidence of the CENTER corner of SECTION 8 Township 32, North, Range 9 EAST, Fourth Principal Meridian, as described hereon; and that from this evidence I established a new monument and accessories as described hereon to perpetuate the original location of this corner.

Resident witnesses:

.....



○ = Corner monument restored.

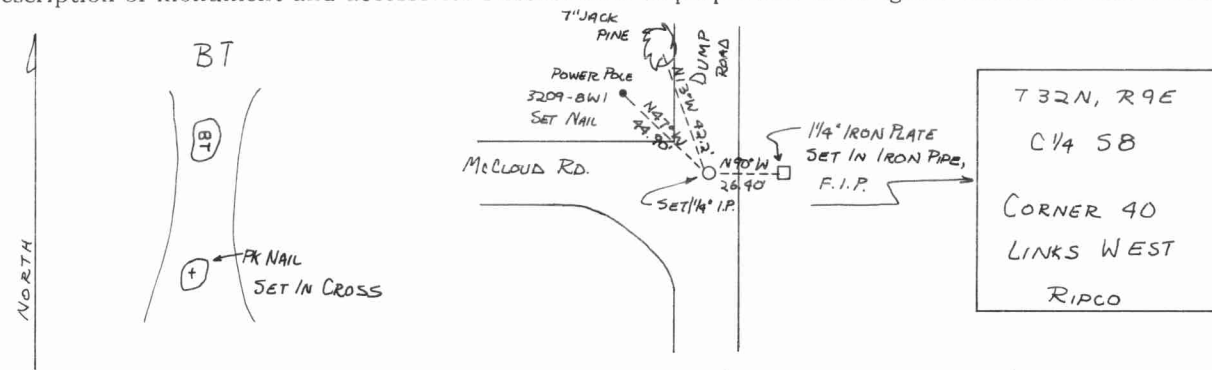
History of original corner establishment:

ORIGINAL CORNER ESTABLISHED BY
HIRAM C. FELLOWS IN SEPT., 1860.

Description of corner evidence found:

1 1/4" IRON PLATE SET IN IRON PIPE,
FOUND IN PLACE, AS WITNESS
MONUMENT. SET 1 1/4" IRON PIPE
AS CORNER.

Description of monument and accessories I established to perpetuate the original location of this corner.

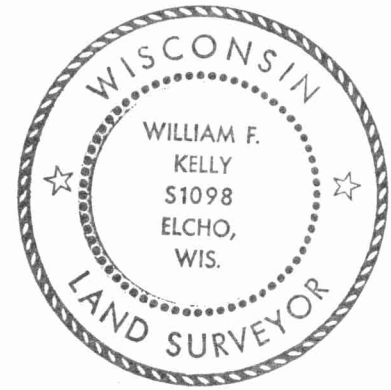


Dated at ELCHO, Wis., this 4th day of DECEMBER, 1981

Signature William F. Kelly Title COUNTY SURVEYOR Registration No. 1098
 (County Surveyor, Registered Land Surveyor, or other duly authorized official)

Office of Register of Deeds, County of....., I hereby certify that the within instrument was filed in this office for record on the..... day of....., 19..... at..... o'clock..... M.

.....
 (Register of Deeds)
 By..... Deputy



FORM 965 H. C. MILLER CO., MILWAUKEE