

LANGLADE COUNTY U.S. PUBLIC LAND CORNER RESTORATION

The South Quarter corner of Section 8, T. 32 N., R. 9 E., Langlade County, WI.

Corner was: (check all that apply)

- Restored through acceptance of an obliterated evidence location.
- Restored through acceptance of a found perpetuated location.
- Determined to be lost and re-established through proportionate methods.
- Show bearings and distances to PLSS corners used for proportioning, and show original distances).
- Restored/recovered/re-established in a location that differs from a previously established position.
- (Show difference in plan view below).
- Check here if additional information is shown on the reverse side of this form.

4320908 0020 2014

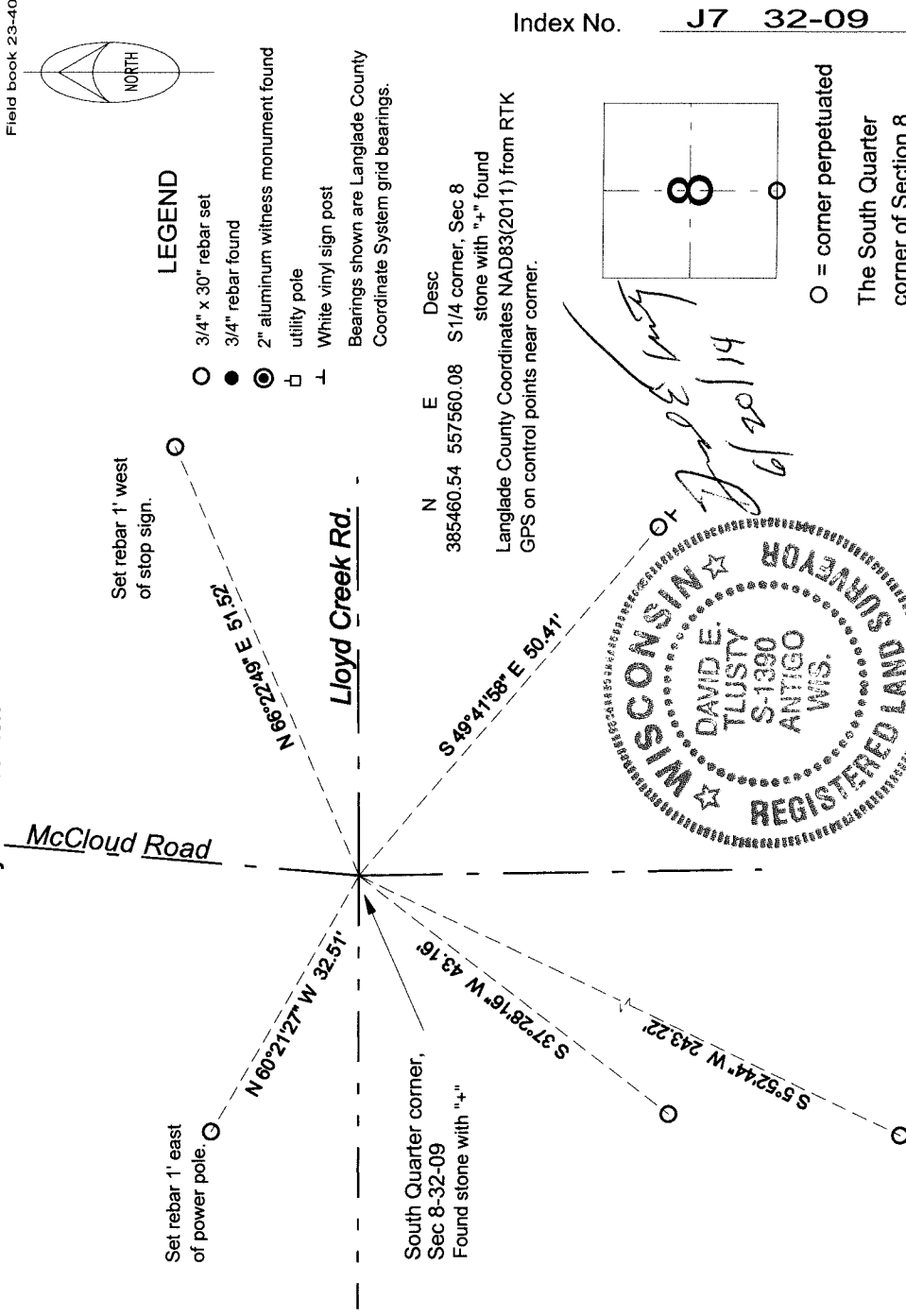
Describe record evidence, recovered physical evidence, occupational evidence, testimonial evidence and all other evidence considered in the recovery/restoration of the corner.

The original corner was established in 1860 by Hiram C. Fellows. Original bearing trees: birch, N60E, 29 links and a tamarac, 15", S70W 11 links. In 1917, Webley in FB101, Pg 74 described the corner as "1/4 stone set by Hutchinson". There are copies of Hutchinson notes on file in the County Surveyors records but no record specifically mentioning the fact that he set a stone. On 6/12/2014 D. Tlusty, Roger Meister and Tim Rusch, dug with county backhoe and found stone with clear chiseled + on top, in old road bed, 2.8 feet below surface of existing gravel road. Stone is flat on top and approximately 0.7' x 0.9' x about 1.3' tall. Accepted stone found as the best evidence of a perpetuation of the original corner location.

Physical description of the monument set:

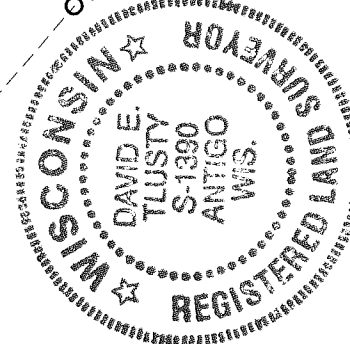
Stone is in good condition. Did not replace it. Set 1" x 30" iron pipe on north side of stone to aid in future recovery.

Describe the accessories used to perpetuate the corner. Include a plan view drawing and accessories found/set. Describe measuring point on bearing trees. Show any topographic features that would aid in future recovery of the corner.



Set rebar 4' north of power pole.

I, David E. Tlusty, Registered Land Surveyor, as Langlade County Surveyor, certify that the corner location on this record was determined by me and that this U.S. Public Land Survey Monument Record is correct to the best of my knowledge and belief.



David E. Tlusty
6/20/14