

# U.S. PUBLIC LAND SURVEY MONUMENT RECORD

(Prepared and as required by S. A-E 7.08 WI Administrative Code)

THE                      EAST QUARTER                      CORNER OF SECTION 7 , T. 32 N., R. 9 E., LANGLADE COUNTY, WISCONSIN.

CORNER WAS (CHECK ALL THAT APPLY):

- RESTORED THROUGH ACCEPTANCE OF AN OBLITERATED EVIDENCE LOCATION.
- RESTORED THROUGH ACCEPTANCE OF A FOUND PERPETUATED LOCATION.
- DETERMINED TO BE LOST AND RE-ESTABLISHED BY PROPORTIONATE METHODS.  
(SHOW BEARINGS AND DISTANCES TO PLSS CORNERS USED FOR PROPORTIONING.)
- RESTORED/RECOVERED/REESTABLISHED IN A LOCATION THAT DIFFERS FROM A PREVIOUSLY ESTABLISHED POSITION.  
(SHOW DIFFERENCE IN PLAN VIEW BELOW)
- CHECK HERE IF ADDITIONAL INFORMATION IS SHOWN ON THE REVERSE SIDE OF THIS FORM.

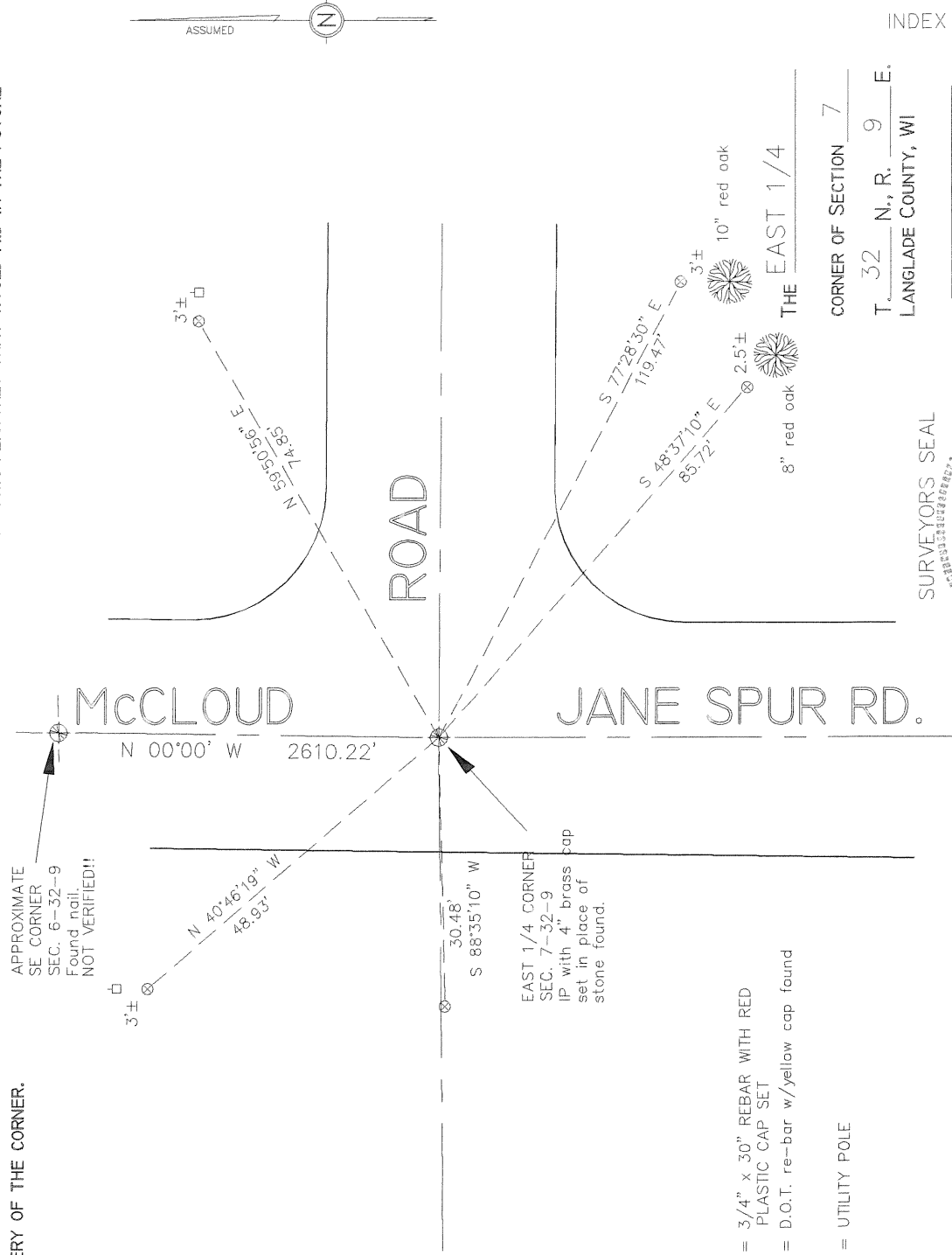
DESCRIBE RECORD EVIDENCE, RECOVERED PHYSICAL EVIDENCE, OCCUPATIONAL EVIDENCE, TESTIMONIAL EVIDENCE AND ALL OTHER EVIDENCE THAT WAS CONSIDERED IN THE RESTORATION/RECOVERY/REESTABLISHMENT OF THE CORNER.

The original corner was established in 1860 by Hiram C. Fellows. Original bearing trees: birch, 15", N 40 W, 30 lks., and a birch, 13", S 30 E, 12 lks. In 1915, Malcolm Hutchinson described the corner as a stone in road. In 1915, Malcolm Hutchinson described the corner as a stone in road. 09/18/96 Dave Tlusty, Mike Kielcheski, dug with county backhoe. Found 6" x 8" x 24" granite stone, upright and in good condition. Accepted stone found as the best evidence of the original corner location and replaced it with the monument described below. Replaced the stone because the top of it was only 3" below the gravel road surface.

PHYSICAL DESCRIPTION OF THE MONUMENT SET:

Set 1 1/2" x 36" iron pipe with 4" brass cap, 12" below gravel road surface, to replace stone found.

DESCRIBE THE ACCESSORIES USED TO PERPETUATE THE LOCATION OF THE CORNER. INCLUDE A PLAN VIEW DRAWING AND INDICATE ACCESSORIES FOUND AND SET. DESCRIBE THE MEASURING POINT ON BEARING TREES. SHOW ANY TOPOGRAPHIC FEATURES THAT WOULD AID IN THE FUTURE RECOVERY OF THE CORNER.



- ⊗ = 3/4" x 30" REBAR WITH RED PLASTIC CAP SET
- = D.O.T. re-bar w/yellow cap found
- ⊔ = UTILITY POLE

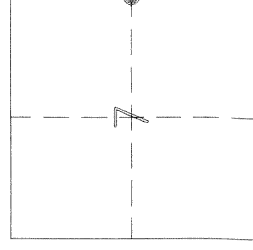


I, DAVID E. TLUSTY, LANGLADE COUNTY SURVEYOR, CERTIFY THAT THE CORNER LOCATION SHOWN ON THIS RECORD WAS DETERMINED BY ME AND THAT THIS U.S. PUBLIC LAND SURVEY MONUMENT RECORD IS CORRECT AND COMPLETE TO THE BEST OF MY KNOWLEDGE AND BELIEF.

*David E. Tlusty* 1/6/17

SIGNATURE

DATE



● = LOCATION OF CORNER