

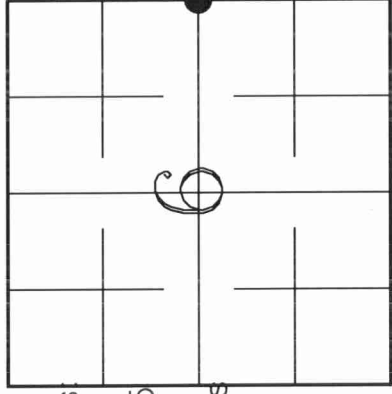
# U.S. PUBLIC LAND SURVEY MONUMENT RECORD

4320906 2000

**HISTORY OF ORIGINAL CORNER ESTABLISHMENT AND SUBSEQUENT RESTORATION AND DESCRIPTION OF ANY RECORD, MONUMENT OCCUPANCY, TESTIMONIAL OR OTHER EVIDENCE CONSIDERED:**

The original quarter corner was established in 1860 by Hiram C Fellows. Original Bearing Trees: Birch 15" N35W 12lks., Birch 14" S60E 22lks. In 1962, Rhinelander Paper Co resurveyed Sec 5 with a distance of 5301.98' from the E1/4 of Sec 6 to the E1/4 of Sec 5, and set a Witness Corner at the E1/4 of Sec 6. In 1972, Hallisy found the WC and added 2 new BT's to it. In Dec, 2003, Plover River Land Co found the WC to be 38' East of the C.L. of McCloud Rd, (possibly moved). We set a 1"OD pipe on the C.L. of the road. This position matched RIPCO's distance of 5301.98' within 0.30'

● = LOCATION OF CORNER



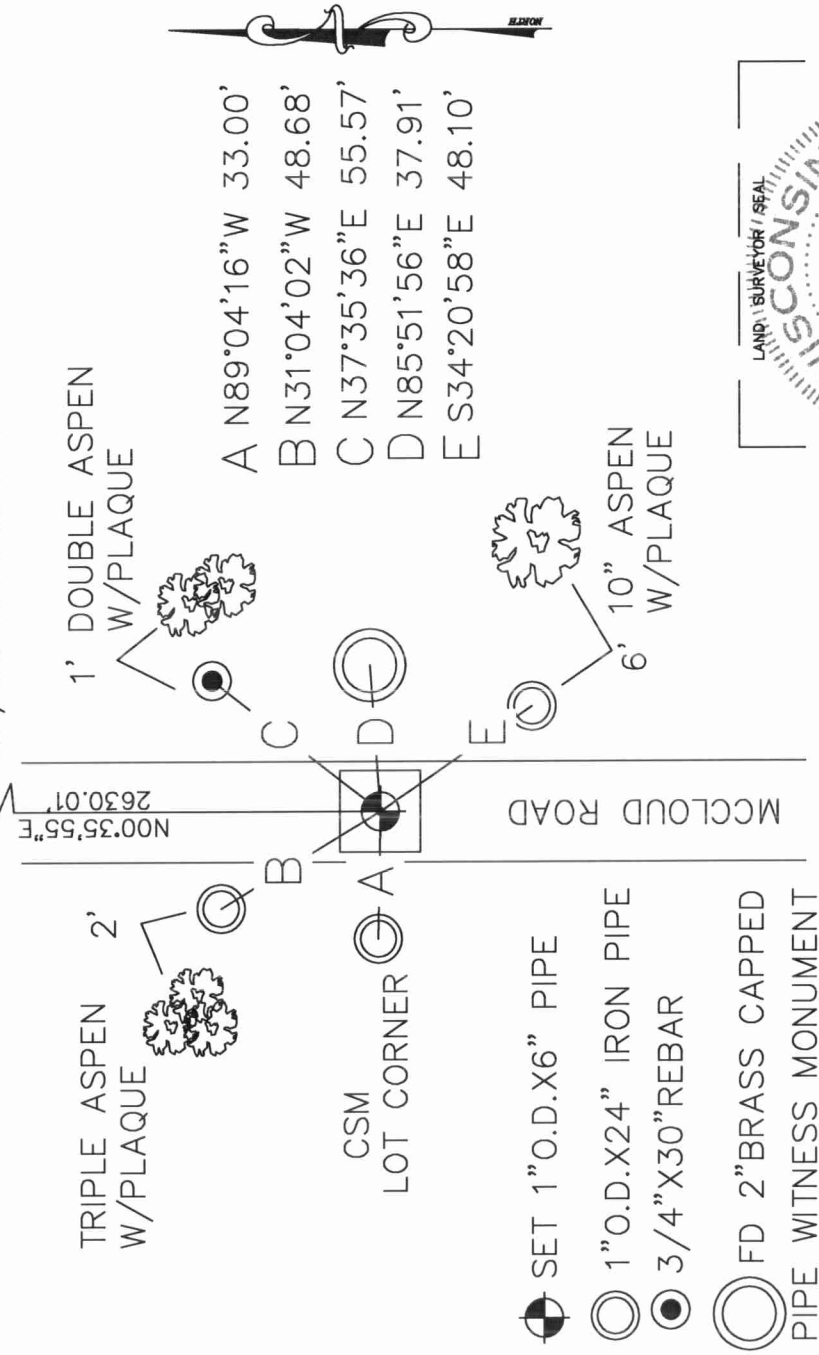
SECTION 6  
TOWNSHIP 32 NORTH, RANGE 09 EAST  
TOWN OF VILAS  
LANGLADE COUNTY, WISCONSIN

**CORNER WAS: (CHECK ALL THAT APPLY)**

- RESTORED THROUGH ACCEPTANCE OF AN OBLITERATED EVIDENCE LOCATION
- RESTORED THROUGH ACCEPTANCE OF A FOUND PERPETUATED LOCATION
- CONSIDERED A LOST CORNER AND REESTABLISHED THROUGH LOST CORNER PROPORTIONATE METHODS (INCLUDE A PLAN VIEW DRAWING SHOWING DISTANCES AND DIRECTIONS TO OTHER PUBLIC LAND SURVEY CORNERS USED FOR PROPORTIONING AND DETERMINING THE CORNER LOCATION)
- RESTORED OR REESTABLISHED IN A LOCATION THAT DIFFERS FROM A PREVIOUS RESTORATION OR REESTABLISHMENT (INCLUDE A PLAN VIEW DRAWING AND INDICATE WHAT WAS SET AND/OR FOUND)
- CHECK IF THERE IS ADDITIONAL INFORMATION ON BACK

DESCRIBE THE MONUMENT AND ACCESSORIES USED TO PERPETUATE THE LOCATION OF THE CORNER. (INCLUDE A PLAN VIEW DRAWING AND INDICATE WHAT WAS SET AND/OR FOUND) ALSO INCLUDE FOUR TIES TO THE SECTION CORNER AND DESCRIPTION OF THE TIES.

FD2" ALUM CAPPED MONUMENT NE/CORNER SEC 6



**DANIEL E. HIGGINBOTHAM**

(type or print name) CERTIFY THAT THE CORNER LOCATION SHOWN ON THIS RECORD WAS DETERMINED BY ME OR UNDER MY DIRECTION AND CONTROL AND THAT THIS U.S. PUBLIC LAND SURVEY MONUMENT RECORD IS CORRECT AND COMPLETE TO THE BEST OF MY KNOWLEDGE AND BELIEF.

*D. Higginbotham*

SIGNATURE

10/28/04

DATE



INDEX NO. CS