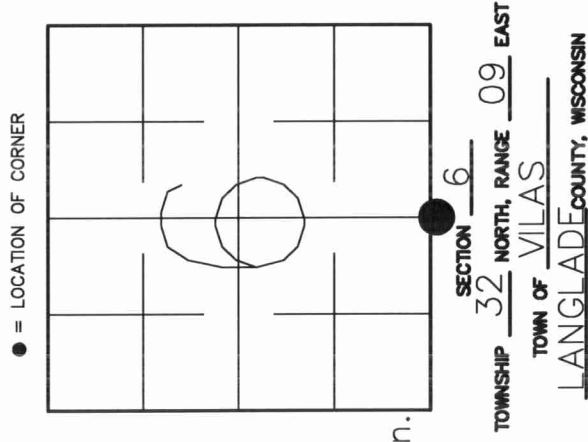


U.S. PUBLIC LAND SURVEY MONUMENT RECORD

43209060020

HISTORY OF ORIGINAL CORNER ESTABLISHMENT AND SUBSEQUENT RESTORATION AND DESCRIPTION OF ANY RECORD, MONUMENT OCCUPATIONAL, TESTIMONIAL OR OTHER EVIDENCE CONSIDERED:

The original quarter corner was established in 1860 by Hiram C Fellows. Original Bearing Trees: Birch 30" N40W 16lks., Fir 7" S10W 25lks. No subsequent survey work at this quarter corner until Higginbotham found a 1.25" pipe (no record of how it got there found) doing survey work in Sec 7 to the South in 1996. It matched well with occupation. 2/13/2004, Gerry Bahar and Mark Black tied out this pipe after using its location for a survey in Sec 6.



CORNER WAS: (CHECK ALL THAT APPLY)

- RESTORED THROUGH ACCEPTANCE OF AN OBLITERATED EVIDENCE LOCATION
- RESTORED THROUGH ACCEPTANCE OF A FOUND PERPETUATED LOCATION
- CONSIDERED A LOST CORNER AND REESTABLISHED THROUGH LOST CORNER PROPORTIONATE METHODS (INCLUDE A PLAN VIEW DRAWING SHOWING DISTANCES AND DIRECTIONS TO OTHER PUBLIC LAND SURVEY CORNERS USED FOR PROPORTIONING AND DETERMINING THE CORNER LOCATION)
- RESTORED OR REESTABLISHED IN A LOCATION THAT DIFFERS FROM A PREVIOUS RESTORATION OR REESTABLISHMENT (INCLUDE A PLAN VIEW DRAWING AND INDICATE WHAT WAS SET AND/OR FOUND)
- CHECK IF THERE IS ADDITIONAL INFORMATION ON BACK

DESCRIBE THE MONUMENT AND ACCESSORIES USED TO PERPETUATE THE LOCATION OF THE CORNER. (INCLUDE A PLAN VIEW DRAWING AND INDICATE WHAT WAS SET AND/OR FOUND) ALSO INCLUDE FOUR TIES TO THE SECTION CORNER AND DESCRIPTION OF THE TIES.

THIS PIPE AT THE S1/4 IS IN A 75'X150' CLEARING IN A LOOGGED AREA ABOUT 65' SOUTH OF AN OLD RAILROAD GRADE.

-  FD 1.25" PIPE
-  SET 3/4"X30" REBAR AS TIE

5" POPPLE W/PLAQUE



N39W
45.06'



6" POPPLE W/PLAQUE

N76E
65.05'



6" POPPLE W/PLAQUE

S60W
26.28'

8" POPPLE W/PLAQUE



S43E
91.75'



DANIEL E. HIGGINBOTHAM

(Type or print name) CERTIFY THAT THE CORNER LOCATION SHOWN ON THIS RECORD WAS DETERMINED BY ME OR UNDER MY DIRECTION AND CONTROL AND THAT THIS U.S. PUBLIC LAND SURVEY MONUMENT RECORD IS CORRECT AND COMPLETE TO THE BEST OF MY KNOWLEDGE AND BELIEF.

D. Higginbotham

SIGNATURE

10/28/04

DATE



E-3

INDEX NO.