

U.S. PUBLIC LAND SURVEY MONUMENT RECORD

(Prepared and as required by S. A-E 7.08 WI Administrative Code)

THE APPROXIMATE SOUTHEAST CORNER OF SECTION 6, T. 32 N., R. 9 E., LANGLADE COUNTY, WISCONSIN.

CORNER WAS (CHECK ALL THAT APPLY):

- RESTORED THROUGH ACCEPTANCE OF AN OBLITERATED EVIDENCE LOCATION.
- RESTORED THROUGH ACCEPTANCE OF A FOUND PERPETUATED LOCATION.
- DETERMINED TO BE LOST AND RE-ESTABLISHED BY PROPORTIONATE METHODS.
(SHOW BEARINGS AND DISTANCES TO PLSS CORNERS USED FOR PROPORTIONING.)
- RESTORED/RECOVERED/REESTABLISHED IN A LOCATION THAT DIFFERS FROM A PREVIOUSLY ESTABLISHED POSITION.
(SHOW DIFFERENCE IN PLAN VIEW BELOW)
- CHECK HERE IF ADDITIONAL INFORMATION IS SHOWN ON THE REVERSE SIDE OF THIS FORM.

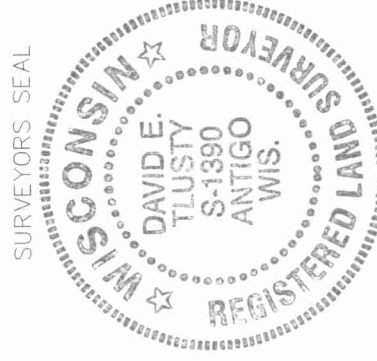
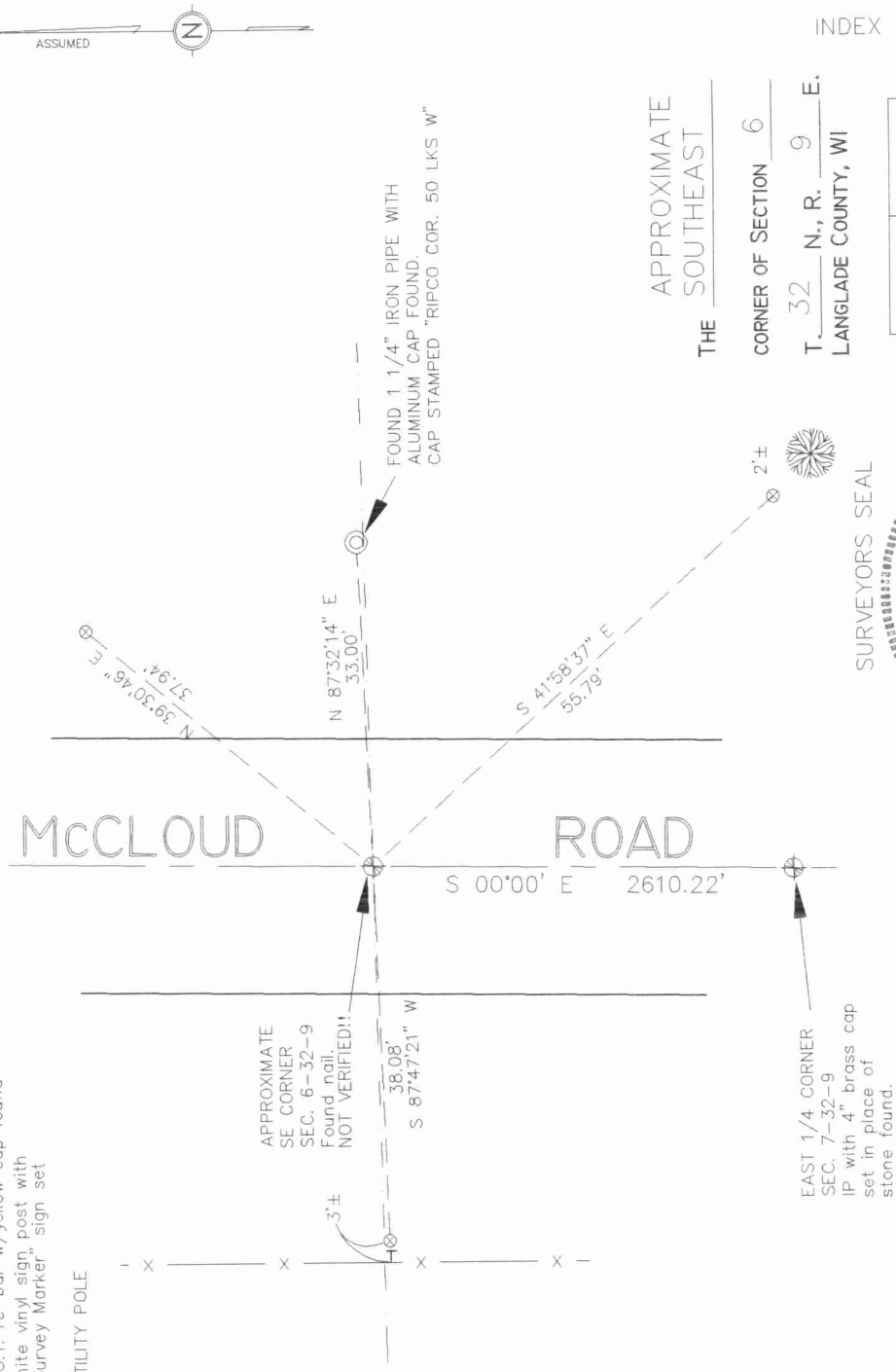
DESCRIBE RECORD EVIDENCE, RECOVERED PHYSICAL EVIDENCE, OCCUPATIONAL EVIDENCE, TESTIMONIAL EVIDENCE AND ALL OTHER EVIDENCE THAT WAS CONSIDERED IN THE RESTORATION/RECOVERY/REESTABLISHMENT OF THE CORNER.

The original corner was established in 1860 by Hiram C. Fellows. Original bearing trees: hemlock, 10", N 70 W, 13 lks., and a sugar, 12", S 15 E, 12 lks. In 1939, Malcolm Hutchinson used this corner in a survey in the NE 1/4 of Section 6, but didn't describe it. In 1972, Ray Hallisy found a witness corner, a 1 1/2" iron pipe with 3" aluminum cap set by Ripco. Hallisy apparently found no evidence of the actual corner and marked 2 BT's to the witness corner. 09/20/96 Dave Tlusty found 60d spike 33' west of witness corner. ORIGIN OF NAIL NOT KNOWN. DETAILS OF WHY RIPCO SET WITNESS CORNER HERE NOT KNOWN. NAIL NOT VERIFIED AT THIS TIME.

PHYSICAL DESCRIPTION OF THE MONUMENT SET:
60d nail found was not replaced.

DESCRIBE THE ACCESSORIES USED TO PERPETUATE THE LOCATION OF THE CORNER. INCLUDE A PLAN VIEW DRAWING AND INDICATE ACCESSORIES FOUND AND SET. DESCRIBE THE MEASURING POINT ON BEARING TREES. SHOW ANY TOPOGRAPHIC FEATURES THAT WOULD AID IN THE FUTURE RECOVERY OF THE CORNER.

- ⊗ = 3/4" x 30" REBAR WITH RED PLASTIC CAP SET
- = D.O.T. re-bar w/yellow cap found
- ┆ = white vinyl sign, post with "Survey Marker" sign set
- = UTILITY POLE



I, DAVID E. TLUSTY, LANGLADE COUNTY SURVEYOR, CERTIFY THAT THE CORNER LOCATION SHOWN ON THIS RECORD WAS DETERMINED BY ME AND THAT THIS U.S. PUBLIC LAND SURVEY MONUMENT RECORD IS CORRECT AND COMPLETE TO THE BEST OF MY KNOWLEDGE AND BELIEF.

SIGNATURE

DATE

INDEX No. E-5 C-5

