

43209052020

# U.S. PUBLIC LAND SURVEY MONUMENT RECORD

(Prepared and as required by S. A-E 7.08 WI Administrative Code)

The Center 1/4 corner of Section 5, T. 32N., R9E., Langlade County, WI

### Corner was: (check all that apply)

- Restored through acceptance of an obliterated evidence location.
- Restored through acceptance of a found perpetuated location.
- Determined to be lost and reestablished through proportionate methods.  
(Show bearings and distances to PLSS corners used for proportioning)
- Restored/recovered/reestablished in a location that differs from a previously established position. (Show difference in plan view below.)
- Check here if additional information is shown on the reverse side of this form.

### Describe record evidence, recovered physical evidence, occupational evidence, testimonial evidence and all other evidence considered in the recovery/restoration of corner.

Corner was not set as part of the original GLO survey.

1962: Rhinelander Paper Company resurveyed Section 5 - see map record number 20169 on file at the Langlade County Land Records. It appears they set an unstamped aluminum capped iron pipe at the center of Section 5. No tie sheet on file.

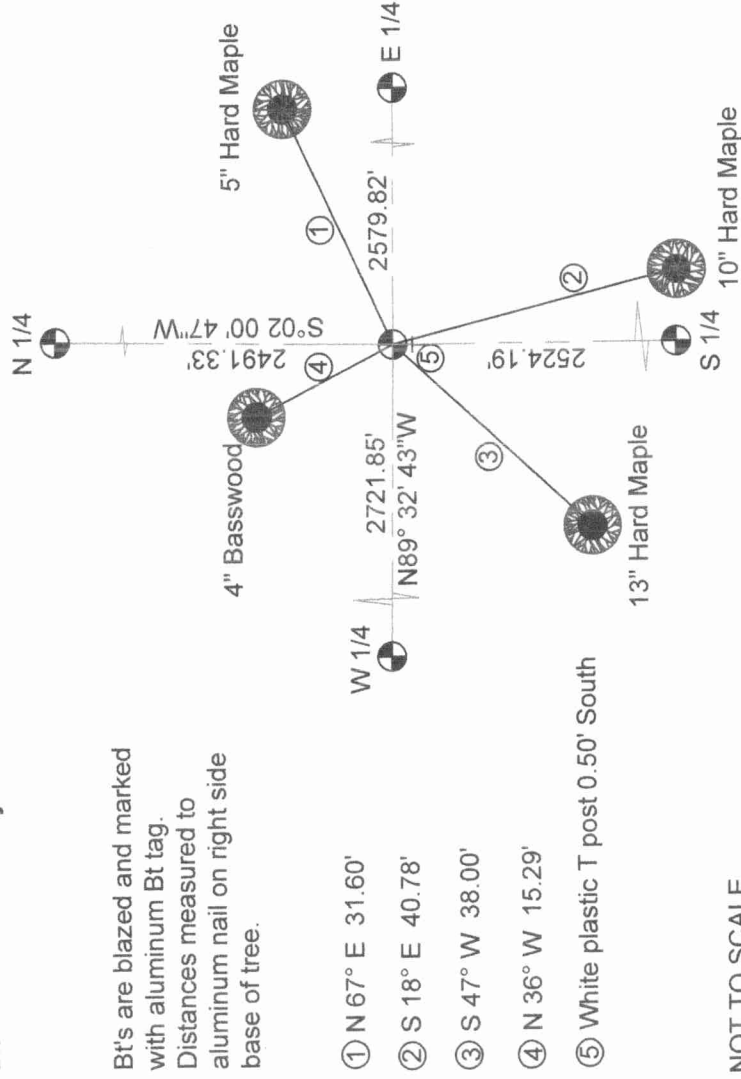
July 2005: I surveyed Section 5 and calculated center of Section. Found that the existing monument was in the correct position.

### Physical description of the monument set:

Left monument in place and tied as follows.

**Describe the accessories used to perpetuate the location of the corner. Include a plan view drawing and indicate accessories found/set. Describe measuring point on bearing trees. Show any topographic features that would aid in future recovery of the corner.**

Bt's are blazed and marked with aluminum Bt tag. Distances measured to aluminum nail on right side base of tree.



Bearings are magnetic handheld compass

NOT TO SCALE

The Center 1/4 corner of Section 5 T. 32 N., R. 9 E. Langlade County, WI

DRAFTED BY:  
PAUL MATTMILLER

I, Timothy J. Rusch RLS 2671, certify that the corner location shown on this record was determined by me or under my direction and control and that this U.S. Public Land Survey Record is correct and complete to the best of my knowledge and belief.

*T. Rusch*  
Signature  
11-15-2005  
Date

SURVEYOR'S SEAL

