

43209052000

# U.S. PUBLIC LAND SURVEY MONUMENT RECORD

(Prepared and as required by S. A-E 7.08 Wi Administrative Code)  
 The East 1/4 corner of Section 5, T. 32N., R. 9 E., Langlade County, WI

**Corner was: (check all that apply)**

- Restored through acceptance of an obliterated evidence location.
- Restored through acceptance of a found perpetuated location.**
- Determined to be lost and reestablished through proportionate methods.  
 (Show bearings and distances to PLSS corners used for proportioning)
- Restored/recovered/reestablished in a location that differs from a previously established position. (Show difference in plan view below.)
- Check here if additional information is shown on the reverse side of this form.

**Describe record evidence, recovered physical evidence, occupational evidence, testimonial evidence and all other evidence considered in the recovery/restoration of corner.**

September 1860: Corner originally set by H. C. Fellows. Bt's Elm 11", N 45° E, 8 links; Sugar Maple 7", S 10° W, 5 links.  
 1962: Rhinelander Paper Co, Resurveyed Section 5, see map record No. 20169 on file at the Langlade County Land Records. It appears they restored the E 1/4 by proportioning between the found SE corner and the NE corner of the section. No tie sheet was filed.

July, 2005: I found the Ripco monument- Pipe was bent and badly leaning East, aluminum cap cracked and held in place by wire.

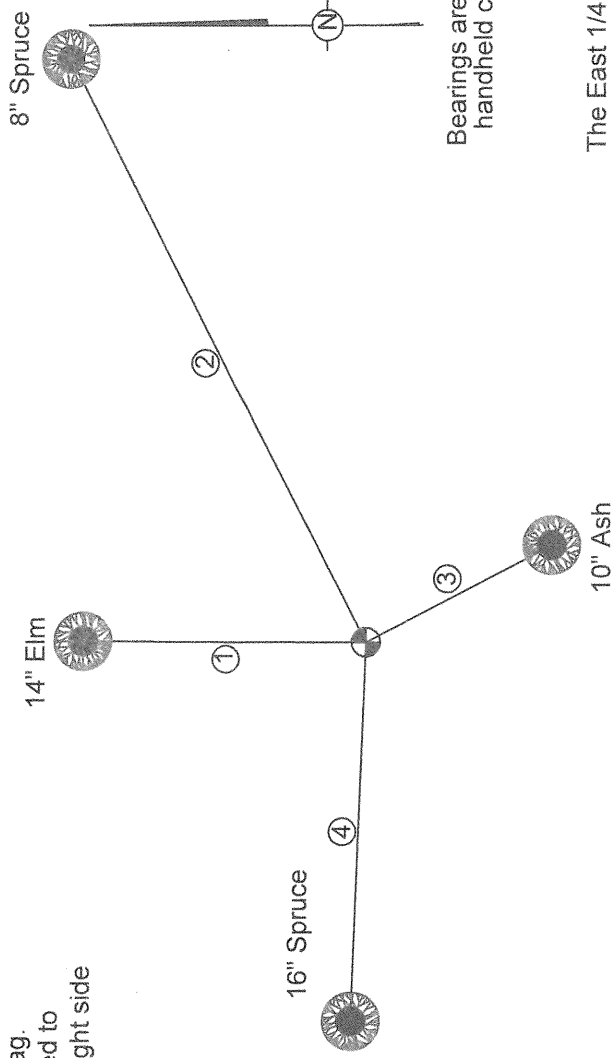
**Physical description of the monument set:**

I set a new 2.375" pipe with a 31/4" brass cap in place of the Ripco monument and tied out as follows.

**Describe the accessories used to perpetuate the location of the corner. Include a plan view drawing and indicate accessories found/set. Describe measuring point on bearing trees. Show any topographic features that would aid in future recovery of the corner.**

Bt's are blazed and marked with aluminum Bt tag.  
 Distances measured to aluminum nail on right side base of tree.

- ① N 04° W 34.32'
- ② N 62° E 60.89'
- ③ S 34° W 29.11'
- ④ N 84° W 43.09'



Bearings are magnetic  
handheld compass

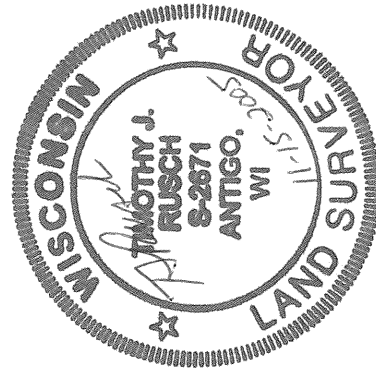
NOT TO SCALE

SURVEYOR'S SEAL

DRAFTED BY:  
PAUL MATTMILLER

I, Timothy J. Rusch RLS 2671, certify that the corner location shown on this record was determined by me or under my direction and control and that this U.S. Public Land Survey Record is correct and complete to the best of my knowledge and belief.

*Timothy J. Rusch*  
 Signature 11-15-2005  
 Date



The East 1/4 corner to Section 5  
 T. 32 N., R. 9 E.  
 Langlade County, WI

