

# U.S. PUBLIC LAND SURVEY MONUMENT RECORD

(Prepared and as required by S. A-E 7.08 WI Administrative Code)

The C 1/4 corner of Section 4, T. 32 N., R. 9 E., Langlade County, WI

Corner was: (check all that apply)

- Restored through acceptance of an obliterated evidence location.
- Restored through acceptance of a found perpetuated location.
- Determined to be lost and re-established through proportionate methods.  
(Show bearings and distances to PLSS corners used for proportioning.)
- Restored/recovered/reestablished in a location that differs from a previously established position. (Show difference in plan view below.)
- Check here if additional information is shown on the reverse side of this form.

Describe record evidence, recovered physical evidence, occupational evidence, testimonial evidence and all other evidence considered in the recovery/restoration of the corner.

NOT PREVIOUSLY SET

2003 DEAN A WILLIAMS SUB-DIVIDED SECTION 4-32-9  
SET COR. AT INTERSECTION OF 1/4 LINES.

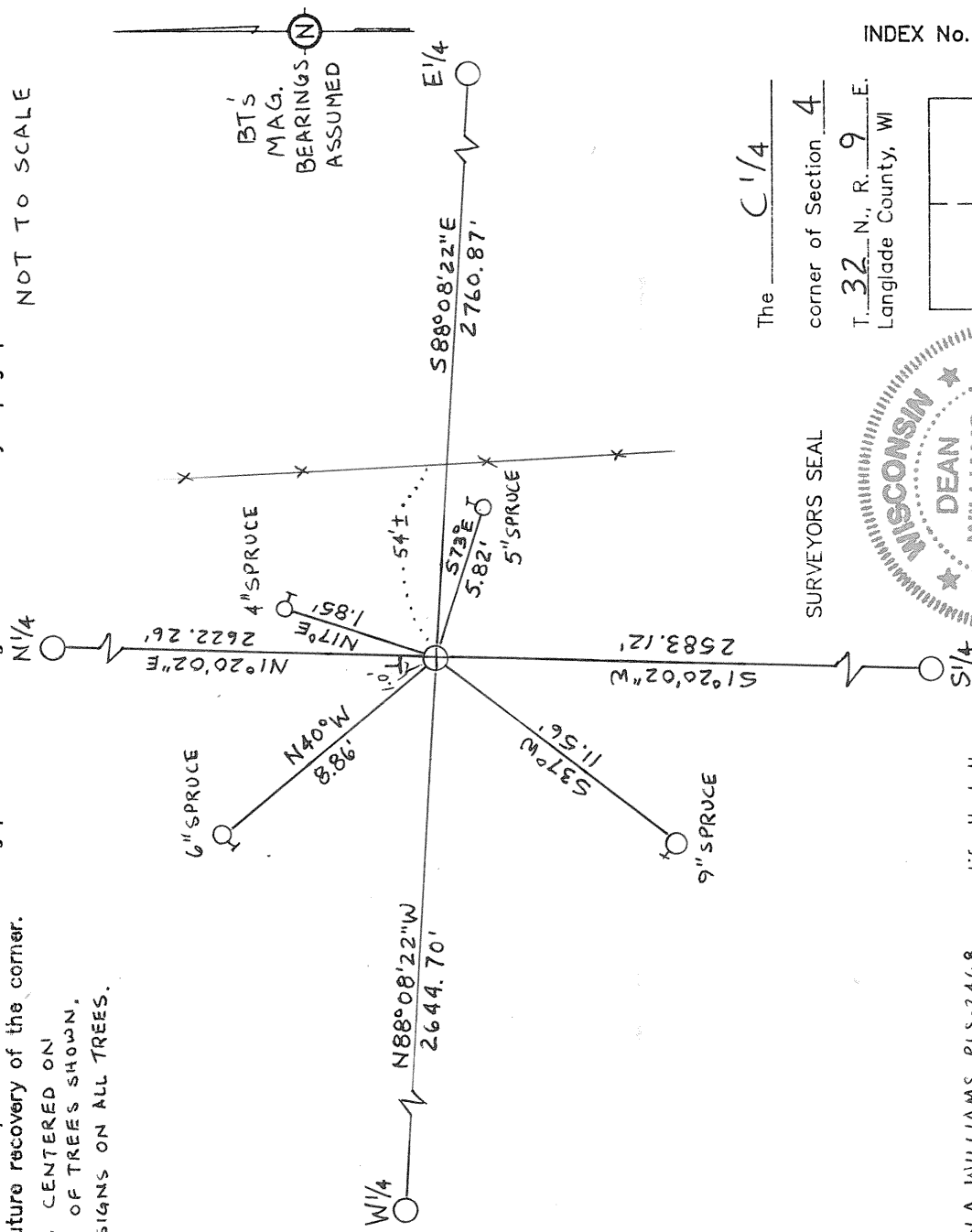
Physical description of the monument set:

SET 1.9" x 24" I.P. AND W.V.P. 1.0' NORTH

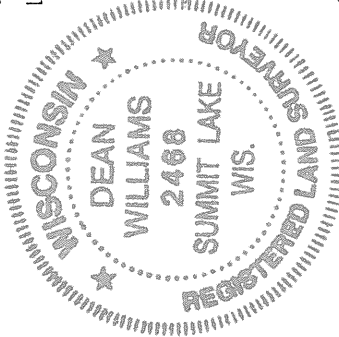
Describe the accessories used to perpetuate the location of the corner. Include a plan view drawing and indicate accessories found/set. Describe measuring point on bearing trees. Show any topographic features that would aid in future recovery of the corner.

NOT TO SCALE

NAILS CENTERED ON  
SIDE OF TREES SHOWN,  
BT SIGNS ON ALL TREES.

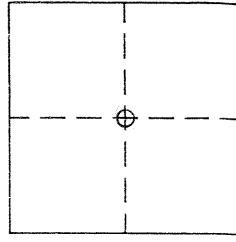


The C 1/4 corner of Section 4, T. 32 N., R. 9 E., Langlade County, WI



I, DEAN A. WILLIAMS RLS-2468, certify that the corner location shown on this record was determined by me or under my direction and control and that this U.S. Public Land Survey Monument Record is correct and complete to the best of my knowledge and belief.

Signature Dean Williams Date 10/13/03



O = Location of corner

INDEX No. C 11