

CERTIFIED LAND CORNER RESTORATION

Index No. C-13

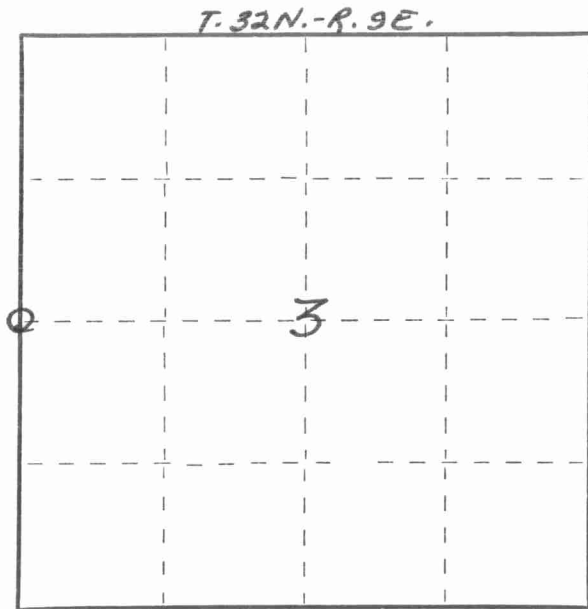
State of Wisconsin }  
 County of LANGLADE } ss.

I WILLIAM F. KELLY, do hereby certify that on the 28<sup>th</sup> day of SEPTEMBER, 19 77, I found evidence of the 1/4 corner of SECTIONS 4 & 3 Township 32, North, Range 9E, Fourth Principal Meridian, as described hereon; and that from this evidence I established a new monument and accessories as described hereon to perpetuate the original location of this corner.

Resident witnesses:

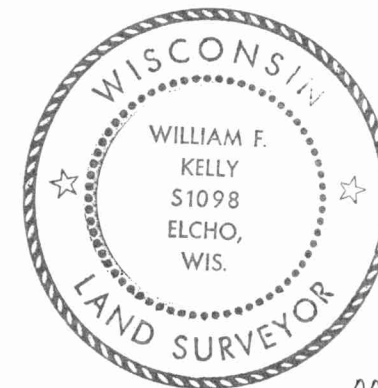
.....  
 .....

FORM 985 H. C. MILLER CO., MILWAUKEE



○ = Corner monument restored.

History of original corner establishment:

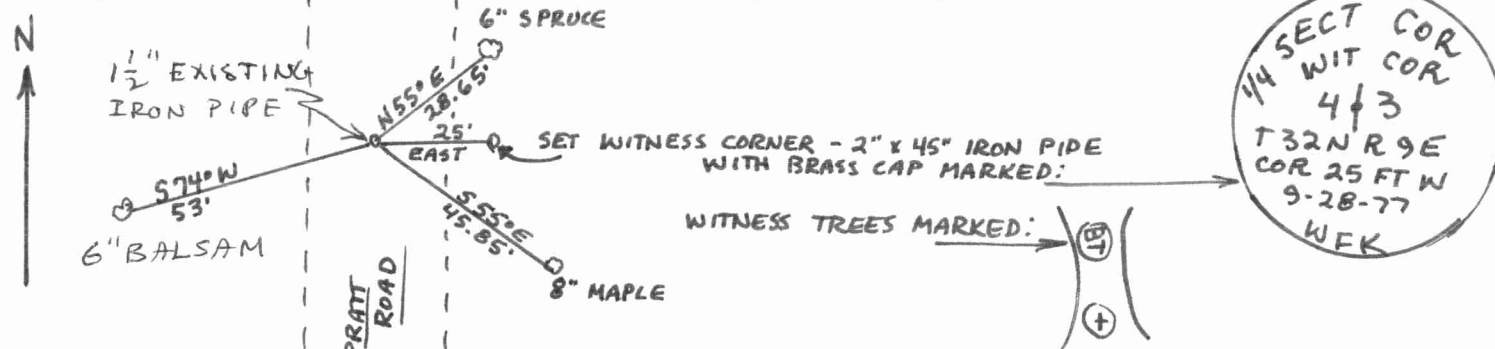


*William F. Kelly 9-28-77*

Description of corner evidence found:

LOCATED W 1/4 COR. SECTION 3 T. 32N.-R. 9E. ON RETRACEMENT OF PREVIOUS SURVEY BY M. HUTCHINSON AND ORIGINAL GOV'T SURVEY NOTES. CONTROL SURVEY OF SECTION 3, T. 32N.-R. 9E. BY DWENK-ILLINOIS.

Description of monument and accessories I established to perpetuate the original location of this corner.



Dated at ELCHO, Wis., this 28<sup>th</sup> day of SEPTEMBER, 1977

Signature William F. Kelly Title REGISTERED LAND SURVEYOR Registration No. 51098  
 (County Surveyor, Registered Land Surveyor, or other duly authorized official)

Office of Register of Deeds, County of ....., I hereby certify that the within instrument was filed in this office for record on the ..... day of ....., 19..... at ..... o'clock ..... M.

(Register of Deeds)

By ..... Deputy