

# U.S. PUBLIC LAND SURVEY MONUMENT RECORD

(Prepared and as required by S. A-E 7.08 WI Administrative Code)

The S 1/4 corner of Section 4, T. 32 N., R. 9 E., Langlade County, WI

43209040020

- Corner was: (check all that apply)
- Restored through acceptance of an obliterated evidence location.
  - Restored through acceptance of a found perpetuated location.
  - Determined to be lost and re-established through proportionate methods. (Show bearings and distances to PLSS corners used for proportionating.)
  - Restored/recovered/reestablished in a location that differs from a previously established position. (Show difference in plan view below.)

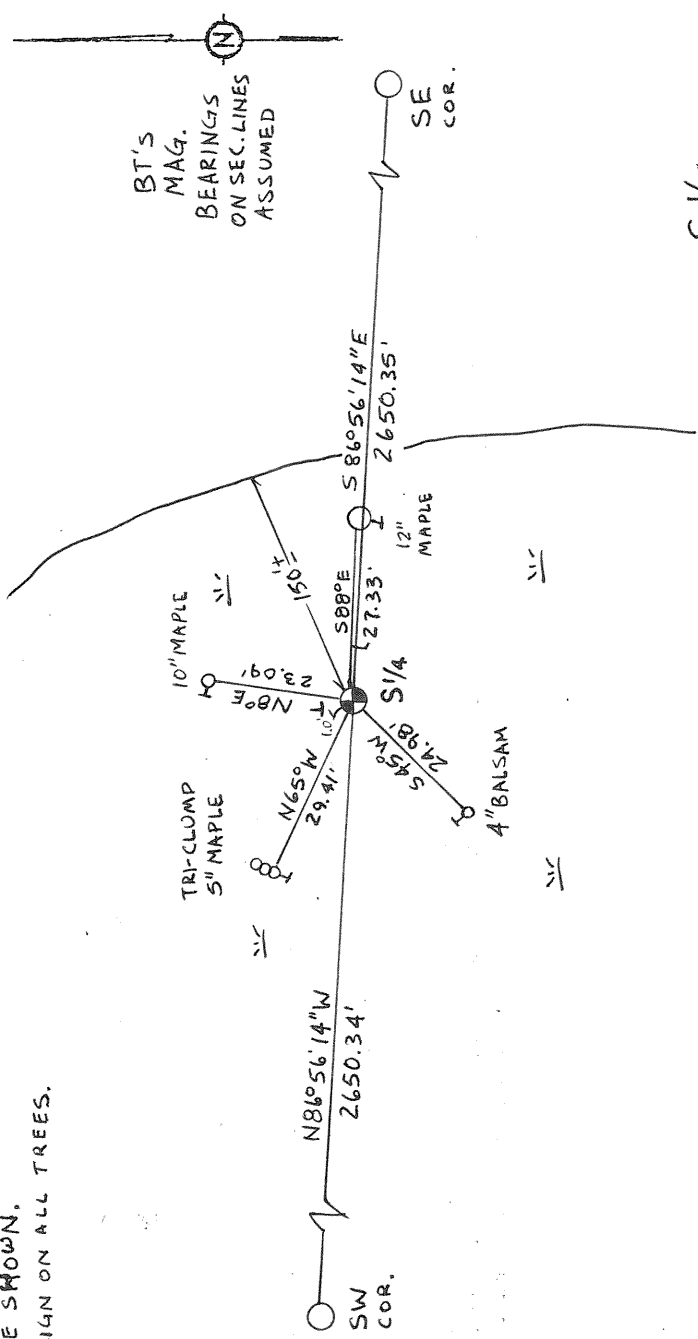
- Check here if additional information is shown on the reverse side of this form.
- Describe record evidence, recovered physical evidence, occupational evidence, testimonial evidence and all other evidence considered in the recovery/restoration of the corner.

ORIGINAL CORNER 1860 BY HIRAM C. FELLOWS  
 ORIGINAL BTs: BIRCH 30" N10°W 28 LKS, MAPLE 10" S63°E 12 LKS,  
1910 HUTCHINSON? MEASURED BETWEEN N 1/4 AND S 1/4 79.19 ch. INTERSECTS 25 Lks. EAST OF POST,  
FOUND ORIGINAL BT, BUT DID NOT CORRESPOND WITH NOTES.  
2003 DEAN A. WILLIAMS EXTENSIVELY SEARCHED, FOUND NOTHING.  
 SINGLE PROPORTION ON SECTION LINE BETWEEN SW AND SE CORNERS.

Physical description of the monument set:  
SET STANDARD 2.375" x 30" IP WITH 3.25" BRASS CAP .3' ABOVE SWAMP.

Describe the accessories used to perpetuate the location of the corner. Include a plan view drawing and indicate accessories found/set. Describe measuring point on bearing trees. Show any topographic features that would aid in future recovery of the corner.

NAIL TIED TO CORNER  
 ON CENTER OF SIDE OF  
 TREE SHOWN.  
 BT SIGN ON ALL TREES.

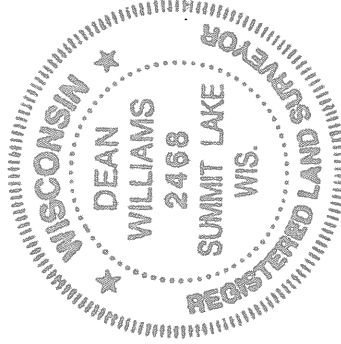


The S 1/4

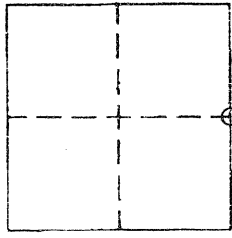
corner of Section 4

T. 32 N., R. 9 E.  
 Langlade County, WI

SURVEYORS SEAL



INDEX No. E11



I, DEAN A. WILLIAMS RLS-2468, certify that the corner location shown on this record was determined by me or under my direction and control and that this U.S. Public Land Survey Monument Record is correct and complete to the best of my knowledge and belief.

*Dean Williams*

Signature

10/13/03

Date