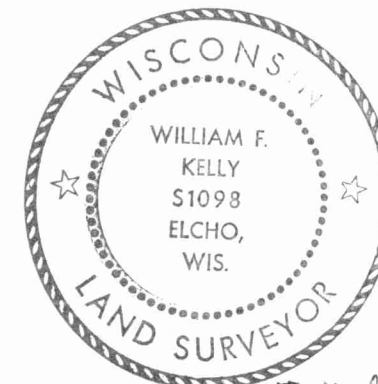


CERTIFIED LAND CORNER RESTORATION

Index No. E-13

State of Wisconsin }
 County of LANGLADE } ss.

History of original corner establishment:



William F. Kelly 9-9-77

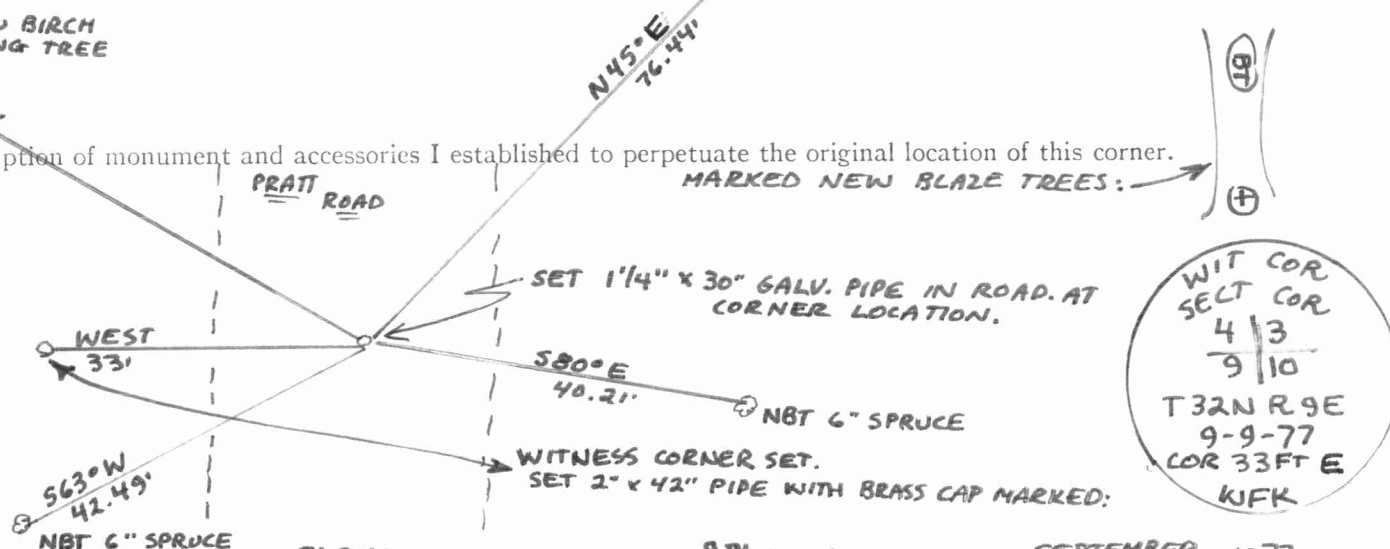
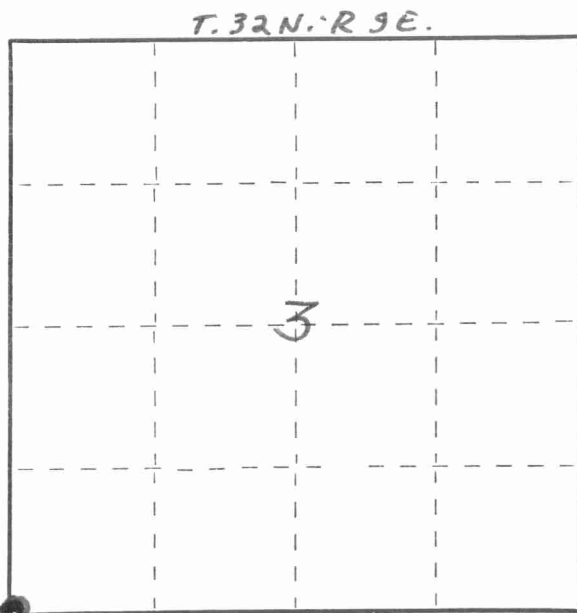
I WILLIAM F. KELLY, do hereby certify that on the 9TH day of SEPTEMBER, 1977, I found evidence of the SECTION corner of SECTIONS 3, 4, 9 & 10 Township 32, North, Range 9E, Fourth Principal Meridian, as described hereon; and that from this evidence I established a new monument and accessories as described hereon to perpetuate the original location of this corner.

Description of corner evidence found:
 CORNER ESTABLISHED BY OWENS - ILLINOIS FROM SURVEY RECORDS OF M. HUTCHINSON.
 LOCATED TWO OLD BEARING TREES

Resident witnesses:

.....

Description of monument and accessories I established to perpetuate the original location of this corner.



WIT COR
 SECT COR
 4/3
 9/10
 T32N R9E
 9-9-77
 COR 33FT E
 WFK

Dated at ELCHO, Wis., this 9TH day of SEPTEMBER, 1977

Signature William F. Kelly Title REGISTERED LAND SURVEYOR Registration No. 51098
 (County Surveyor, Registered Land Surveyor, or other duly authorized official)

Office of Register of Deeds, County of, I hereby certify that the within instrument was filed in this office for record on the day of, 19..... at o'clock M.

(Register of Deeds)

By Deputy

○ = Corner monument restored.