

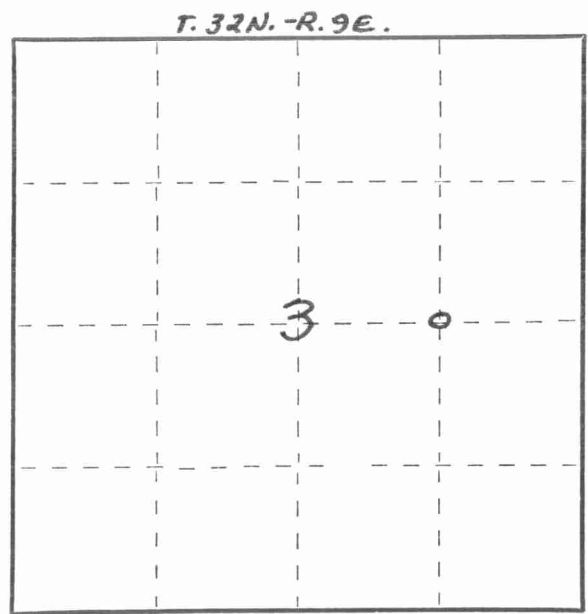
CERTIFIED LAND CORNER RESTORATION

Index No. C-16

State of Wisconsin }
 County of LANGLADE } ss.

I WILLIAM F. KELLY, do hereby certify that on the 7TH day of SEPTEMBER, 1977, I found evidence of the E 1/8 corner of E-W 1/4 LINE SECT 3 Township 32, North, Range 9 E, Fourth Principal Meridian, as described hereon; and that from this evidence I established a new monument and accessories as described hereon to perpetuate the original location of this corner.

Resident witnesses:

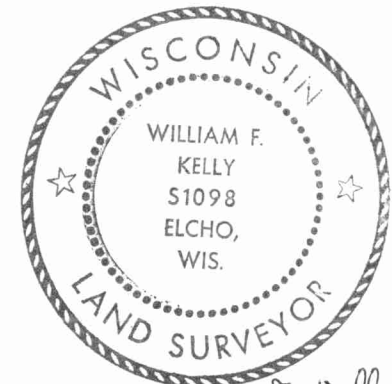


○ = Corner monument restored.

History of original corner establishment:

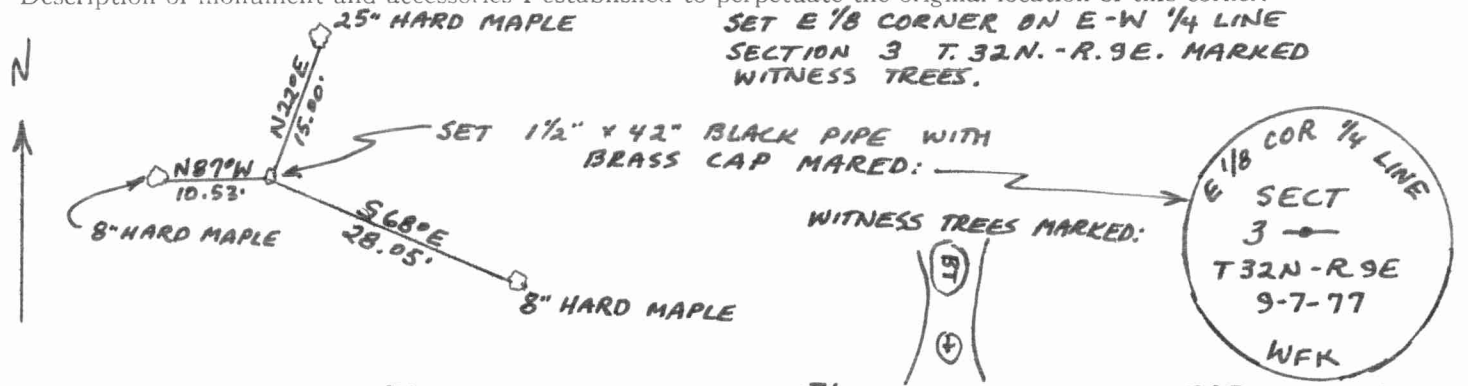
Description of corner evidence found:

CORNER ESTABLISHED BY OWENS-ILLINOIS FROM SURVEY RECORDS OF M. HUTCHINSON.



William F. Kelly 8-7-77

Description of monument and accessories I established to perpetuate the original location of this corner.



SET E 1/8 CORNER ON E-W 1/4 LINE SECTION 3 T. 32N. - R. 9E. MARKED WITNESS TREES.

Dated at ELCHO, Wis., this 7TH day of SEPT., 1977.

Signature William F. Kelly Title REGISTERED LAND SURVEYOR Registration No. S1098
 (County Surveyor, Registered Land Surveyor, or other duly authorized official)

Office of Register of Deeds, County of _____, I hereby certify that the within instrument was filed in this office for record on the _____ day of _____, 19____ at _____ o'clock _____ M.

 (Register of Deeds)

By _____ Deputy

FORM 985 H. C. MILLER CO., MILWAUKEE