

CERTIFIED LAND CORNER RESTORATION

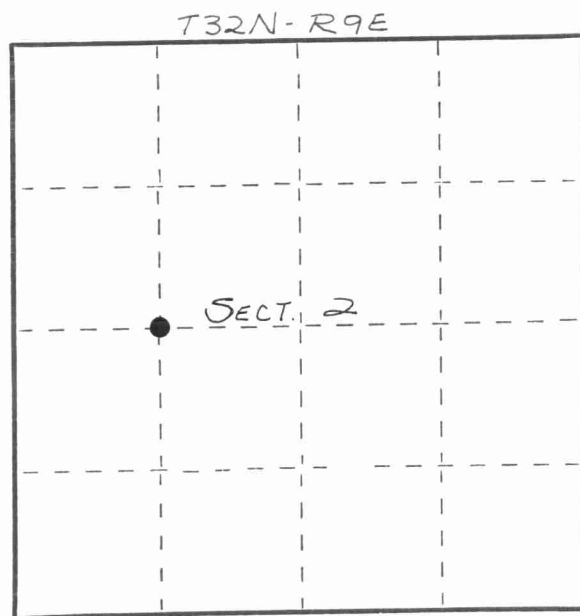
Index No. C-18

State of Wisconsin }  
County of LANGLADE } ss.

I WILLIAM F. KELLY, do hereby certify that on the 28th day of OCTOBER, 1982, I found evidence of the W. 1/4 corner of the E-W 1/4 LINE, SECT. 2 Township 32 North, Range 9 EAST, Fourth Principal Meridian, as described hereon; and that from this evidence I established a new monument and accessories as described hereon to perpetuate the original location of this corner.

Resident witnesses:

.....  
.....  
.....



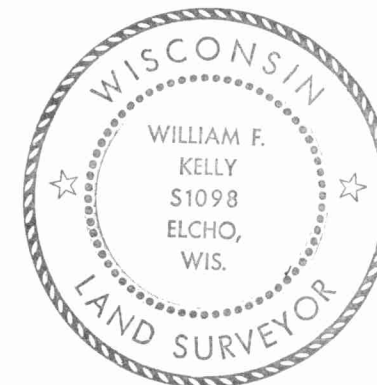
○ = Corner monument restored.

History of original corner establishment:

ORIGINAL CORNER NOT ESTABLISHED DURING ORIGINAL GOV'T SURVEY.

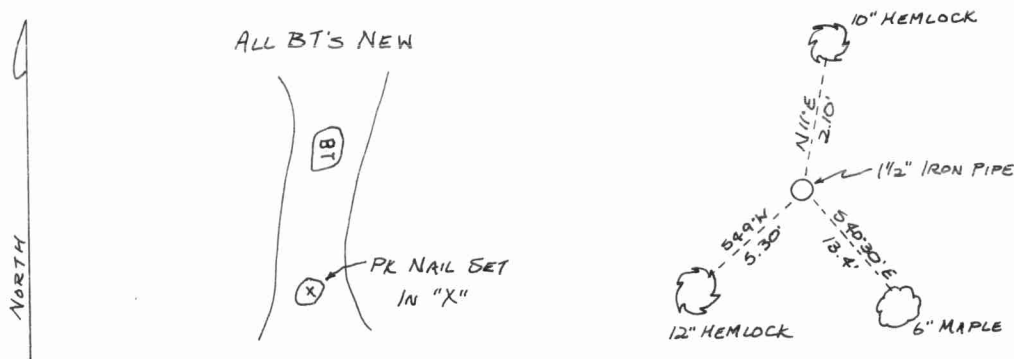
Description of corner evidence found:

COR. EST. FROM Q.T. CONTROL SURVEY OF SECT 2 T 32N R 9E



William F. Kelly  
12-17-82

Description of monument and accessories I established to perpetuate the original location of this corner.



Dated at ELCHO, Wis., this 28th day of OCTOBER, 1982

Signature William F. Kelly Title COUNTY SURVEYOR Registration No. 1098  
(County Surveyor, Registered Land Surveyor, or other duly authorized official)

Office of Register of Deeds, County of \_\_\_\_\_, I hereby certify that the within instrument was filed in this office for record on the \_\_\_\_\_ day of \_\_\_\_\_, 19\_\_\_\_ at \_\_\_\_\_ o'clock \_\_\_\_\_ M.

(Register of Deeds)

By \_\_\_\_\_ Deputy