

CERTIFIED LAND CORNER RESTORATION

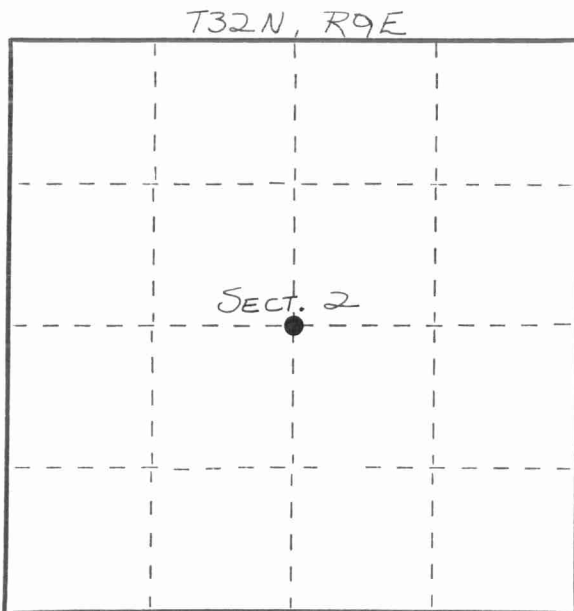
Index No. C-19

State of Wisconsin } ss.
County of LANGLADE

I WILLIAM F. KELLY, do hereby certify that on the 10th day of Nov., 1982, I found evidence of the CENTER corner of SECTION 2 Township 32, North, Range 9 EAST, Fourth Principal Meridian, as described hereon; and that from this evidence I established a new monument and accessories as described hereon to perpetuate the original location of this corner.

Resident witnesses:

.....
.....
.....



○ = Corner monument restored.

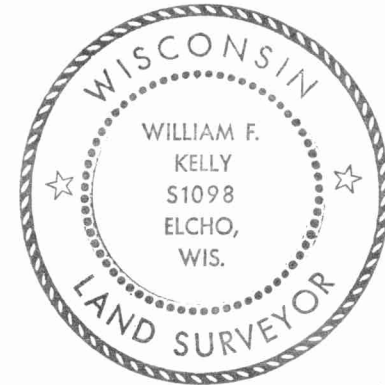
History of original corner establishment:

CORNER NOT ESTABLISHED DURING ORIGINAL SURVEY.

Description of corner evidence found:

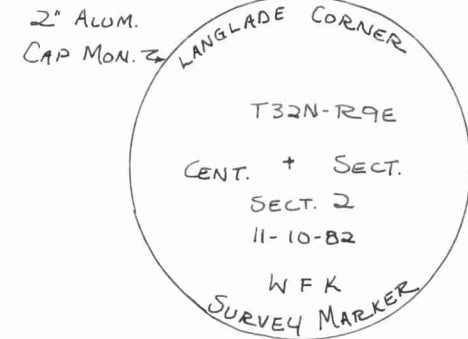
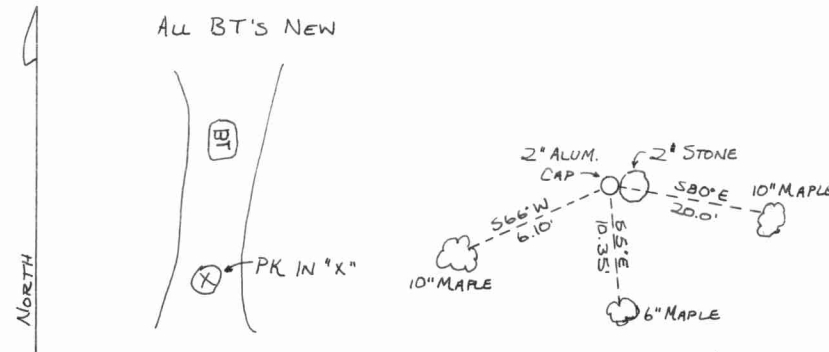
SET A 2" x 42" ALUMINUM CAP MONUMENT. MARKED 3 BT'S.

COR SET AT INTERSECTION OF E-W & N-S 1/4 LINES FROM O.I. CONTROL SURVEY



William F. Kelly

Description of monument and accessories I established to perpetuate the original location of this corner.



Dated at ELCHO, Wis., this 10th day of NOVEMBER, 1982.

Signature William F. Kelly Title COUNTY SURVEYOR Registration No. 1098
(County Surveyor, Registered Land Surveyor, or other duly authorized official)

Office of Register of Deeds, County of, I hereby certify that the within instrument was filed in this office for record on the day of, 19..... at o'clock M.

(Register of Deeds)

By Deputy