

4320902 2000

U.S. PUBLIC LAND SURVEY MONUMENT RECORD

(Prepared and as required by S. A-E 7.08 WI Administrative Code)

The EAST 1/4 corner of Section 2, T. 32 N., R. 9 E., Langlade County, WI
Corner was (check all that apply)

- Restored through acceptance of an obliterated evidence location.
- Restored through acceptance of a found perpetuated location.
- Determined to be lost and re-established through proportionate methods. (show bearings and distances to PLSS corners used for proportioning.)
- Restored/recovered/re-established in a location that differs from a previously established position. (Show difference in plan view below.)
- Check here if additional information is shown on the reverse side of this form.

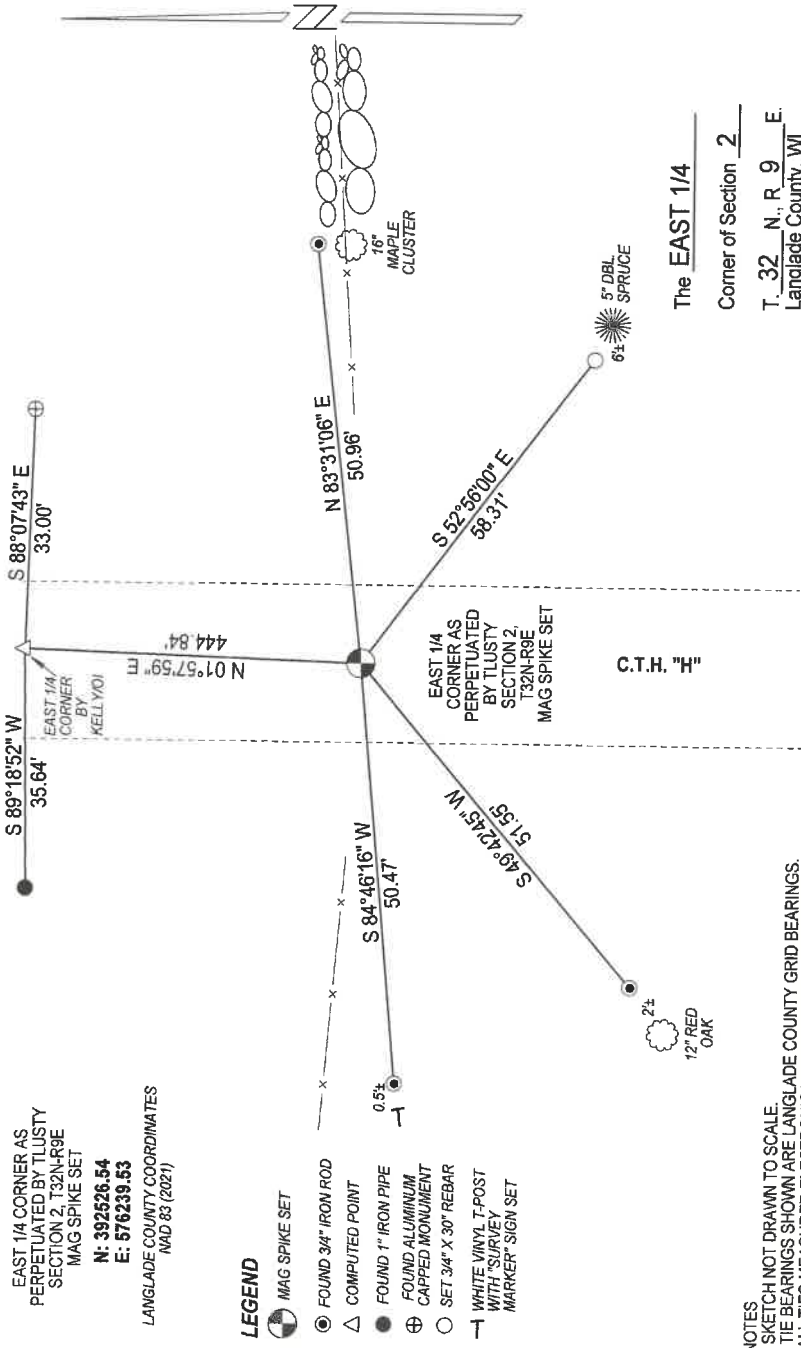
Describe record evidence, recovered physical evidence, occupational evidence, testimonial evidence, and all other evidence considered in the recovery/restoration of the corner.

See previous corner forms, and survey maps for complete history of this corner. Multiple locations of this corner have been used. For purposes of this tie sheet, I have tied out the corner as perpetuated by Thusty, and referenced the corner by Kelly/Oi.

Physical description of the monument set:

I set a mag spike at the corner location as perpetuated by Thusty and tied it out as shown below.

Describe the accessories used to perpetuate the location of the corner. Include a plan view drawing and indicate accessories found/set. Describe measuring point on bearing trees. Show any topographic features that would aid in future recovery of the corner.



NOTES
-SKETCH NOT DRAWN TO SCALE
-TIE BEARINGS SHOWN ARE LANGLADE COUNTY GRID BEARINGS.
-ALL TIES MEASURED ELECTRONICALLY WITH TOTAL STATION.

SURVEYORS SEAL



I, Michael J. Hoffman, certify that the corner location shown on this record was determined by me or under my direction and control and that this U.S. Public Land Survey Monument Record is correct and complete to the best of my knowledge and belief.

Michael J. Hoffman Signature
12/12/2022 Date



○ = Location of corner

U.S. PUBLIC LAND SURVEY MONUMENT RECORD

(Prepared and as required by S. A-E 7.08 WI Administrative Code)

The EAST 1/4 corner of Section 2, T. 32 N., R. 9 E., Langlade County, WI

Corner was: (check all that apply)

- Restored through acceptance of an obliterated evidence location.
- Restored through acceptance of a found perpetuated location.
- Determined to be lost and re-established through proportionate methods.
(Show bearings and distances to PLSS corners used for proportioning.)
- Restored/recovered/reestablished in a location that differs from a previously established position. (Show difference in plan view below.)

3209022000

- Check here if additional information is shown on the reverse side of this form.

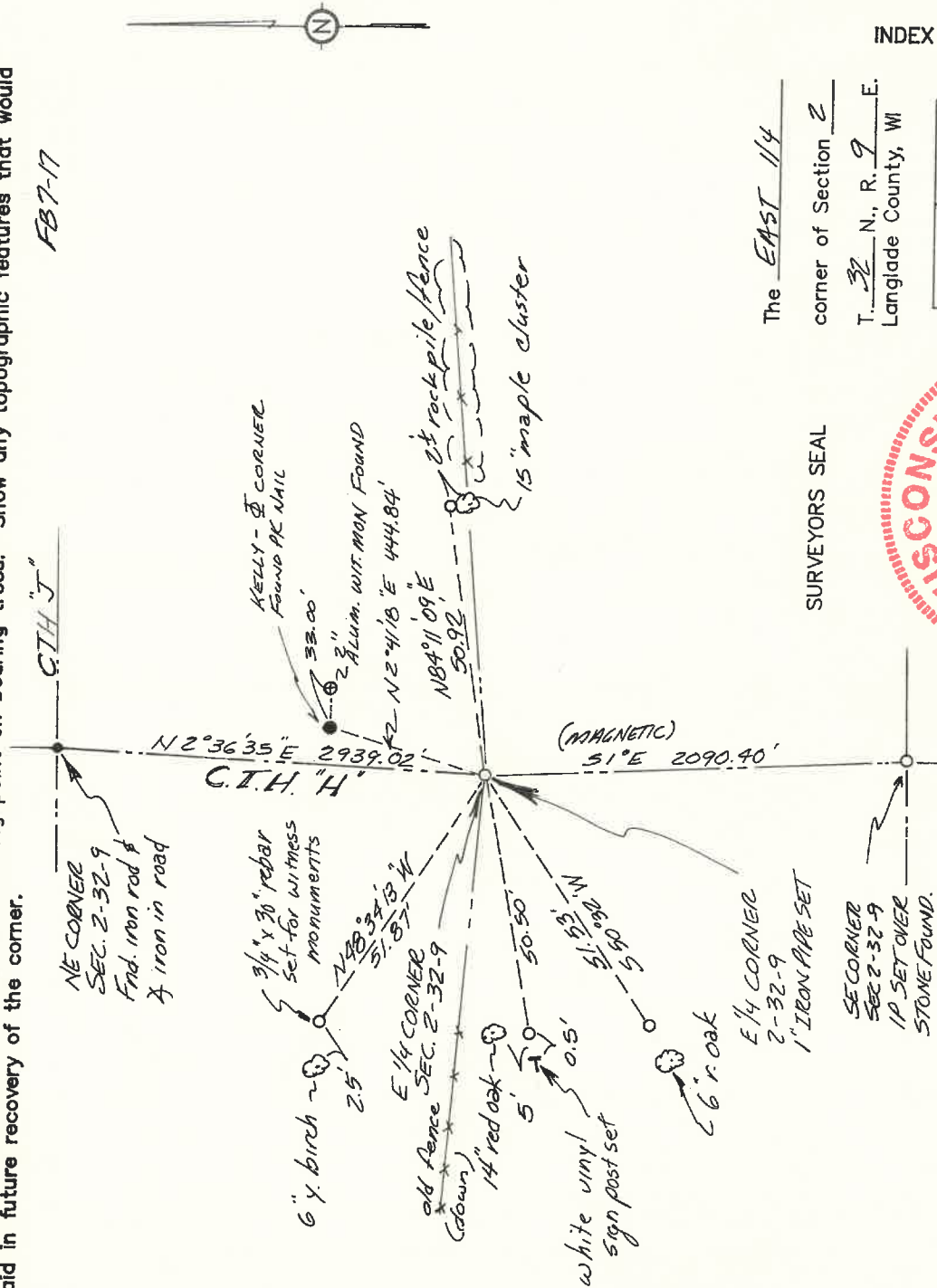
Describe record evidence, recovered physical evidence, occupational evidence, testimonial evidence and all other evidence considered in the recovery/restoration of the corner.

The original corner was established in 1860 by Hiram C. Fellows. Original BT's: birch, 8", N48°E, 4 lks., and a hemlock, 12", S21°W, 9 lks. In 1982, W.F. Kelly said "No evidence of original corner found. Corner established from O-I control survey and occupancy of land". In 1982, William Stuth surveyed land in Section 2 for Owens-Illinois and indicated on his map that the "exterior boundary of this section is based on early 1900 M. Hutchinson surveys in this area and assistance from Wm. F. Kelly, County Surveyor." 06/11/96 D. Tlusty, M. Kielcheski, dug with county backhoe at CL "H" and fences E-W. Found no remaining physical evidence. 10/29/97 D. Tlusty accepted centerline of CTH "H", at its' bend point, and inline with old fences East & West, as the best evidence of the corner. This location fits occupation in the area. I perpetuate this location as described below.

Physical description of the monument set:

10/29/97 D. Tlusty, B. Markowski, for this corner, set pipe with 1" x 15" iron pipe with 2" aluminum cap flush with road.

Describe the accessories used to perpetuate the location of the corner. Include a plan view drawing and indicate accessories found/set. Describe measuring point on bearing trees. Show any topographic features that would aid in future recovery of the corner.



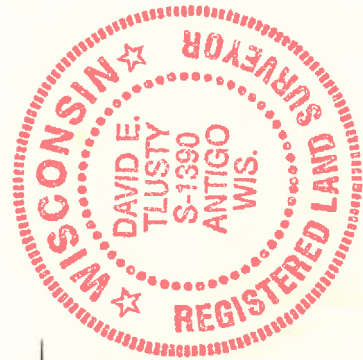
FB7-17

I, David E. Tlusty, Langlade County Surveyor, certify that the corner location shown on this record was determined by me or under my direction and control and that this U.S. Public Land Survey Monument Record is correct and complete to the best of my knowledge and belief.

David E. Tlusty 11/3/97 Date

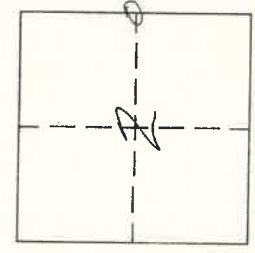
Signature

SURVEYORS SEAL



The EAST 1/4 corner of Section 2
T. 32 N., R. 9 E.
Langlade County, WI

INDEX No. 120



O = Location of corner

CERTIFIED LAND CORNER RESTORATION

Index No. C-21

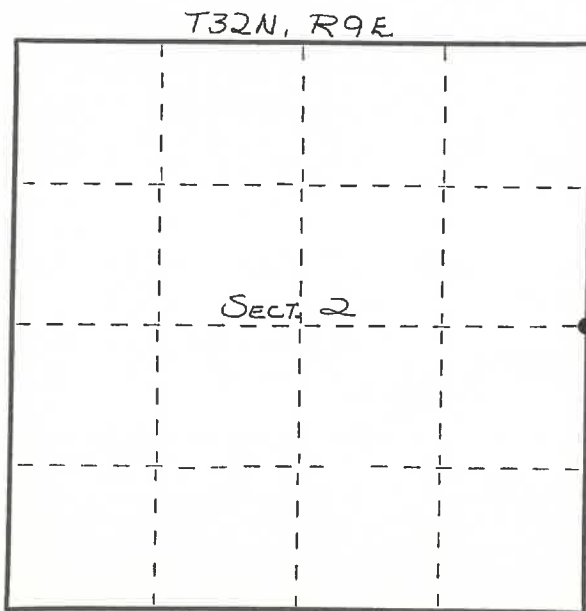
State of Wisconsin }
 County of LANGLADE } ss.

I WILLIAM F. KELLY, do hereby certify that on the 10th day of NOVEMBER, 1982, I found evidence of the E. 1/4 corner of SECTION 2 Township 32, North, Range 9 EAST, Fourth Principal Meridian, as described hereon; and that from this evidence I established a new monument and accessories as described hereon to perpetuate the original location of this corner.

Resident witnesses:

.....

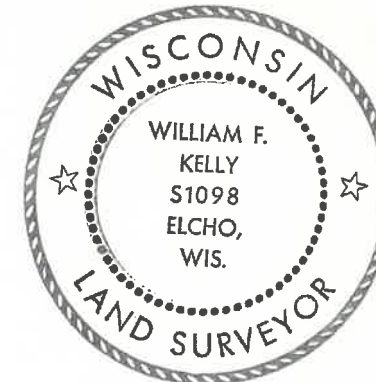
FORM 985 H. C. MILLER CO., MILWAUKEE



○ = Corner monument restored.

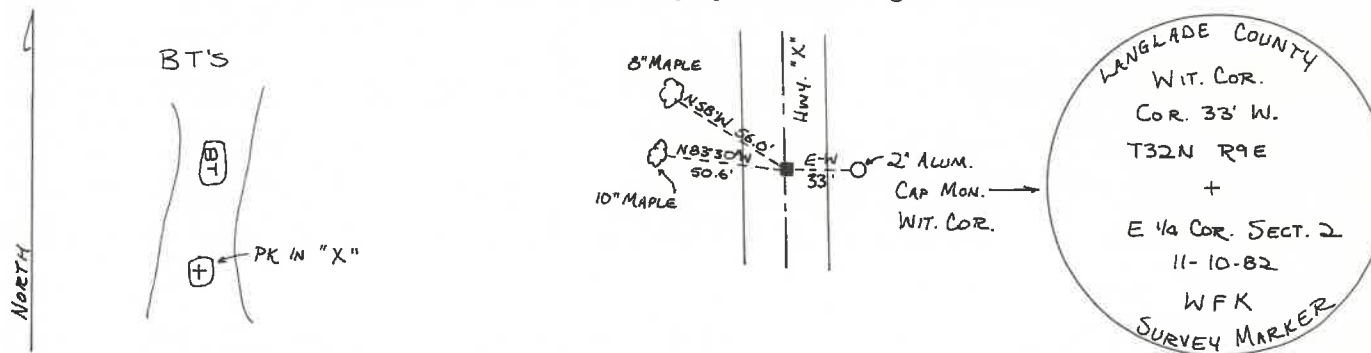
History of original corner establishment:
ORIGINAL CORNER ESTABLISHED BY
HIRAM C. FELLOWS IN SEPT. 1860

Description of corner evidence found:
NO EVIDENCE OF ORIGINAL CORNER FOUND.
CORNER ESTABLISHED FROM O.I. CONTROL
SURVEY AND OCCUPANCY OF LAND.



William F. Kelly

SET R.R. IN CENTER OF HWY. "X" FOR CORNER.
SET A 2"x42" ALUMINUM CAP MONUMENT, WITNESS CORNER.
 Description of monument and accessories I established to perpetuate the original location of this corner.



Dated at ELCHO, Wis., this 10th day of NOVEMBER, 1982.

Signature William F. Kelly Title COUNTY SURVEYOR Registration No. 1098
 (County Surveyor, Registered Land Surveyor, or other duly authorized official)

Office of Register of Deeds, County of....., I hereby certify that the within instrument was filed in this office for record on the.....day of....., 19..... at.....o'clock..... M.

.....
 (Register of Deeds)

By.....Deputy