

CERTIFIED LAND CORNER RESTORATION

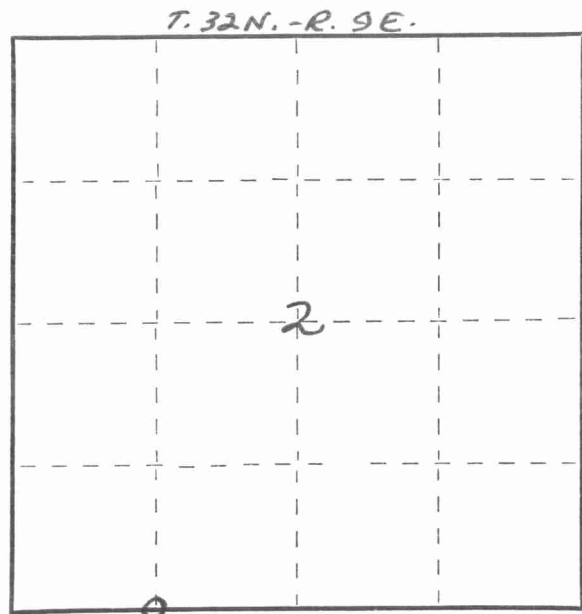
Index No. E-18

State of Wisconsin }  
 County of LANGLADE } ss.

I WILLIAM F. KELLY, do hereby certify that on the 8<sup>TH</sup> day of SEPTEMBER, 19 77, I found evidence of the WEST 1/8 corner of SECTION 2 Township 32, North, Range 9E, Fourth Principal Meridian, as described hereon; and that from this evidence I established a new monument and accessories as described hereon to perpetuate the original location of this corner.

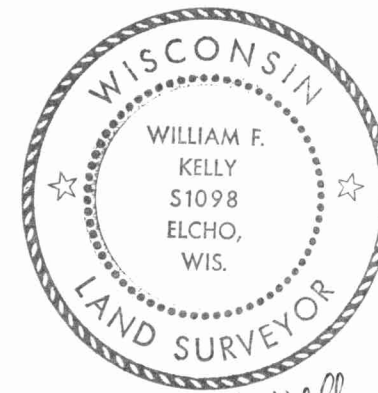
Resident witnesses:

.....  
 .....



○ = Corner monument restored.

History of original corner establishment:

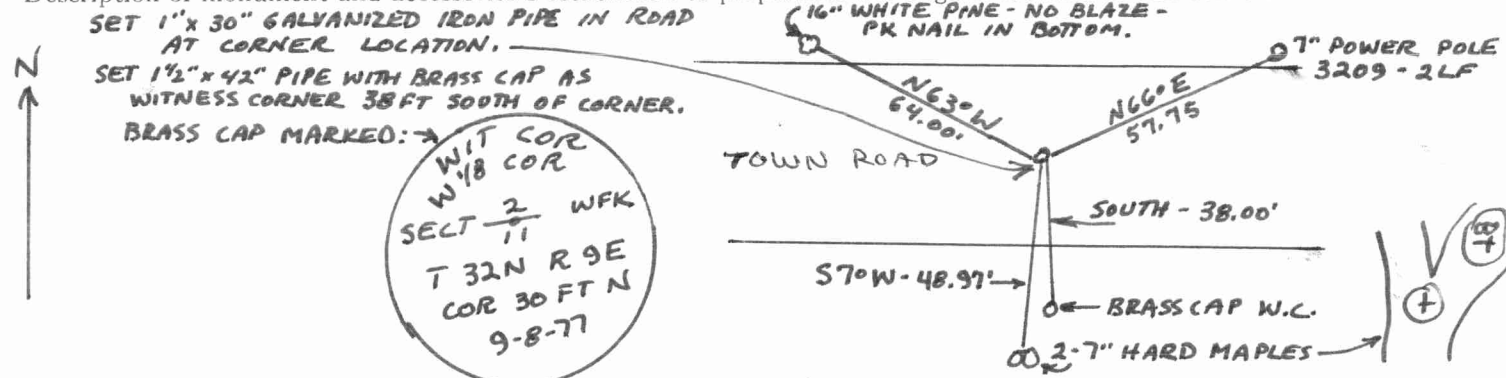


*William F. Kelly 9-8-77*

Description of corner evidence found:

**CORNER ESTABLISHED BY OWENS ILLINOIS FROM SURVEY RECORDS OF M. HUTCHINSON.**

Description of monument and accessories I established to perpetuate the original location of this corner.



Dated at ELCHO, Wis., this 8<sup>TH</sup> day of SEPTEMBER, 1977

Signature William F. Kelly Title REGISTERED LAND SURVEYOR Registration No. S1098  
 (County Surveyor, Registered Land Surveyor, or other duly authorized official)

Office of Register of Deeds, County of ....., I hereby certify that the within instrument was filed in this office for record on the ..... day of ....., 19..... at ..... o'clock ..... M.

.....  
 (Register of Deeds)  
 By ..... Deputy

FORM 983 P. C. MILLER CO., MILWAUKEE