

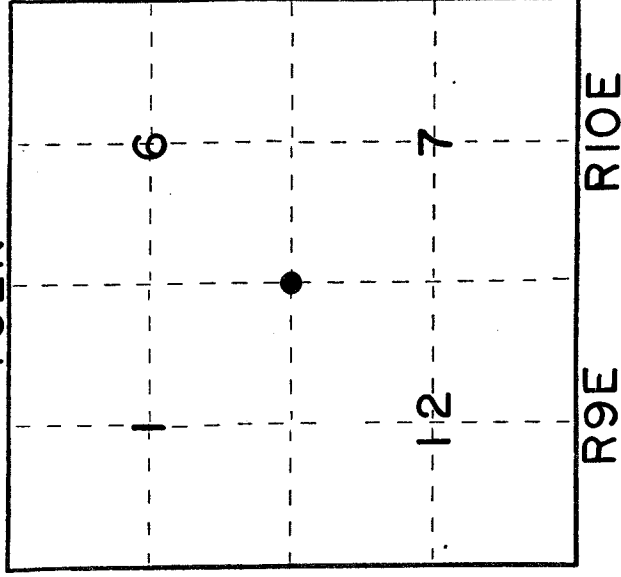
U. S. PUBLIC LAND SURVEY MONUMENT RECORD

I N S T R U C T I O N S :

This record shall show the location of the corner and shall include all of the following nine elements (a through i).

- (a) Identify the corner by reference to the U.S. public land survey system.
- = Corner monument restored.

T 32N



Northwest Section Corner of Section 7
Township 32 North, Range 9 & 10 East
Langlade County, Wisconsin

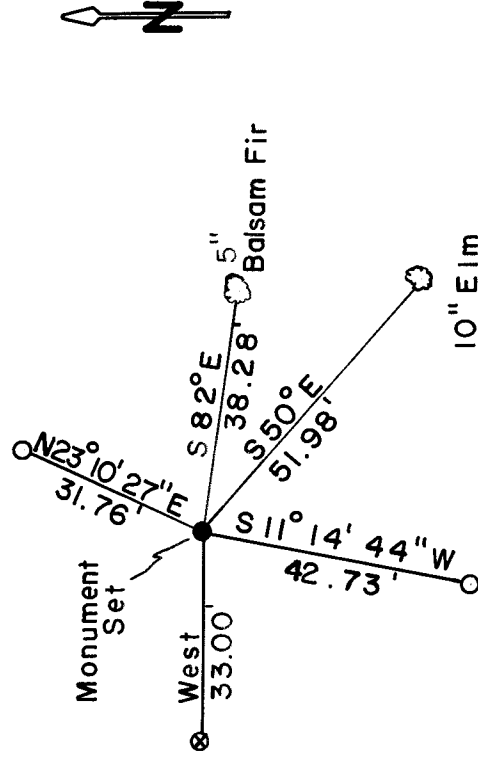
- (b) Describe any record evidence, monument evidence, occupational evidence, evidential evidence, testimonial evidence or any other material evidence you considered, and whether the monument was found or placed.
After extensive record and field research to locate or retrace the position of above section corner, accepted the position established in 1965 by George Drivas, Ripco Surveyor, marked by a reference monument 2" iron pipe with 3" alloy cap stamped to identify corner to be 50 lks east that falls in the centerline of old abandoned town road. Drivas' subdivided Section 12, T32N-R9E using this position. He set sixteenth corners that have been accepted for the past thirty years. All efforts were executed trying to retrace B.F. Dorrs' survey of Section 6 in 1895 with no success.

There are no written statements in Drivas' field notes to why he accepted this position, only that he accepted the best available evidence at the time.

- (c) In the plan view drawing below, provide reference ties to at least 4 witness monuments, or, if the location is within a municipality, to at least 2 witness monuments. (Witness monuments shall be made of concrete, natural stone, iron or other equally durable material.)
Describe witness monuments.

x = set two 3/4" x 30" Rebars ● = reference monument found

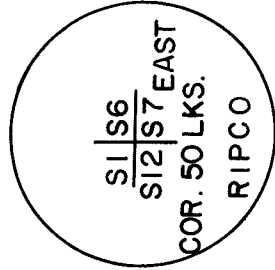
- (d) Show a plan view drawing depicting the relevant monuments and reference ties which is sufficient in detail to enable accurate relocation of the corner monument if the corner monument is disturbed. Indicate north.



3/4" x 30" Re-bar
set for corner

● Buried 3"

Reference Monument



○ Set two 3/4" x 30" Re-bar

○ Marked bearing tree

Measured to nail in side of tree.

E-1
32-10

(e) Describe any material discrepancy between the location of the corner as restored or reestablished and the location of that corner as previously restored or reestablished by distance and direction. Show the discrepancy on the plan view drawing under (d), above. Show the distances between the corner as previously restored or reestablished and (1) the corner as restored or reestablished, and (2) to at least 2 of the witness monuments shown on the drawing in (d), above.

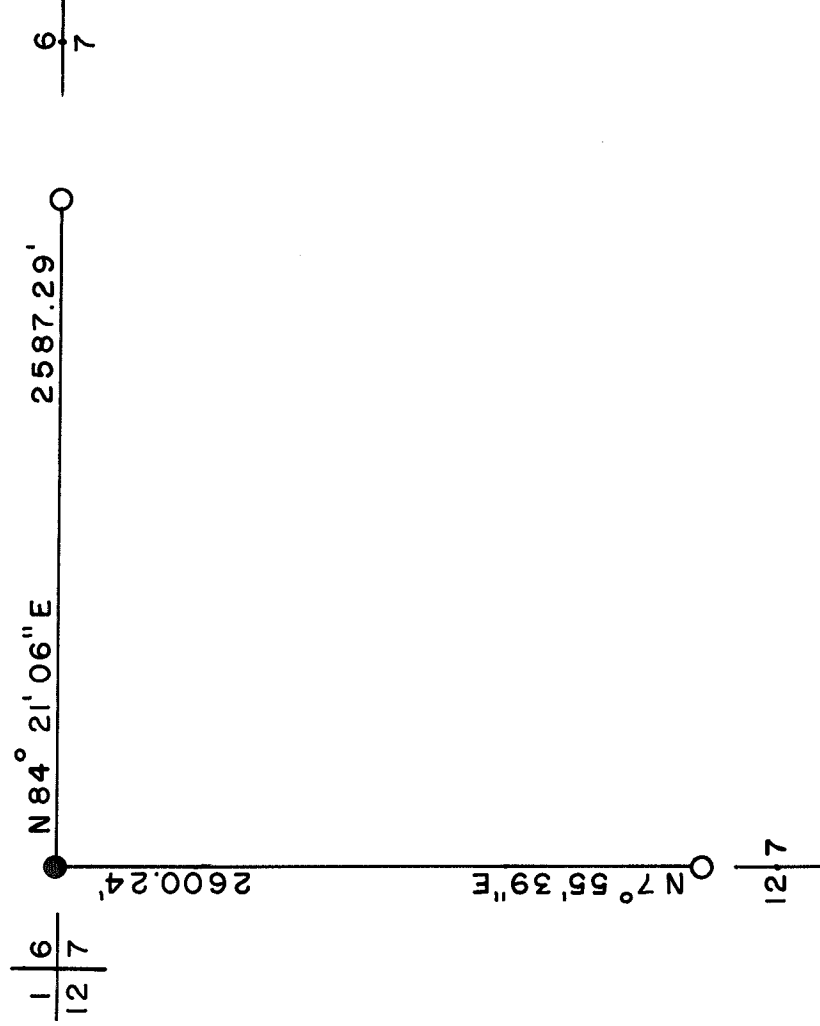
Drivas' recorded distance from northwest section corner to west quarter corner of Section 7 was 2599.94'. Resurvey of the same 2600.24'.

Set a 3/4" x 30" Rebar 50 lks east of recovered reference monument in the centerline of old road and 3" below surface.

(f) Was the corner restored through acceptance of (1) an obliterated evidence location, or, (2) a found perpetuated location?

Perpetuated location

(g&h) Was the corner reestablished through lost corner proportionate methods? If so, show the method, including the directions and distances to other public land survey corners used as evidence or used for proportioning in determining the corner location?



(i) I, Glen Barker (type or print name) certify that the corner location shown on this record was determined by me or under my direction and control and that this U.S. Public Land Survey Monument Record is correct and complete to the best of my knowledge and belief.

Glen Barker Date 5/6/95

Signature

Date

