

CERTIFIED LAND CORNER RESTORATION

Index No. W-1

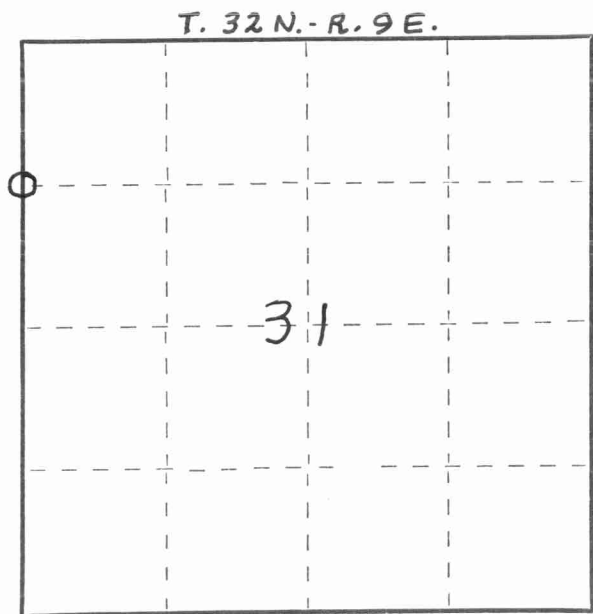
State of Wisconsin }
 County of LANGLADE } ss.

I WILLIAM F. KELLY, do hereby certify that on the 26TH day of NOVEMBER, 1975, I found evidence of the N 1/16 corner of SECTION 31 & 36 Township 32N, North, Range 8E & 9E, Fourth Principal Meridian, as described hereon; and that from this evidence I established a new monument and accessories as described hereon to perpetuate the original location of this corner.

Resident witnesses:

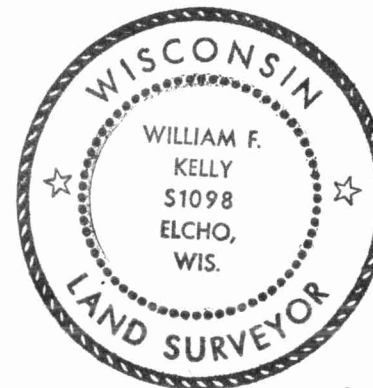
.....

FORM 985 H. C. MILLER CO., MILWAUKEE



○ = Corner monument restored.

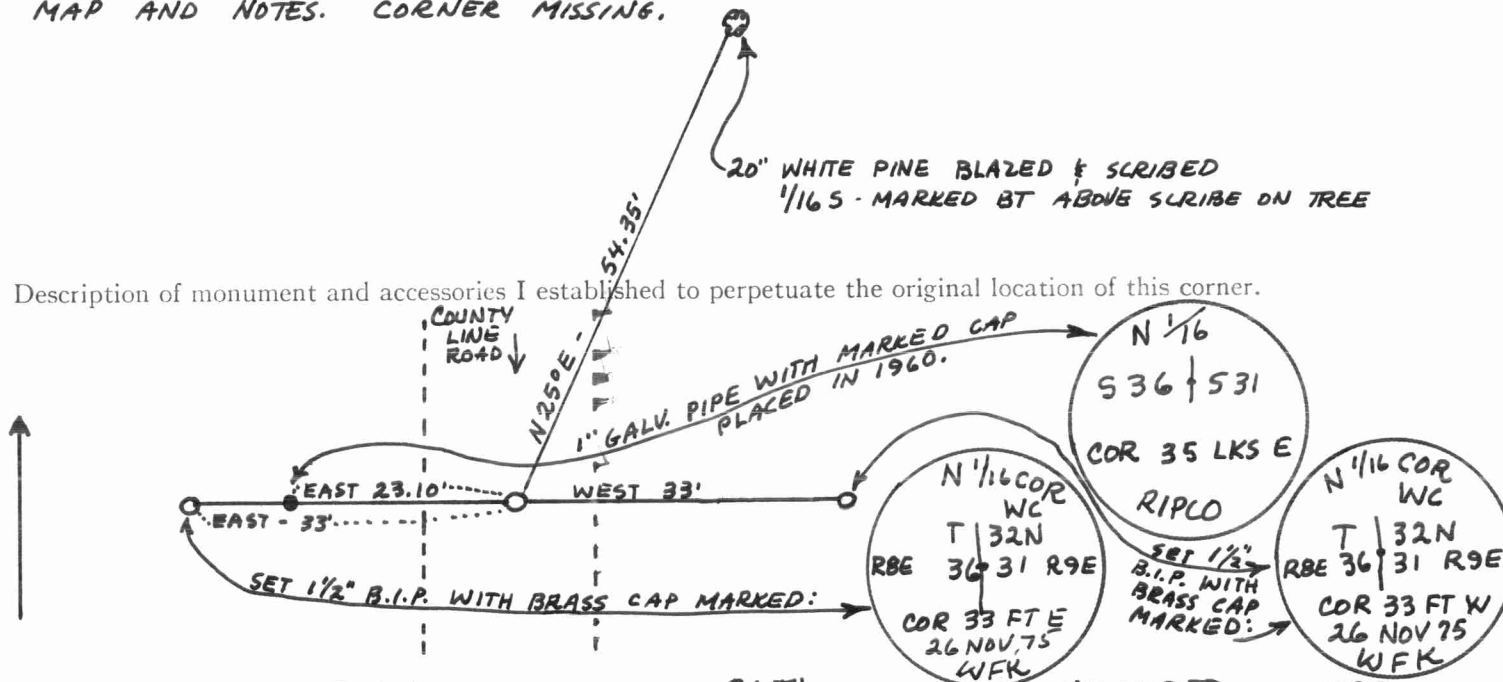
History of original corner establishment:



William F. Kelly

Description of corner evidence found:

LOCATED WIT. COR. AND BLAZED TREE SCRIBED 1/16 S FROM 1960 SURVEY MAP AND NOTES. CORNER MISSING.



Description of monument and accessories I established to perpetuate the original location of this corner.

Dated at ELCHO, Wis., this 26TH day of NOVEMBER, 1975.

Signature William F. Kelly Title REGISTERED LAND SURVEYOR Registration No. 51098
 (County Surveyor, Registered Land Surveyor, or other duly authorized official)

Office of Register of Deeds, County of, I hereby certify that the within instrument was filed in this office for record on the day of, 19..... at o'clock M.

(Register of Deeds)

By Deputy